

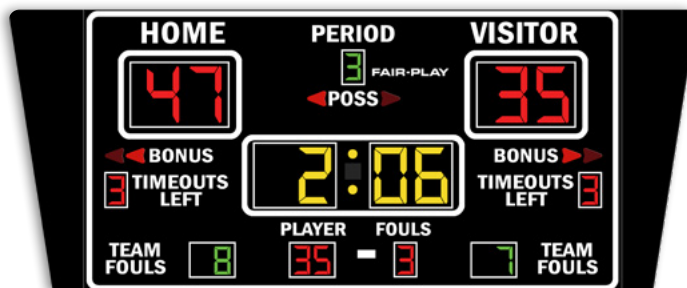
CAPTIONS (H" x W")

HOME	4" x 18"
VISITOR	4" x 23"
PERIOD	3" x 18"
BONUS	2.5" x 13"
POSS	2.5" x 10"
FOULS (Personal)	2.25" x 12"
PLAYER	2.25" x 13"
TIMEOUTS	2.5" x 21"
LEFT (TOL)	2.5" x 10"
TEAM FOULS	6" x 13"

DIGIT SIZES (H")

Team Scores	12"
Game Clock	12"
Period	6"
Personal Fouls	6"
Player Number	6"
Team Fouls	6"
Timeouts Left	6"
Colon Diameter	1.5"

MODEL: BB-1837-4S



DIMENSIONS

Height	Length	Depth	Weight
5'-0"	12'-2"	N/A	1,500 lbs.

STANDARD EQUIPMENT

- 4-sided scbd: 2-faces scbd, 2-faces blank
- Energy efficient LED designs
- Three distinct LED digit colors to visually organize critical game information
- Heavy-duty, vibrating horn (103 dB)
- 4-level control console display brightness adjustment
- 5-year limited warranty
- Easy access built-in service points
- Quality engineered water resistant aluminum
- Complete, secure and durable scoreboard mounting
- Built-in lightning suppressor (for standard data direct wire only)
- Request a free project design rendering
- Help Desk Support
- USA Factory authorized national and local sales, service and installation

OPTIONAL EQUIPMENT

- Full-color electronic message displays
- Integrated scoring and display systems
- Illuminated, non-illuminated identification and sponsorship signage
- Personalized vinyl home team name
- Scoreboard caption color (other than white)
- Custom, unique signage options
- Scoreboard control carrying case
- Truss and decorative steel systems
- Power lightning protector or protective net
- Court side tables options in 8ft, 10ft or 7.7ft long configured with front BB scoreboard
- Synchronized locker room game / time of day clocks

Please see Color Chart PDF for all scoreboard color options.

UV resistant custom paint & vinyl trim colors available.

ELECTRICAL

Voltage	Hertz	Watts	AMPS	Phase	Wiring	Circuits Required	Safety Listing	Scoreboard Display	Control Console
120 VAC	60	407	4	1	2-Wire + ground	1	ETL/CETL	-22° to 131° F -30° to 55° C	32° to 131° F 0° to 55° C

OPERATING TEMPERATURES

All weights and measures are approximate. To confirm specifications please contact your local Fair-Play representative.

For applicable models, consult with a sales representative on the following:

- Choice of Fair-Play's scorekeeper approved score systems
- Electronic Team Names
- Rear-illuminated scoreboard captions or scoreboard sport-conversion captions (electronic)
- Changeable scoreboard game captions — electronic available, operated via control
- Integrated, second operator statistics control