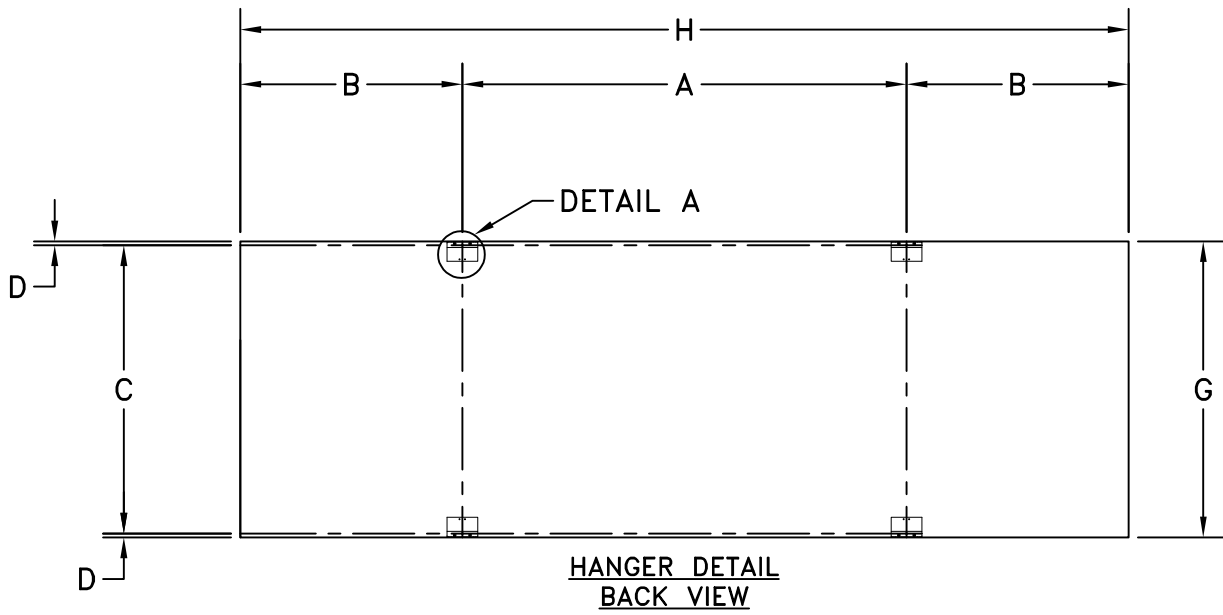
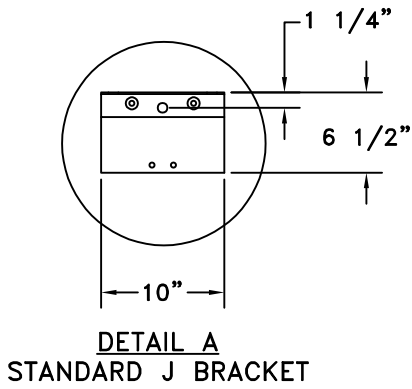
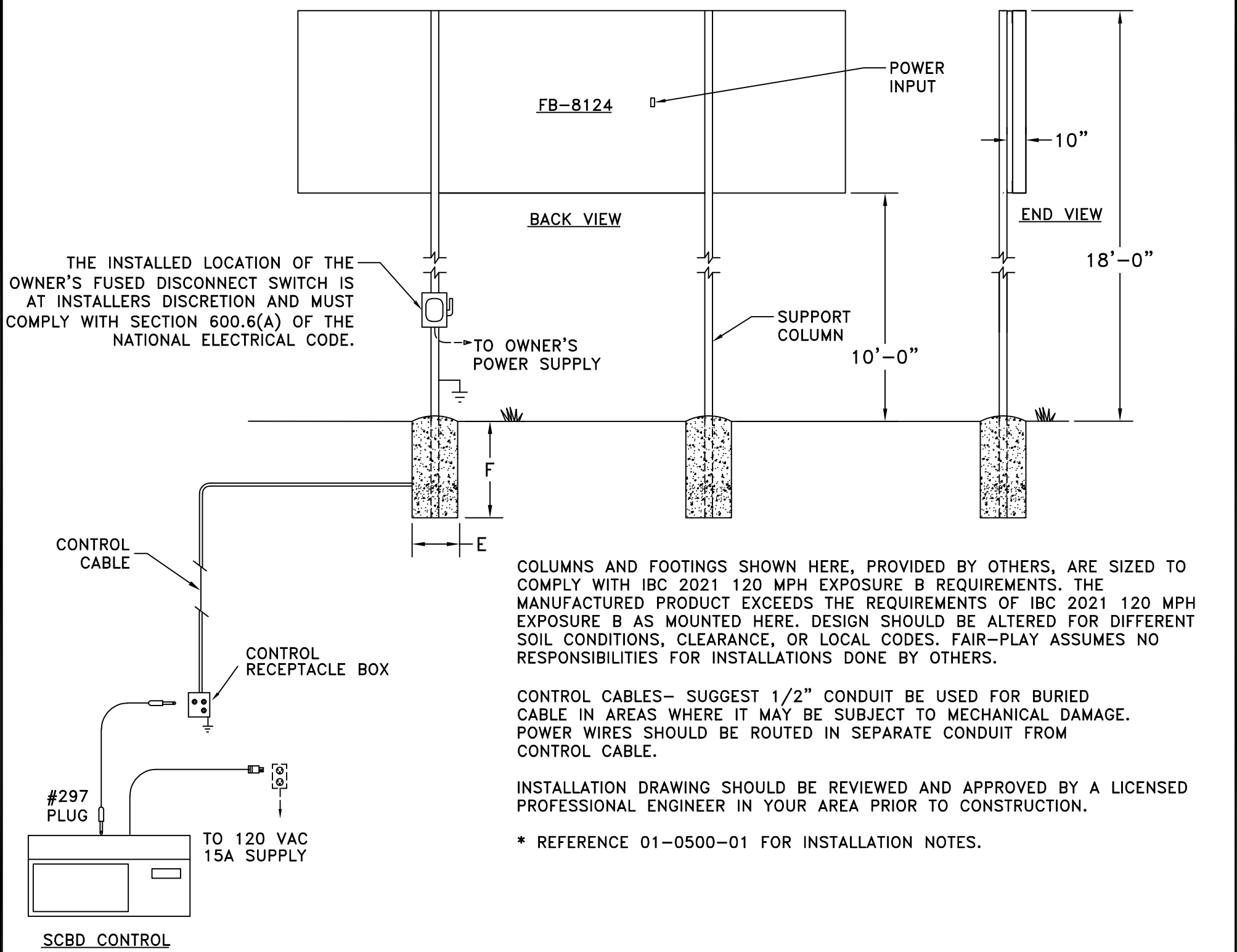


A	B	C	D	E	F	G	H	COLUMNS	POWER
12'-0"	6'-0"	7'-9 1/2"	1 1/4"	2'-6"	11'-6"	8'-0"	24'-0"	W12 X 35	REFERENCE 01-8124-126-1

DIMENSIONS



OR		ORIGINAL RELEASE		06-13-24	BEW
REV.#		CHANGE		DATE	BY

CUSTOMER APPROVAL:		MY SIGNATURE BELOW SIGNIFIES MY APPROVAL TO PROCEED WITH THE DESIGN WORK SPECIFIED HEREIN AND ACKNOWLEDGEMENT THAT I HAVE RECEIVED AND READ THE INSTALLATION SPECIFICATIONS CONTAINED IN FAIR-PLAY DOCUMENT NO. 01-0500-01. CONSULT YOUR FAIR-PLAY SALES ASSOCIATE IF YOU SHOULD HAVE ANY QUESTIONS OR REQUIRE ANY CHANGES TO THIS DOCUMENT.	
PROJECT:		SIGNATURE:	
REFERENCE #:		PRINT NAME:	

FAIR-PLAY	THIS DOCUMENT CONTAINS FAIR-PLAY PROPRIETARY INFORMATION. ANY DISCLOSURE, USE OR DUPLICATION OF THE DOCUMENT OR OF ANY INFORMATION CONTAINED THEREIN FOR OTHER THAN THE SPECIFIC PURPOSE FOR WHICH IT WAS DISCLOSED IS EXPRESSLY PROHIBITED, EXCEPT AS MAY BE OTHERWISE AGREED TO IN WRITING. COPYRIGHT 2022.			
	TITLE	DRAWN BY		
	INSTALLATION FOR FB-8124	BEW		
		DATE		
	SCALE	06-13-24	B	MODEL
	3/16"=1'-0"			FB-8124
			DWG. NO.	
			01-8124-126-2	

6110 AVIATOR DRIVE HAZELWOOD, MO 63042	
---	--