

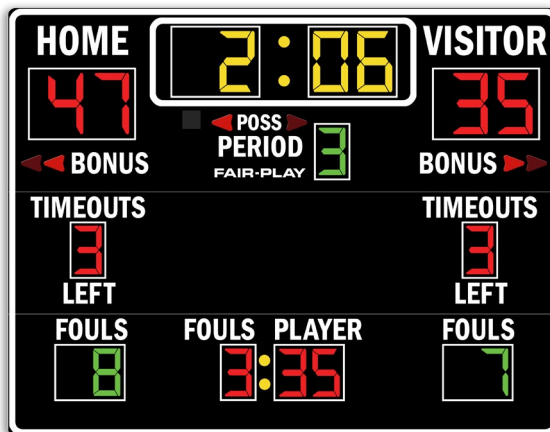
CAPTIONS (H" x W")

| | |
|------------------|----------|
| HOME | 6" x 18" |
| VISITOR | 6" x 25" |
| PERIOD | 4" x 16" |
| BONUS | 4" x 15" |
| POSS | 3" x 9" |
| FOULS (Personal) | 4" x 14" |
| FOULS (Team) | 4" x 14" |
| PLAYER | 4" x 17" |
| TIMEOUTS | 4" x 23" |
| LEFT | 4" x 11" |
| Colon Diameter | 1.5" |

DIGIT SIZES (H")

| | |
|----------------|-----|
| Game Clock | 12" |
| Team Scores | 12" |
| Period | 10" |
| Team Fouls | 10" |
| Personal Fouls | 10" |
| Player Number | 10" |
| Timeouts Left | 10" |

MODEL: BB-1680-4



DIMENSIONS

| Height | Length | Depth | Weight |
|--------|--------|-------|----------|
| 7'-0" | 9'-0" | 4" | 236 lbs. |

STANDARD EQUIPMENT

- Energy efficient LED designs
- Three distinct LED digit colors to visually organize critical game information
- Heavy-duty, vibrating horn (103 dB)
- 4-level control console display brightness adjustment
- 5-year limited warranty
- Easy access built-in service points
- Quality engineered water resistant aluminum
- Complete, secure and durable scoreboard mounting
- Built-in lightning suppressor (for standard data direct wire only)
- Request a free project design rendering
- Help Desk Support
- USA Factory authorized national and local sales, service and installation

OPTIONAL EQUIPMENT

- Full-color electronic message displays
- Integrated scoring and display systems
- Illuminated, non-illuminated identification and sponsorship signage
- Personalized vinyl home team name
- Scoreboard caption color (other than white)
- Custom, unique signage options
- Scoreboard control carrying case
- Truss and decorative steel systems
- Power lightning protector or protective net
- Court side tables options in 8ft, 10ft or 7.7ft long configured with front BB scoreboard
- Synchronized locker room game / time of day clocks

Please see Color Chart PDF for all scoreboard color options.

UV resistant custom paint & vinyl trim colors available.

ELECTRICAL

| Voltage | Hertz | Watts | AMPS | Phase | Wiring | Circuits Required | Safety Listing | Scoreboard Display | Control Console |
|---------|-------|-------|------|-------|-----------------|-------------------|----------------|--------------------|-----------------|
| 120 VAC | 60 | 134 | 1.12 | 1 | 2-Wire + ground | 1 | ETL/CETL | -22° to 131° F | -30° to 55° C |

OPERATING TEMPERATURES

All weights and measures are approximate. To confirm specifications please contact your local Fair-Play representative.

For applicable models, consult with a sales representative on the following:

- Choice of Fair-Play's scorekeeper approved score systems
- Electronic Team Names
- Rear-illuminated scoreboard captions or scoreboard sport-conversion captions (electronic)
- Changeable scoreboard game captions — electronic available, operated via control
- Integrated, second operator statistics control

For orders and questions:
sales@fair-play.com

FAIRPLAY CORPORATION 800.247.0265 • fair-play.com
Over 85 Years of Sports Scoring Experience 6110 Aviator Drive, Hazelwood, MO 63042