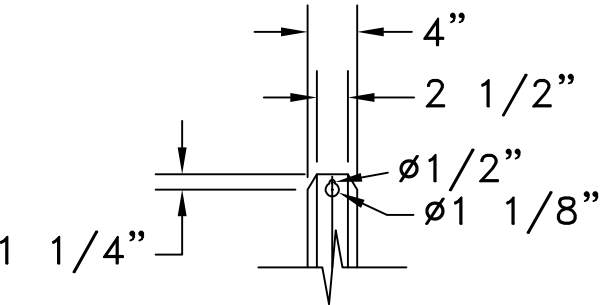


NOTE:
POWER WIRES SHOULD BE ROUTED IN SEPARATE CONDUIT FROM CONTROL CABLE.
SUGGET 1/2" CONDUIT FOR POWER AND CONTROL.

VENTILATION- THE SCOREBOARD & MESSAGE BACK INCORPORATES FANS FOR AIR CIRCULATION. INSTALL SCOREBOARD & MESSAGE SO AIR FLOW IS NOT RESTRICTED.

FAIR-PLAY ASSUMES NO RESPONSIBILITIES FOR INSTALLATIONS DONE BY OTHERS.

* REFERENCE 01-0500-01 FOR INSTALLATION NOTES.



DETAIL A
MOUNTING BRACKET
SCALE 2X

CUSTOMER APPROVAL:		MY SIGNATURE BELOW SIGNIFIES MY APPROVAL TO PROCEED WITH THE DESIGN WORK SPECIFIED HEREIN AND ACKNOWLEDGEMENT THAT I HAVE RECEIVED AND READ THE INSTALLATION SPECIFICATIONS CONTAINED IN FAIR-PLAY DOCUMENT NO. 01-0500-01. CONSULT YOUR FAIR-PLAY SALES ASSOCIATE IF YOU SHOULD HAVE ANY QUESTIONS OR REQUIRE ANY CHANGES TO THIS DOCUMENT.	
PROJECT:	SIGNATURE:	DATE:	
REFERENCE #:	PRINT NAME:		

FAIR-PLAY	THIS DOCUMENT CONTAINS FAIR-PLAY PROPRIETARY INFORMATION. ANY DISCLOSURE, USE OR DUPLICATION OF THE DOCUMENT OR OF ANY INFORMATION CONTAINED THEREIN FOR OTHER THAN THE SPECIFIC PURPOSE FOR WHICH IT WAS DISCLOSED IS EXPRESSLY PROHIBITED, EXCEPT AS MAY BE OTHERWISE AGREED TO IN WRITING. COPYRIGHT 2022.		
	TITLE INSTALLATION FOR VB-1611-4		DRAWN BY BEW
	DATE 06-26-14		MODEL VB-1611-4
	SCALE 3/8"=1'-0"		
DWG. NO. 01-1611-03-2			

A	UPDATED TIEL BLOC FORMAT	01-10-23	BEW
OR	ORIGINAL RELEASE	06-26-14	BEW
REV.#	CHANGE	DATE	BY