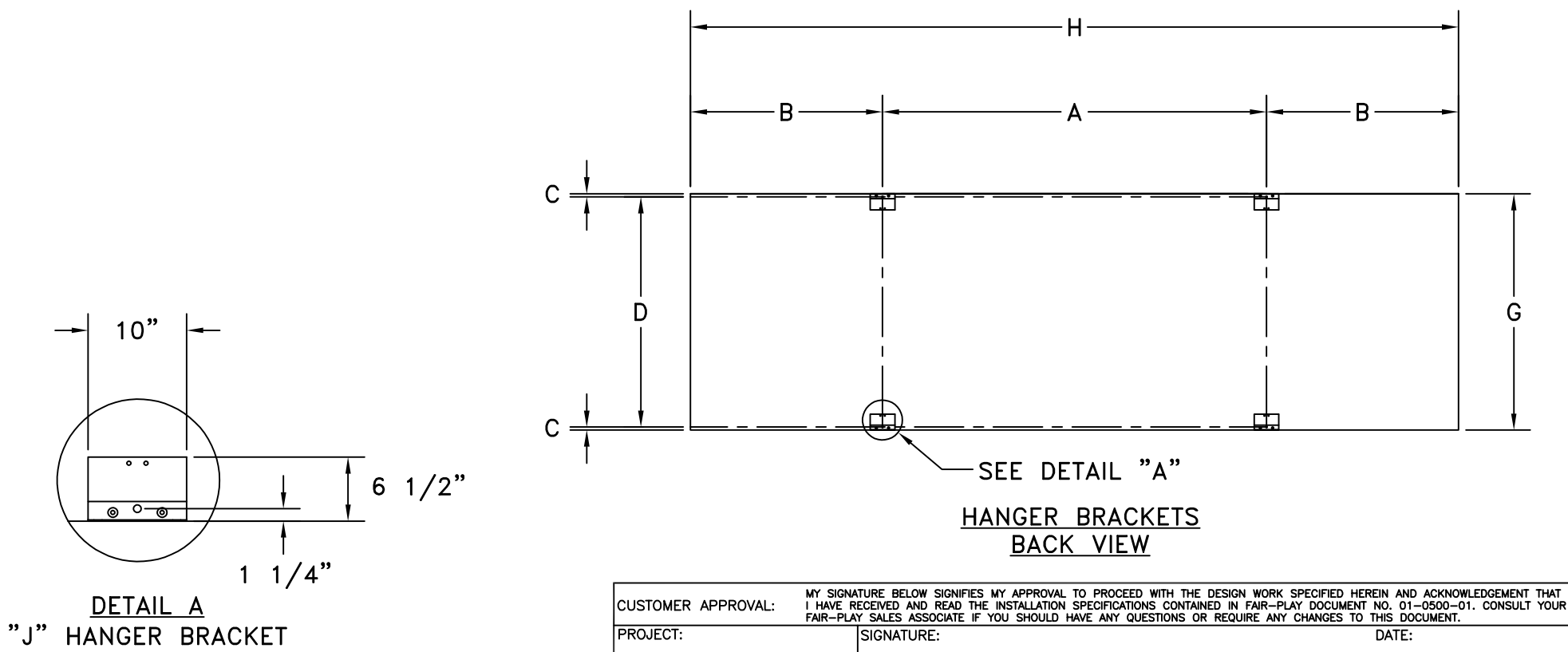
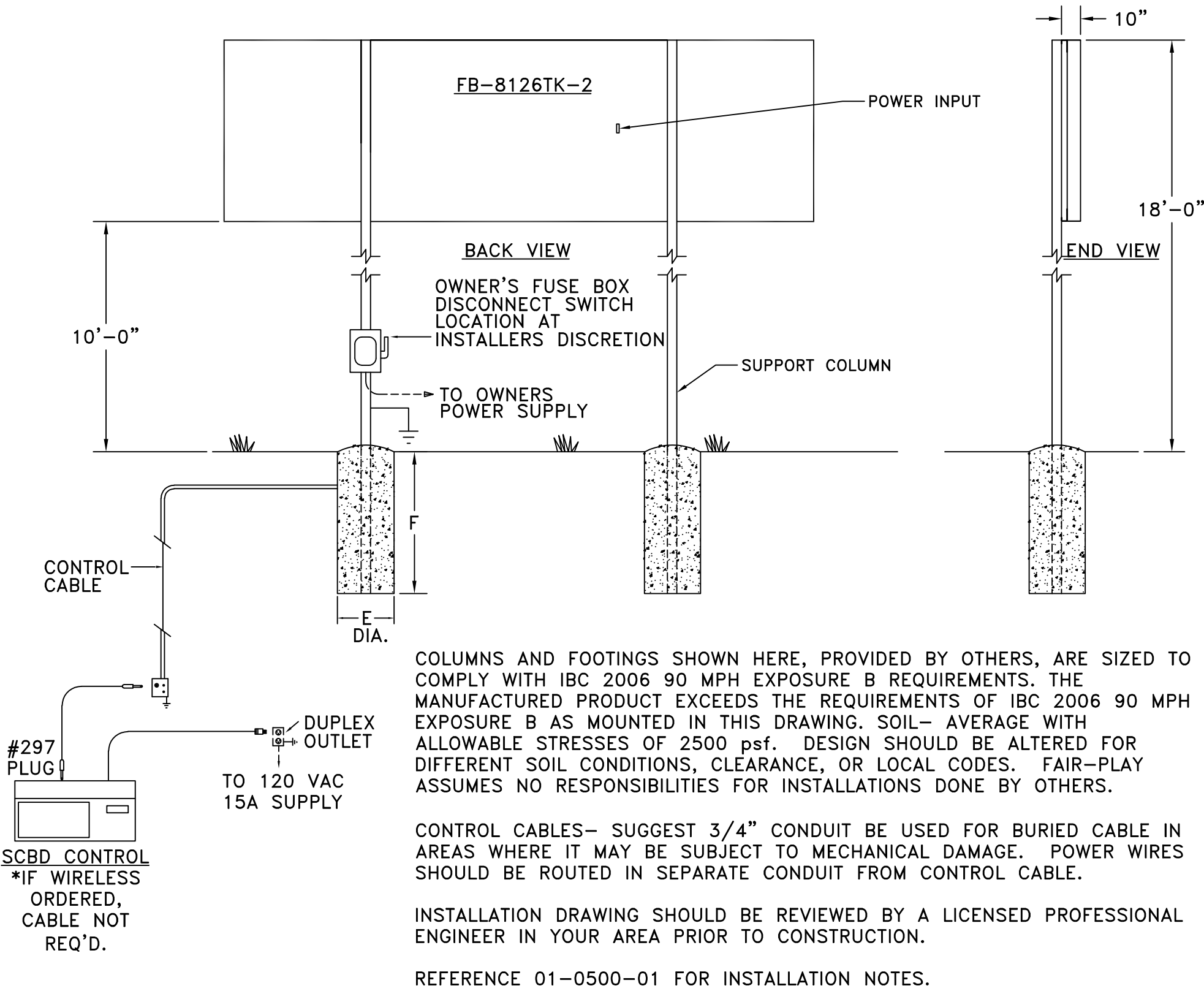


A	B	C	D	E	F	G	H	COLUMNS	POWER
13'-0"	6'-6"	1 1/4"	7'-9 1/2"	3'-0"	9'-6"	8'-0"	26'-0"	W10X26	REFERENCE 01-8126-64-1

DIMENSIONS



A		UPDATED TITLE BLOCK FORMAT		08-15-22	BEW
OR		ORIGINAL RELEASE		06-16-09	RMS
REV.#		CHANGE		DATE	BY

<b>FAIR-PLAY</b>		THIS DOCUMENT CONTAINS FAIR-PLAY PROPRIETARY INFORMATION. ANY DISCLOSURE, USE OR DUPLICATION OF THE DOCUMENT OR OF ANY INFORMATION CONTAINED THEREIN FOR OTHER THAN THE SPECIFIC PURPOSE FOR WHICH IT WAS DISCLOSED IS EXPRESSLY PROHIBITED, EXCEPT AS MAY BE OTHERWISE AGREED TO IN WRITING. COPYRIGHT 2022.	
TITLE INSTALLATION FOR FB-8126TK-2		DRAWN BY RMS DATE 06-16-09 SCALE 3/16"=1'-0"	
6110 AVIATOR DRIVE HAZELWOOD, MO 63042		B MODEL FB-8126TK-2 DWG. NO. 01-8126-64-2	

CUSTOMER APPROVAL:		MY SIGNATURE BELOW SIGNIFIES MY APPROVAL TO PROCEED WITH THE DESIGN WORK SPECIFIED HEREIN AND ACKNOWLEDGEMENT THAT I HAVE RECEIVED AND READ THE INSTALLATION SPECIFICATIONS CONTAINED IN FAIR-PLAY DOCUMENT NO. 01-0500-01. CONSULT YOUR FAIR-PLAY SALES ASSOCIATE IF YOU SHOULD HAVE ANY QUESTIONS OR REQUIRE ANY CHANGES TO THIS DOCUMENT.	
PROJECT:		SIGNATURE:	
REFERENCE #:		DATE:	
		PRINT NAME:	