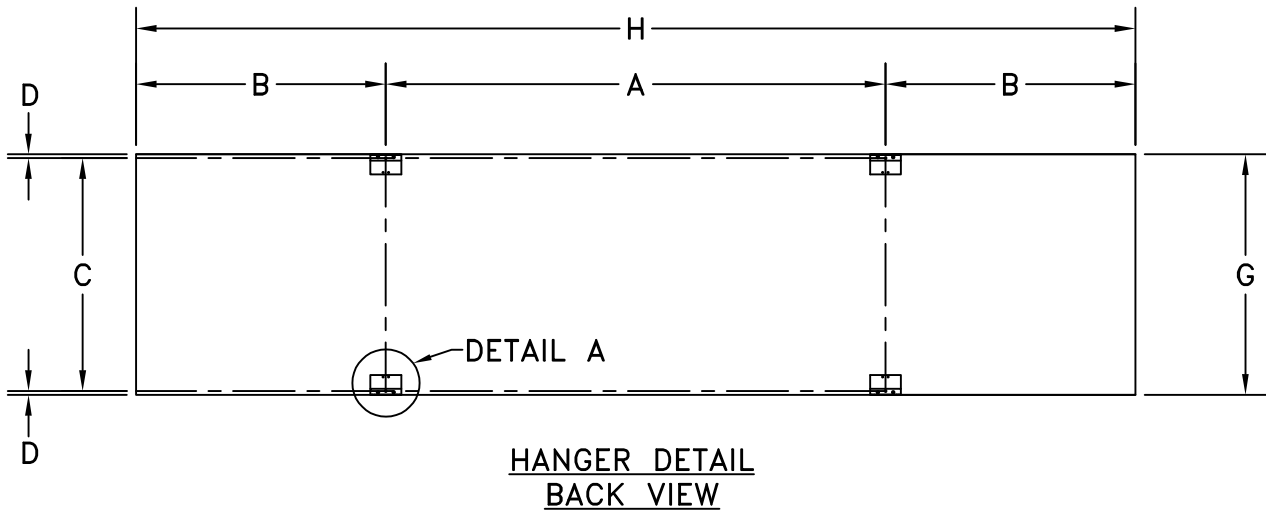
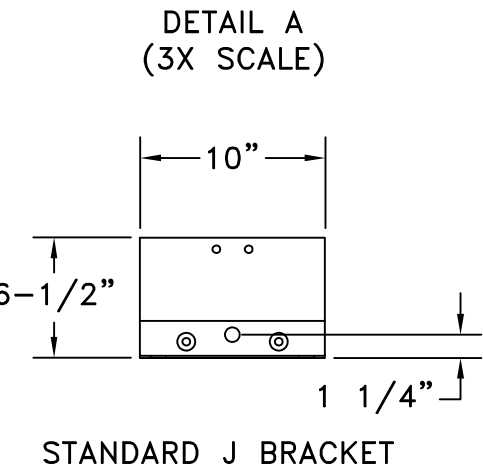
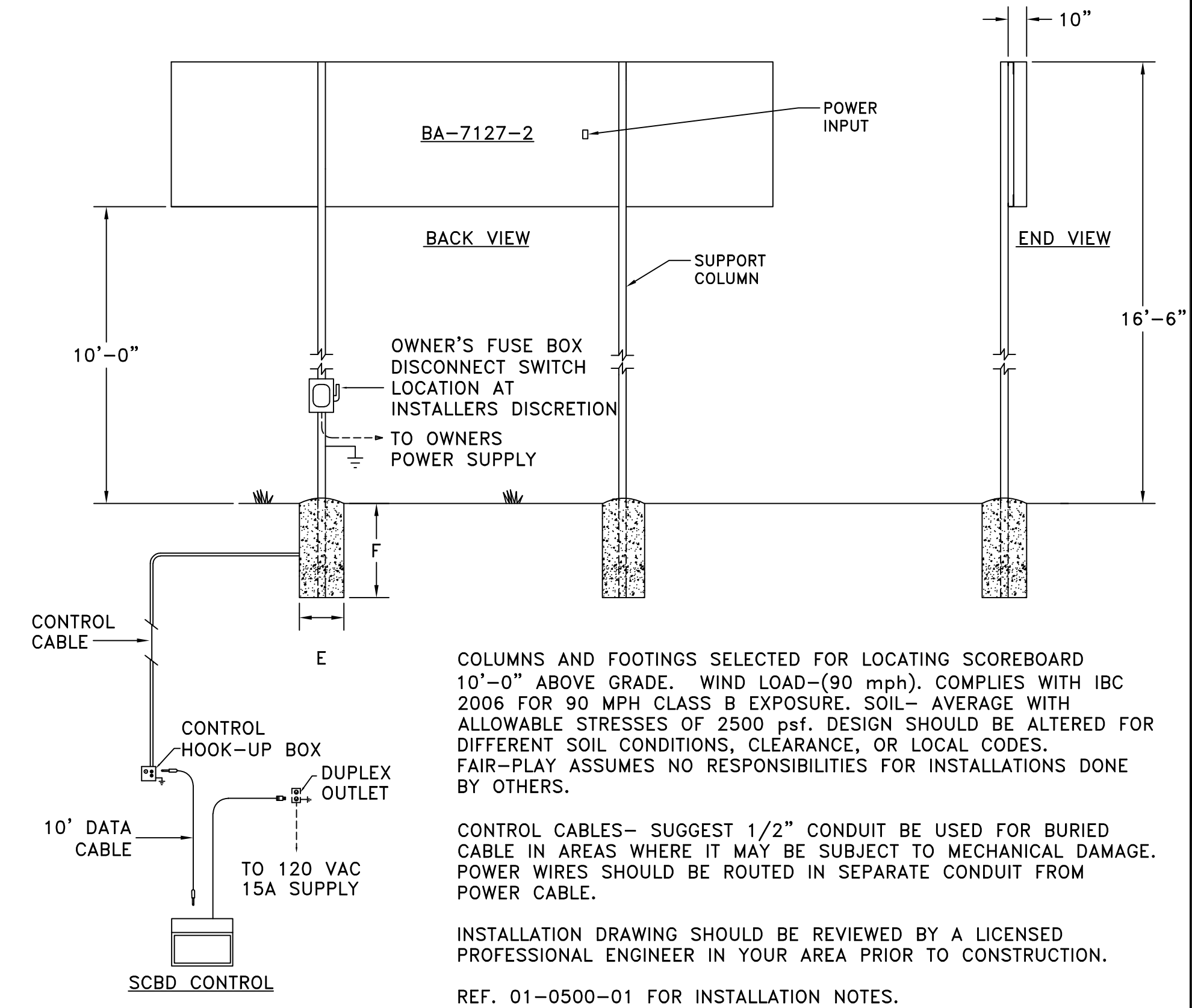


A	B	C	D	E	F	G	H	COLUMNS	POWER
13'-6"	6'-9"	6'-3 1/2"	1 1/4"	3'-0"	9'-6"	6'-6"	27'-0"	W10 X 26	REFERENCE 01-7127-20-1

DIMENSIONS



CUSTOMER APPROVAL:		MY SIGNATURE BELOW SIGNIFIES MY APPROVAL TO PROCEED WITH THE DESIGN WORK SPECIFIED HEREIN AND ACKNOWLEDGEMENT THAT I HAVE RECEIVED AND READ THE INSTALLATION SPECIFICATIONS CONTAINED IN FAIR-PLAY DOCUMENT NO. 01-0500-01. CONSULT YOUR FAIR-PLAY SALES ASSOCIATE IF YOU SHOULD HAVE ANY QUESTIONS OR REQUIRE ANY CHANGES TO THIS DOCUMENT.	
PROJECT:	SIGNATURE:	DATE:	
REFERENCE #:	PRINT NAME:		

FAIR-PLAY				THIS DOCUMENT CONTAINS FAIR-PLAY PROPRIETARY INFORMATION. ANY DISCLOSURE, USE OR DUPLICATION OF THE DOCUMENT OR OF ANY INFORMATION CONTAINED THEREIN FOR OTHER THAN THE SPECIFIC PURPOSE FOR WHICH IT WAS DISCLOSED IS EXPRESSLY PROHIBITED, EXCEPT AS MAY BE OTHERWISE AGREED TO IN WRITING. COPYRIGHT 2022.					
6110 AVIATOR DRIVE HAZELWOOD, MO 63042				TITLE INSTALLATION FOR BA-7127-2		DRAWN BY BEW DATE 12-13-02 SCALE 3/16"=1'-0"		MODEL B BA-7127-2 DWG. NO. 01-7127-20-2	
B	UPDATED TITLE BLOCK FORMAT			07-29-22	BEW				
A	GENERAL UPDATES			04-24-09	RMS				
OR	ORIGINAL RELEASE			12-13-02	BEW				
REV.#	CHANGE			DATE	BY				