

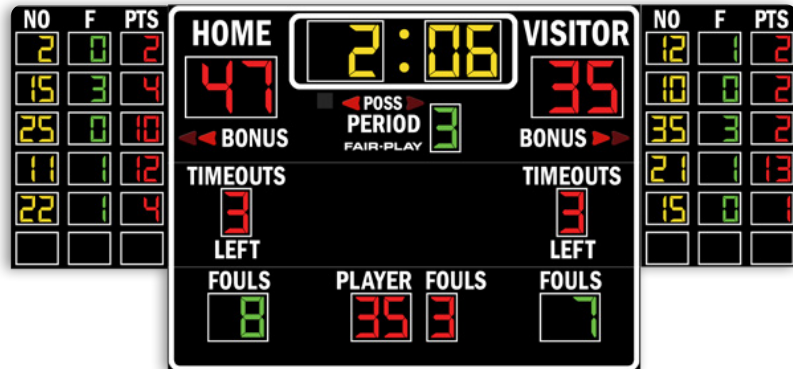
CAPTIONS (H" x W")

HOME	6" x 18"
VISITOR	6" x 25"
PERIOD	4" x 16"
BONUS	4" x 15"
POSS	3" x 9"
FOULS (Personal)	4" x 14"
FOULS (Team)	4" x 14"
PLAYER	4" x 17"
TIMEOUTS	4" x 23"
LEFT	4" x 11"
NO	4" x 6"
F	4" x 2"
PTS	4" x 8"

DIGIT SIZES (H")

Game Clock	12"
Team Scores	12"
Period	10"
Team Fouls	10"
Player Number	10"
Personal Fouls	10"
Timeouts Left	10"
Stats Fouls	6"
Stats Player	6"
Stats Points	6"

MODEL: BB-1646-4



DIMENSIONS

Height	Length	Depth	Weight
7'-0"	15'-0"	4"	558 lbs.

STANDARD EQUIPMENT

- Energy efficient LED designs
- Three distinct LED digit colors to visually organize critical game information
- Heavy-duty, vibrating horn (103 dB)
- 4-level control console display brightness adjustment
- 5-year limited warranty
- Easy access built-in service points
- Quality engineered water resistant aluminum
- Complete, secure and durable display mounting
- Built-in lightning suppressor (for standard data direct wire only)
- Request a free project design renderings
- Help Desk Support
- USA Factory authorized national and local sales, service and installation

OPTIONAL EQUIPMENT

- Full-color electronic message displays
- Integrated scoring and display systems
- Illuminated, non-illuminated identification and sponsorship signage
- Personalized vinyl home team name
- Scoreboard caption color (other than white)
- Custom, unique signage options
- Scoreboard control carrying case
- Truss and decorative steel systems
- Power lighting protector or protective net
- Count side tables options in 8ft, 10ft or 7.7ft long configured with front BB scoreboard
- Synchronized locker room game / time of day clocks
- Protective net

Please see Color Chart PDF for all scoreboard color options.

UV resistant custom paint & vinyl trim colors available.

ELECTRICAL

Voltage	Hertz	Watts	AMPS	Phase	Wiring	Circuits Required	Safety Listing	Scoreboard Display	Control Console
120 VAC	60	348	2.9	1	2-Wire + ground	1	ETL/CETL	-22° to 131° F	-30° to 55° C

OPERATING TEMPERATURES

All weights and measures are approximate. To confirm specifications please contact your local Fair-Play representative.

For applicable models, consult with a sales representative on the following:

- Choice of Fair-Play's scorekeeper approved score systems
- Electronic Team Names
- Rear-illuminated scoreboard captions or scoreboard sport-conversion captions (electronic)
- Changeable scoreboard game captions — electronic available, operated via control
- Integrated, second operator statistics control

For orders and questions:
sales@fair-play.com

FAIRPLAY CORPORATION 800.247.0265 • fair-play.com
Over 85 Years of Sports Scoring Experience 6110 Aviator Drive, Hazelwood, MO 63042