



## **HAND SWITCH & GOAL LIGHTS INSTRUCTION MANUALS**

REVISION DATE: 05-15-07  
PART#: 98-0005-01



## SERVICE & CUSTOMER INFORMATION

CUSTOMER MUST HAVE PART NUMBER WHEN ORDERING ITEMS THROUGH THE SERVICE DEPARTMENT.

IF FURTHER HELP IS NEEDED CONTACT A FAIR-PLAY SERVICE REP IN YOUR FAIR-PLAY DEALER ORGANIZATION OR PHONE THE FAIR-PLAY SERVICE DEPARTMENT (800) 747-5305 OR (800) 462-2716.

TO AID YOU IN YOUR DISCUSSIONS WITH SERVICE REPS, WE SUGGEST THAT YOU RECORD THE FOLLOWING:

MODEL NUMBER: \_\_\_\_\_

FAIR-PLAY SALES ORDER NUMBER: \_\_\_\_\_  
(THIS NUMBER IS FOUND IN THE UPPER RIGHT HAND CORNER OF THE PACKING SLIP AND INVOICE.)

INSTALLATION DATE: \_\_\_\_\_

WARRANTY: A COPY OF THE **FIVE-YEAR LIMITED WARRANTY** IS ENCLOSED.

## **FAIR-PLAY SCOREBOARDS**

### **MANUALS INCLUDED:** **TABLE OF CONTENTS**

4615-ST2

F600

F600-70

F650

F650-70

F675

F675-70

HC-70

HC-70-1

HH-70

HS-70

TA-70

D388

D388-70

BB-6000-GL

GL-612

WARRANTY

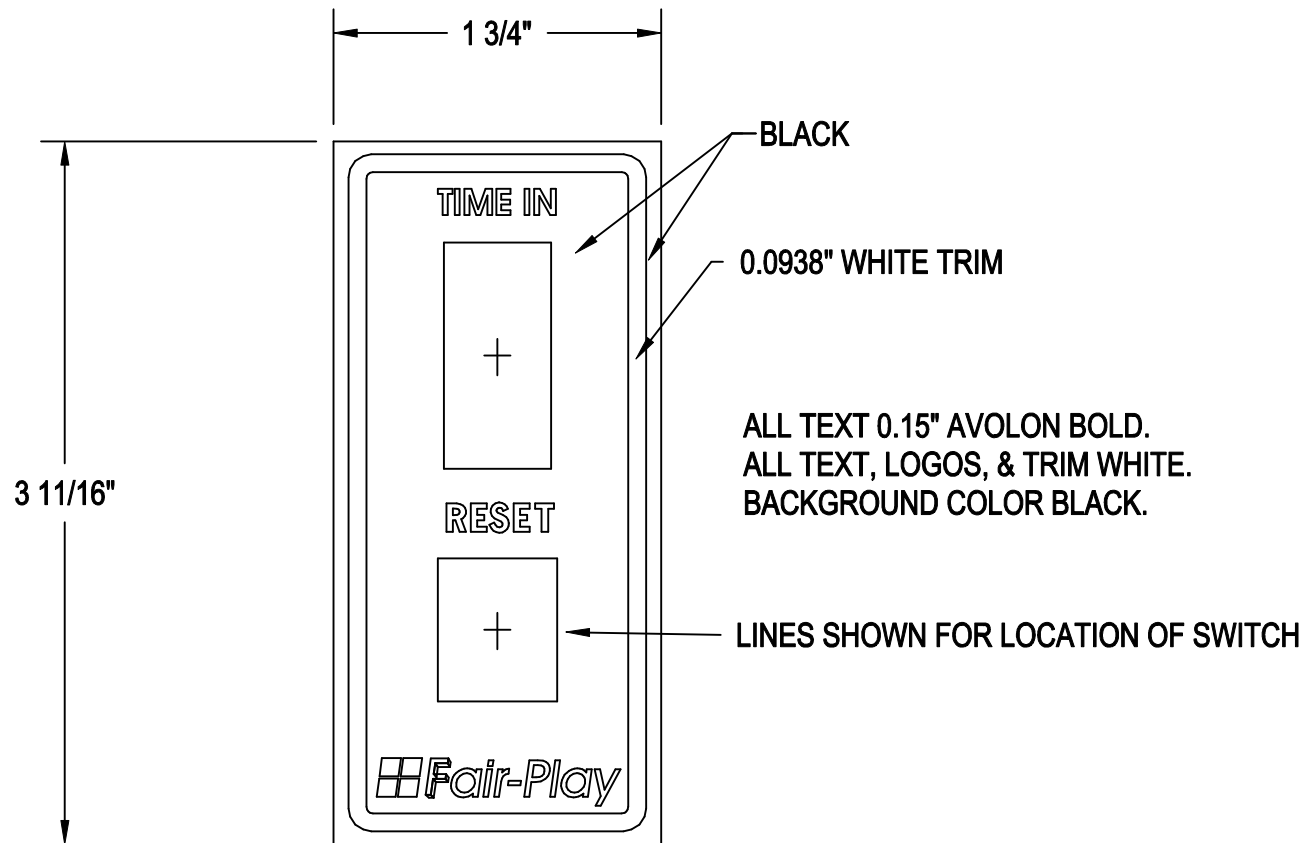


**4615-ST2 HAND SWITCH  
OPERATING MANUAL**

TABLE OF CONTENTS

DESCRIPTION	DRAWING NUMBER
4615-ST2 SHOT TIMER WIRING & ASSEMBLY.....	Z-6-F100-3
4615-ST2 COVERLAY DETAILS.....	Z-8-F100-3





**COVERLAY DETAILS**  
**FP# L0797**

1	F-P LOGO UPDATED	10-27-97	BEW
ITEM	CHANGE	DATE	BY

**Fair-Play**  
 A **TRANS-LUX** Company  
 1700 DELAWARE AVE.  
 DES MOINES, IA 50317

THIS DOCUMENT CONTAINS FAIR-PLAY PROPRIETARY INFORMATION. ANY DISCLOSURE, USE OR DUPLICATION OF THE DOCUMENT OR OF ANY INFORMATION CONTAINED THEREIN FOR OTHER THAN THE SPECIFIC PURPOSE FOR WHICH IT WAS DISCLOSED IS EXPRESSLY PROHIBITED, EXCEPT AS MAY BE OTHERWISE AGREED TO IN WRITING

TITLE  COVERLAY DETAILS FOR HANDSWITCH 4615-CL2 & 4615-ST2	DRAWN BY MEB	A	MODEL:
	DATE 02-28-95		
	SCALE FULL	DWG. NO. Z-8-F100-3	



**F600 SIDELINE HAND  
SWITCH WITH SPLIT TIME  
INSTRUCTION MANUAL**

TABLE OF CONTENTS

<b>DESCRIPTION</b>	<b>DRAWING NUMBER</b>
F600 SIDELINE HAND SWITCH INSTALLATION.....	EY-6-F600
F600 SIDELINE HAND SWITCH WIRING.....	Z-6-F600
F600 SIDELINE HAND SWITCH PRESSBOX HOOK-UP CABLE DETAIL.....	N-6-F600-1

# CHART A HANDSWITCH CONTROL CIRCUITS

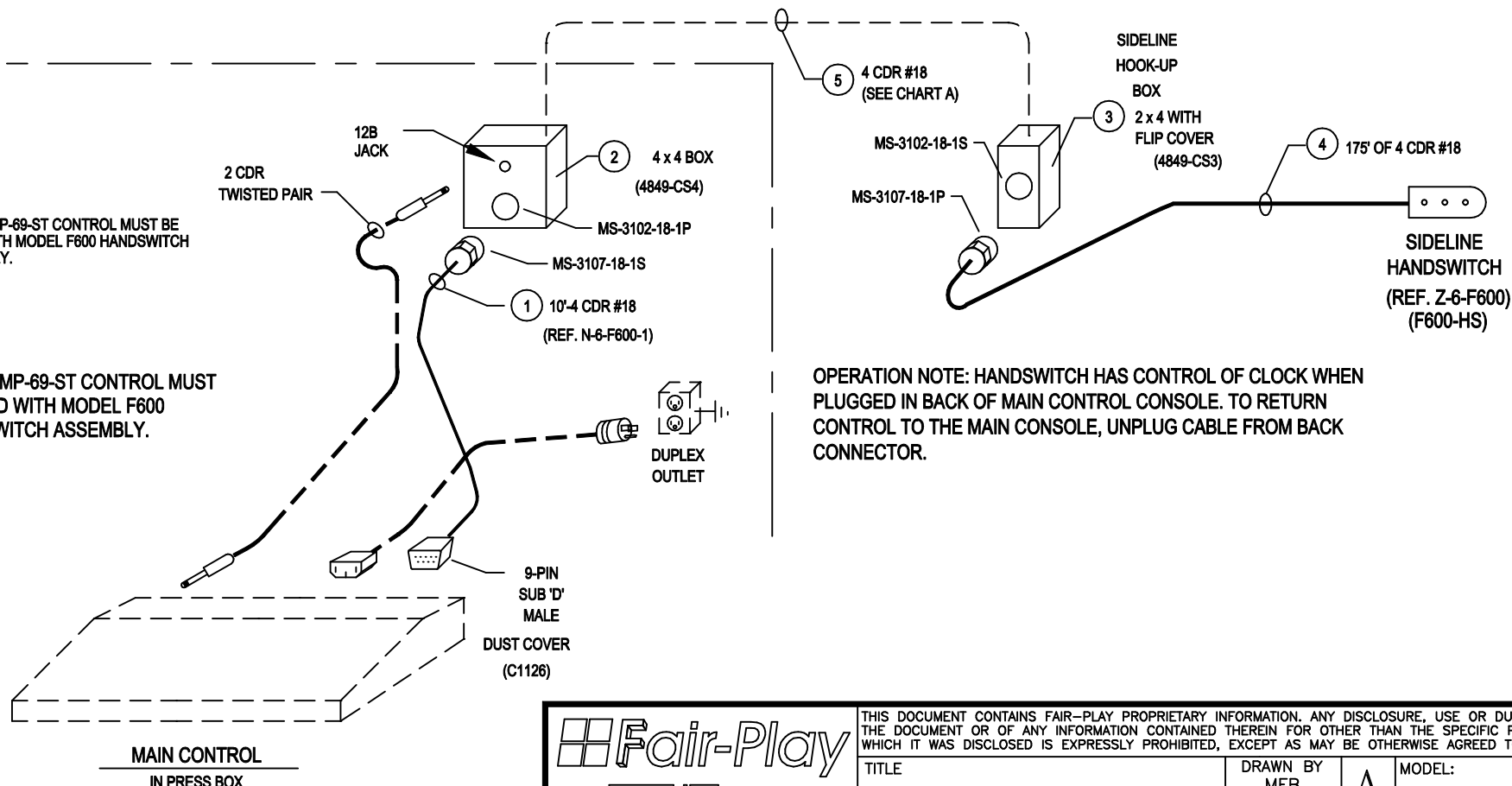
PIN#	CIRCUIT	CONDUCTOR COLOR
A	CLOCK RUN	RED
B	CLOCK SET	BLACK
C	SPLIT TIME	WHITE
G	LOGIC GROUND	GREEN

## PARTS LIST

ITEM	QTY	DESCRIPTION
1	1	10' - 8 CDR W/ 9-PIN SUB 'D' (MALE) & MS-3107-18-1S
2	1	4 x 4 BOX W/ 12B JACK & MS-3102-18-1P
3	1	2 x 4 BOX W/ FLIP COVER & MS-3102-18-1S
4	1	HANDSW. W/ 175' OF 4 CDR & MS-3107-18-1P
5	—	4 CDR #18 CABLE (C0022)
6		
7		
8		

NOTE:  
MODEL MP-69-ST CONTROL MUST BE  
USED WITH MODEL F600 HANDSWITCH  
ASSEMBLY.

NOTE:  
MODEL MP-69-ST CONTROL MUST  
BE USED WITH MODEL F600  
HANDSWITCH ASSEMBLY.



OPERATION NOTE: HANDSWITCH HAS CONTROL OF CLOCK WHEN  
PLUGGED IN BACK OF MAIN CONTROL CONSOLE. TO RETURN  
CONTROL TO THE MAIN CONSOLE, UNPLUG CABLE FROM BACK  
CONNECTOR.

**Fair-Play**  
A **TRANS-LUX** Company  
1700 DELAWARE AVE.  
DES MOINES, IA 50317

THIS DOCUMENT CONTAINS FAIR-PLAY PROPRIETARY INFORMATION. ANY DISCLOSURE, USE OR DUPLICATION OF THE DOCUMENT OR OF ANY INFORMATION CONTAINED THEREIN FOR OTHER THAN THE SPECIFIC PURPOSE FOR WHICH IT WAS DISCLOSED IS EXPRESSLY PROHIBITED, EXCEPT AS MAY BE OTHERWISE AGREED TO IN WRITING

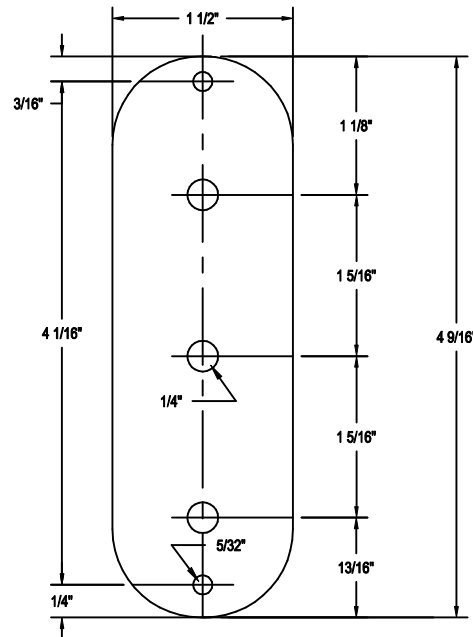
TITLE SIDELINE HANDSWITCH WITH SPLIT TIME MODEL: F600	DRAWN BY MEB	A	MODEL: F600
	DATE 08-11-95		
	SCALE NONE	DWG. NO. EY-6-F600	

ITEM	CHANGE	DATE	BY
------	--------	------	----



+  
 SPLIT TIME  
 +  
 NORMAL  
 RESET  
 +  
 MODEL #F600-HS  
 TIME IN  
 +  
 TIME OUT

**ITEM 1**  
 HANDSWITCH COVERLAY  
 (TRIM TO COVER)  
 BLACK LETTERS  
 (L0835)

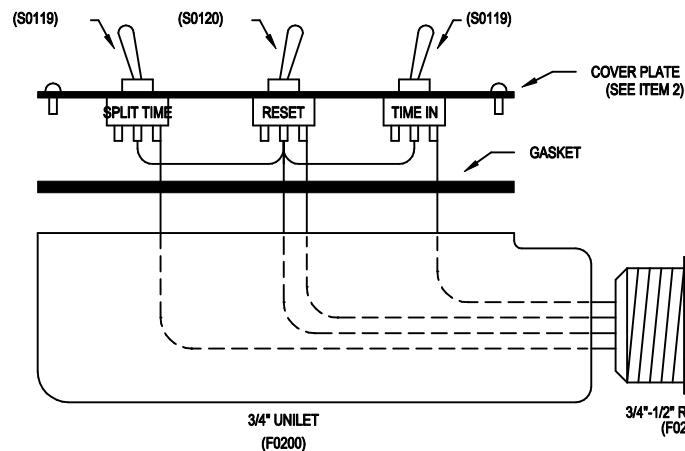
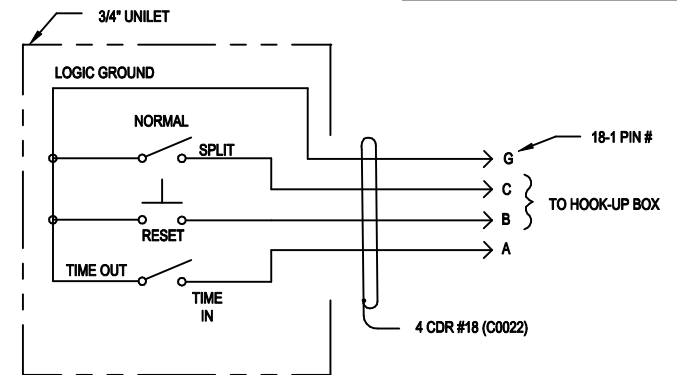


**ITEM 2**  
 UNILET COVER  
 0.050 AL

MODEL: F600-HS  
 CODE: HH95

## CONTROL CIRCUIT

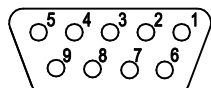
PIN#	CIRCUIT	COLOR
A	TIME IN/OUT	RED
B	CLK RESET	BLACK
C	SPLIT TIME	WHITE
D	—	—
E	—	—
F	—	—
G	LOGIC GND	GREEN



**ITEM 3**  
 ASSEMBLY DETAIL

**Fair-Play**  
 A **PER-LO** Company  
 1700 DELAWARE AVE.  
 DES MOINES, IA 50317

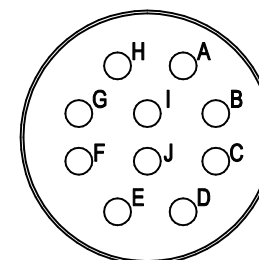
THIS DOCUMENT CONTAINS FAIR-PLAY PROPRIETARY INFORMATION. ANY DISCLOSURE, USE OR DUPLICATION OF THE DOCUMENT OR OF ANY INFORMATION CONTAINED THEREIN FOR OTHER THAN THE SPECIFIC PURPOSE FOR WHICH IT WAS DISCLOSED IS EXPRESSLY PROHIBITED, EXCEPT AS MAY BE OTHERWISE AGREED TO IN WRITING			
TITLE	DRAWN BY	DATE	MODEL:
SIDELINE HANDSWITCH WITH SPLIT TIME	MEB	08-11-95	B F600
MODEL: F600	SCALE	DWG. NO.	
	FULL	Z-6-F600	



9-PIN SUB "D"  
BACK VIEW

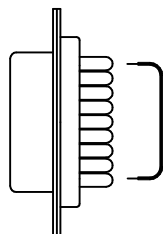
- PIN 1 - GROUND - GREEN
- PIN 2 - CLOCK RUN - RED
- PIN 3 - CLOCK SET - BLACK
- PIN 4 - SPLIT TIME - WHITE
- PIN 5 - JUMPER TO PIN 9 - #22 BLACK
- PIN 9 - JUMPER TO PIN 5 - #22 BLACK

- PIN A - TIME IN/OUT - RED
- PIN B - CLOCK RESET - BLACK
- PIN C - SPLIT TIME - WHITE
- PIN G - LOGIC GROUND - GREEN



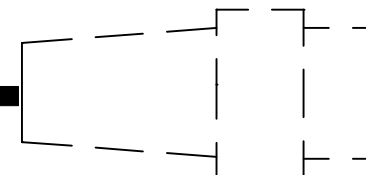
3107-18-1S  
BACK VIEW

9 PIN SUB "D"  
CONNECTOR  
(C0604)  
DUST CAP  
(C1126)



TO CONTROL  
9-PIN SUB "D" CONNECTOR

(10') 4 CDR #18 (C0022)



3107-18-1S  
(C0072-CL)

TO 4 X 4 HOOK-UP BOX  
10-PIN AMPHENOL CONNECTOR

 **Fair-Play**

A  Company

1700 DELAWARE AVE.  
DES MOINES, IA 50317

THIS DOCUMENT CONTAINS FAIR-PLAY PROPRIETARY INFORMATION. ANY DISCLOSURE, USE OR DUPLICATION OF THE DOCUMENT OR OF ANY INFORMATION CONTAINED THEREIN FOR OTHER THAN THE SPECIFIC PURPOSE FOR WHICH IT WAS DISCLOSED IS EXPRESSLY PROHIBITED, EXCEPT AS MAY BE OTHERWISE AGREED TO IN WRITING

TITLE  
PRESSBOX HOOK-UP CABLE  
FOR MODLES F600 & F650  
SIDELINE HANDSWITCHES

DRAWN BY  
MEB  
DATE  
08-11-95  
SCALE  
NONE

MODEL:  
A F600, F650  
DWG. NO.  
N-6-F600-1

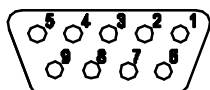
ITEM	CHANGE	DATE	BY
------	--------	------	----



**F600-70 SIDELINE HAND  
SWITCH WITH SPLIT TIME USED WITH MP-70  
INSTRUCTION MANUAL**

TABLE OF CONTENTS

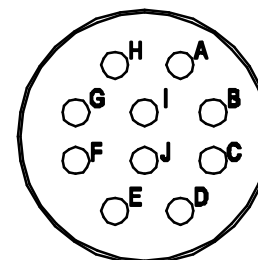
DESCRIPTION	DRAWING NUMBER
F600-70 SIDELINE HAND SWITCH WIRING.....	Z-6-F600 (REFER TO F600 SECTION)
F600-70 SIDELINE HAND SWITCH PRESSBOX HOOK-UP CABLE DETAIL.....	N-6-F600-2



9-PIN SUB "D"  
BACK VIEW

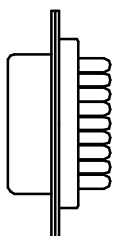
PIN 1 - GROUND - GREEN  
PIN 6 - CLOCK RUN - RED  
PIN 2 - CLOCK SET - BLACK  
PIN 7 - SPLIT TIME - WHITE

PIN A - TIME IN/OUT - RED  
PIN B - CLOCK RESET - BLACK  
PIN C - SPLIT TIME - WHITE  
PIN G - LOGIC GROUND - GREEN



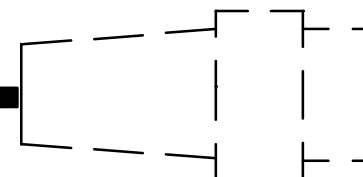
3107-18-1S  
BACK VIEW

9 PIN SUB "D"  
CONNECTOR  
(C0604)  
DUST CAP  
(C1126)



TO CONTROL  
9-PIN SUB "D" CONNECTOR

(10-07) 4 CDR #22 (C0022)



3107-18-1S  
(C0072-CL)

TO 4 X 4 HOOK-UP BOX  
10-PIN AMPHENOL CONNECTOR

Fair-Play

A Company

1700 DELAWARE AVE.  
DES MOINES, IA 50317

THIS DOCUMENT CONTAINS FAIR-PLAY PROPRIETARY INFORMATION. ANY DISCLOSURE, USE OR DUPLICATION OF THE DOCUMENT OR OF ANY INFORMATION CONTAINED THEREIN FOR OTHER THAN THE SPECIFIC PURPOSE FOR WHICH IT WAS DISCLOSED IS EXPRESSLY PROHIBITED, EXCEPT AS MAY BE OTHERWISE AGREED TO IN WRITING

TITLE  
HOOK-UP CBL F6(00)(50)  
-70 SIDELINE HAND  
SWITCHES W/ MP-70 CTRL

DRAWN BY  
BEW  
DATE  
09-24-99  
SCALE  
NONE

MODEL:  
A F6(00)(50)-70  
DWG. NO.  
N-6-F600-2

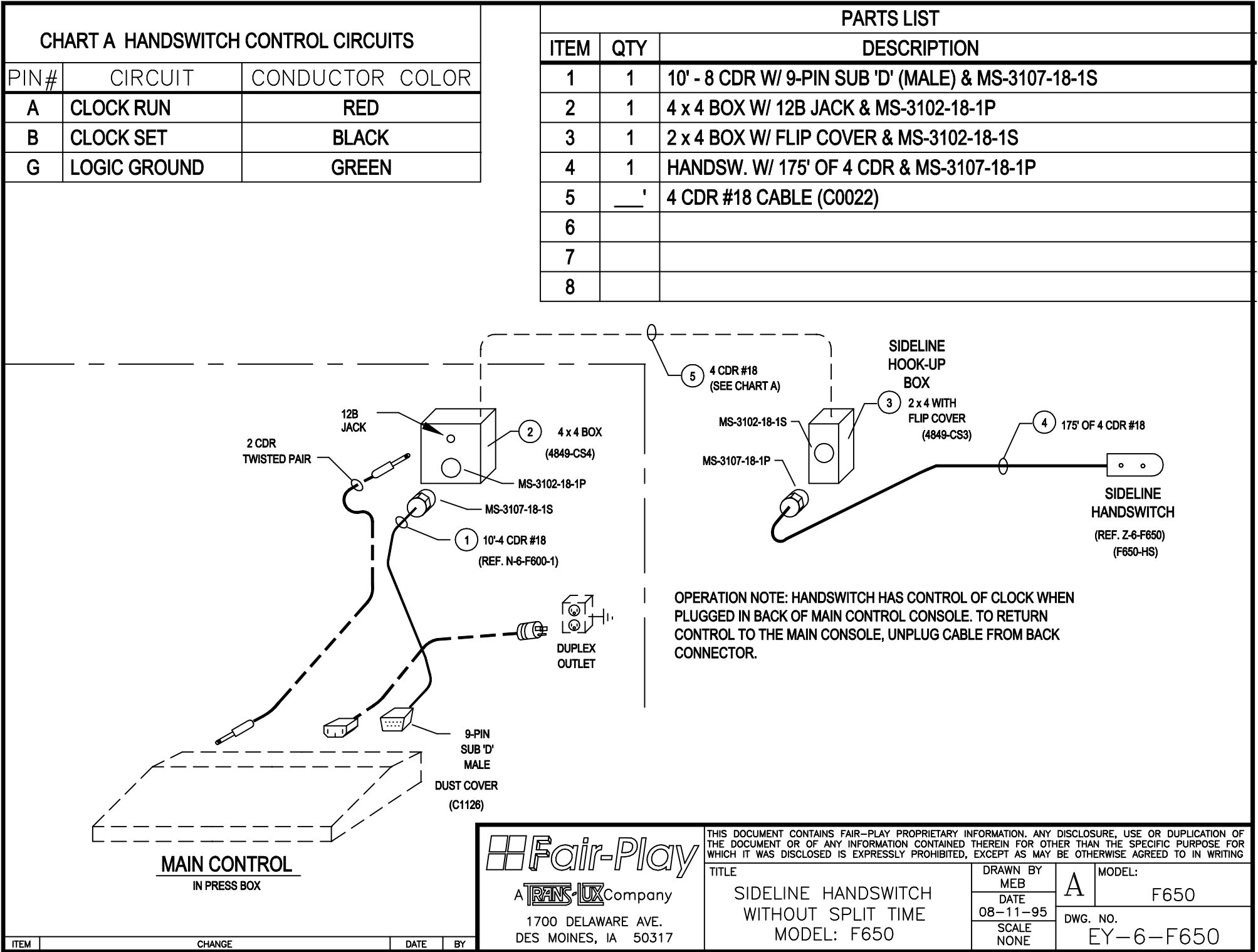
	CORRECTED WIRE SIZE FROM #18 TO #22 GAUGE	12-4-01	NAP
ITEM	CHANGE	DATE	BY

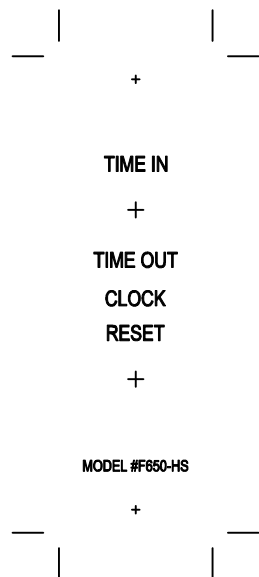


## F650 SIDELINE HAND SWITCH INSTRUCTION MANUAL

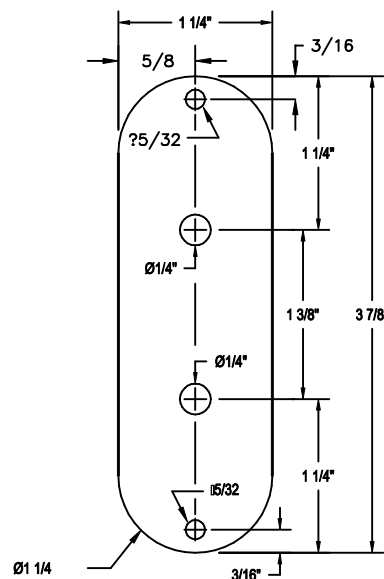
### TABLE OF CONTENTS

DESCRIPTION	DRAWING NUMBER
F650 SIDELINE HAND SWITCH INSTALLATION.....	EY-6-F650
F650 SIDELINE HAND SWITCH WIRING.....	Z-6-F650
F650 SIDELINE HAND SWITCH PRESSBOX HOOK-UP DETAIL.....	N-6-F600-1 (REFER TO F600 SECTION)





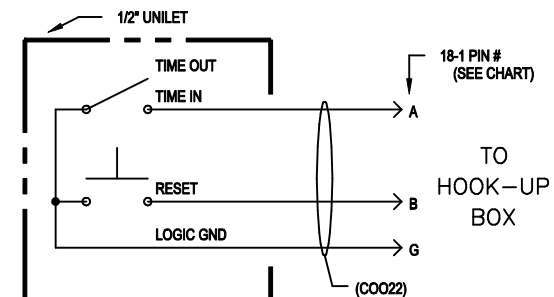
**ITEM 1**  
HANDSWITCH COVERLAY  
(TRIM TO COVER)  
BLACK LETTERS  
(L0836)



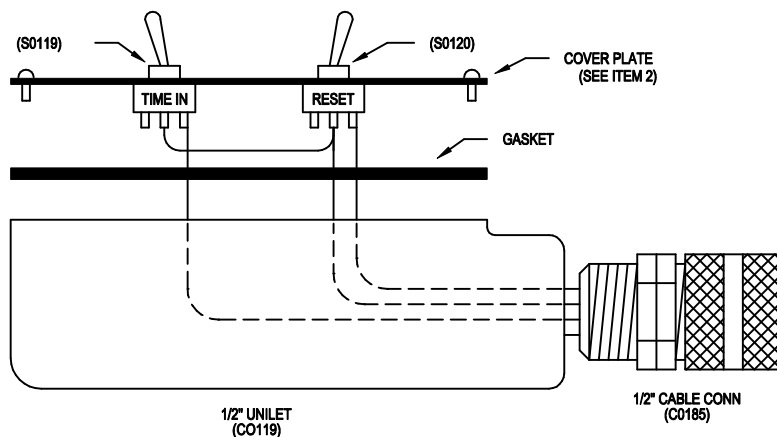
**ITEM 2**  
UNILET COVER  
0.050 AL  
CUT TO FIT UNILET

MODEL: F650-HS  
CODE: HH95

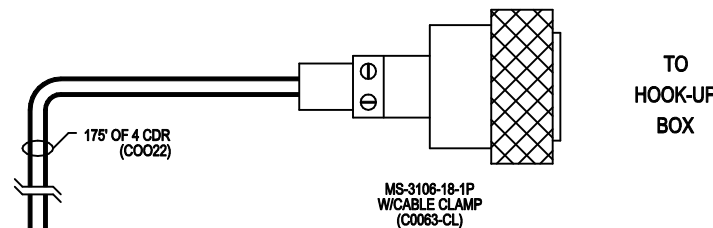
CONTROL CIRCUIT		
PIN#	CIRCUIT	COLOR
A	TIME IN/OUT	RED
B	CLK RESET	BLACK
C	—	—
D	—	—
E	—	—
F	—	—
G	LOGIC GND	GREEN



**CIRCUIT SCHEMATIC**



**ITEM 3**  
ASSEMBLY DETAIL



		THIS DOCUMENT CONTAINS FAIR-PLAY PROPRIETARY INFORMATION. ANY DISCLOSURE, USE OR DUPLICATION OF THE DOCUMENT OR OF ANY INFORMATION CONTAINED THEREIN FOR OTHER THAN THE SPECIFIC PURPOSE FOR WHICH IT WAS DISCLOSED IS EXPRESSLY PROHIBITED, EXCEPT AS MAY BE OTHERWISE AGREED TO IN WRITING.	
		TITLE SIDELINE HANDSWITCH FOR GAME CLOCK CONTROL MODEL: F650	DRAWN BY MEB DATE 08-12-95 SCALE NONE

ITEM	CHANGE	DATE	BY
------	--------	------	----



**F650-70 SIDELINE HAND SWITCH USED WITH MP-70  
INSTRUCTION MANUAL**

TABLE OF CONTENTS

DESCRIPTION	DRAWING NUMBER
F650-70 SIDELINE HAND SWITCH WIRING.....	Z-6-F650 (REFER TO F650 SECTION)
F650-70 SIDELINE HAND SWITCH PRESSBOX HOOK-UP DETAIL.....	N-6-F600-2 (REFER TO F600-70 SECTION)





**F675 SIDELINE HAND SWITCH  
INSTRUCTION MANUAL**

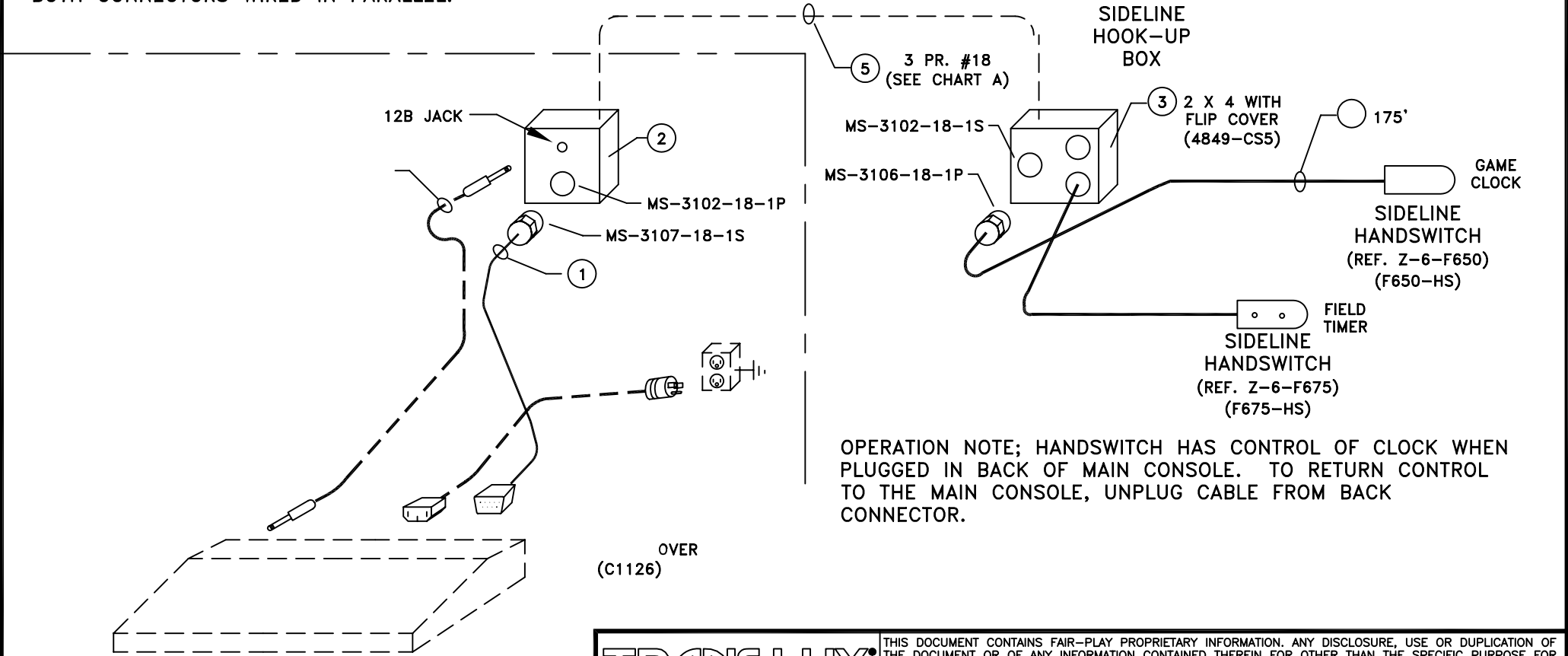
TABLE OF CONTENTS

DESCRIPTION	DRAWING NUMBER
F675 SIDELINE HAND SWITCH INSTALLATION.....	EY-6-F675-2
F675 SIDELINE HAND SWITCH WIRING.....	Z-6-F650 (REFER TO 600 SECTION)
F675 SIDELINE HAND SWITCH PRESSBOX HOOK-UP DETAIL.....	N-6-F675-2

CHART A HANDSWITCH CONTROL CIRCUITS		
PIN#	CIRCUIT	CONDUCTOR COLOR
A	CLOCK RUN	RED
B	CLOCK SET	WHITE
G	LOGIC GROUND	BLACK OF RED
C	FIELD TIMER RUN	GREEN
D	FIELD TIMER RESET	BLACK OF GREEN
H	LOGIC GROUND	BLACK OF WHITE

NOTE:  
BOTH CONNECTORS WIRED IN PARALLEL.

PARTS LIST		
ITEM	QTY	DESCRIPTION
1	1	10' - 8 CDR W/ 9-PIN SUB 'D' (MALE) & MS-3107-18-1S
2	1	4 x 4 BOX W/ 12B JACK & MS-3102-18-1P
3	1	4 x 4 BOX W/ FLIP COVER & MS-3102-18-1S CONNS.
4	1	HANDSW. W/ 175' OF 4 CDR & MS-3107-18-1P (GAME CLOCK)
5		6 CDR #18 CABLE BELDON 8690 OR EQUIV.
6		
7		
8		



OPERATION NOTE; HANDSWITCH HAS CONTROL OF CLOCK WHEN PLUGGED IN BACK OF MAIN CONSOLE. TO RETURN CONTROL TO THE MAIN CONSOLE, UNPLUG CABLE FROM BACK CONNECTOR.

REV.#

CHANGE

DATE

BY

TRANS·LUX

Fair-Play

1700 DELAWARE AVE.  
DES MOINES, IA 50317

THIS DOCUMENT CONTAINS FAIR-PLAY PROPRIETARY INFORMATION. ANY DISCLOSURE, USE OR DUPLICATION OF THE DOCUMENT OR OF ANY INFORMATION CONTAINED THEREIN FOR OTHER THAN THE SPECIFIC PURPOSE FOR WHICH IT WAS DISCLOSED IS EXPRESSLY PROHIBITED, EXCEPT AS MAY BE OTHERWISE AGREED TO IN WRITING

TITLE

SIDELINE HANDSWITCH  
WITHOUT SPLIT ITME  
MODEL F675

DRAWN BY  
NAP

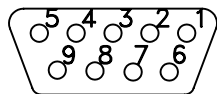
DATE  
10-05-01

SCALE  
NONE

A

MODEL:  
F675

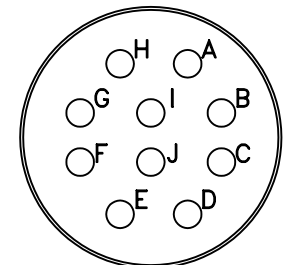
DWG. NO.  
EY-6-F675-2



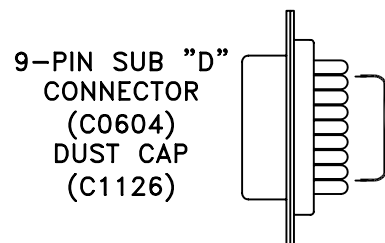
9-PIN SUB "D"  
BACK VIEW

PIN 1-GROUND-GREEN  
 PIN 2-CLOCK RUN-RED  
 PIN 3-CLOCK SET-WHITE  
 PIN 4-N.C  
 PIN 5-JUMPER TO PIN 9-#22 BLACK  
 PIN 9-JUMPER TO PIN 5-#22 BLACK

PIN A - TIME IN/OUT - RED  
 PIN B - GAME CLOCK RESET - WHITE  
 PIN C - FIELD TIMER RUN - ORANGE  
 PIN D - FIELD TIMER RESET - BLUE  
 PIN G - (GND) - BLACK  
 PIN H - (GND) - GREEN

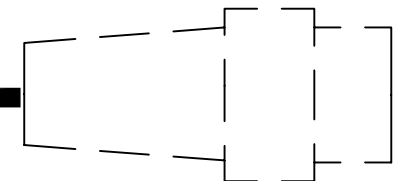


3107-18-1S  
FRONT VIEW



9-PIN SUB "D"  
CONNECTOR  
(C0604)  
DUST CAP  
(C1126)

(10') 8 CDR #24 (C0520)



3107-18-1S  
(C0072-CL)

TO CONTROL  
9-PIN SUB "D" CONNECTOR

TO 4 X 4 HOOK-UP BOX  
10-PIN AMPHENOL CONNECTOR

**TRANS·LUX**  
*Fair-Play*

1700 DELAWARE AVE.  
 DES MOINES, IA 50317

THIS DOCUMENT CONTAINS FAIR-PLAY PROPRIETARY INFORMATION. ANY DISCLOSURE, USE OR DUPLICATION OF THE DOCUMENT OR OF ANY INFORMATION CONTAINED THEREIN FOR OTHER THAN THE SPECIFIC PURPOSE FOR WHICH IT WAS DISCLOSED IS EXPRESSLY PROHIBITED, EXCEPT AS MAY BE OTHERWISE AGREED TO IN WRITING

TITLE PRESSBOX HOOK-UP CABLE FOR MODELS F675 SIDELINE HANDSWITCH	DRAWN BY NAP	A	MODEL: F675
	DATE 10-05-01		DWG. NO. N-6-F675-2
	SCALE NONE		



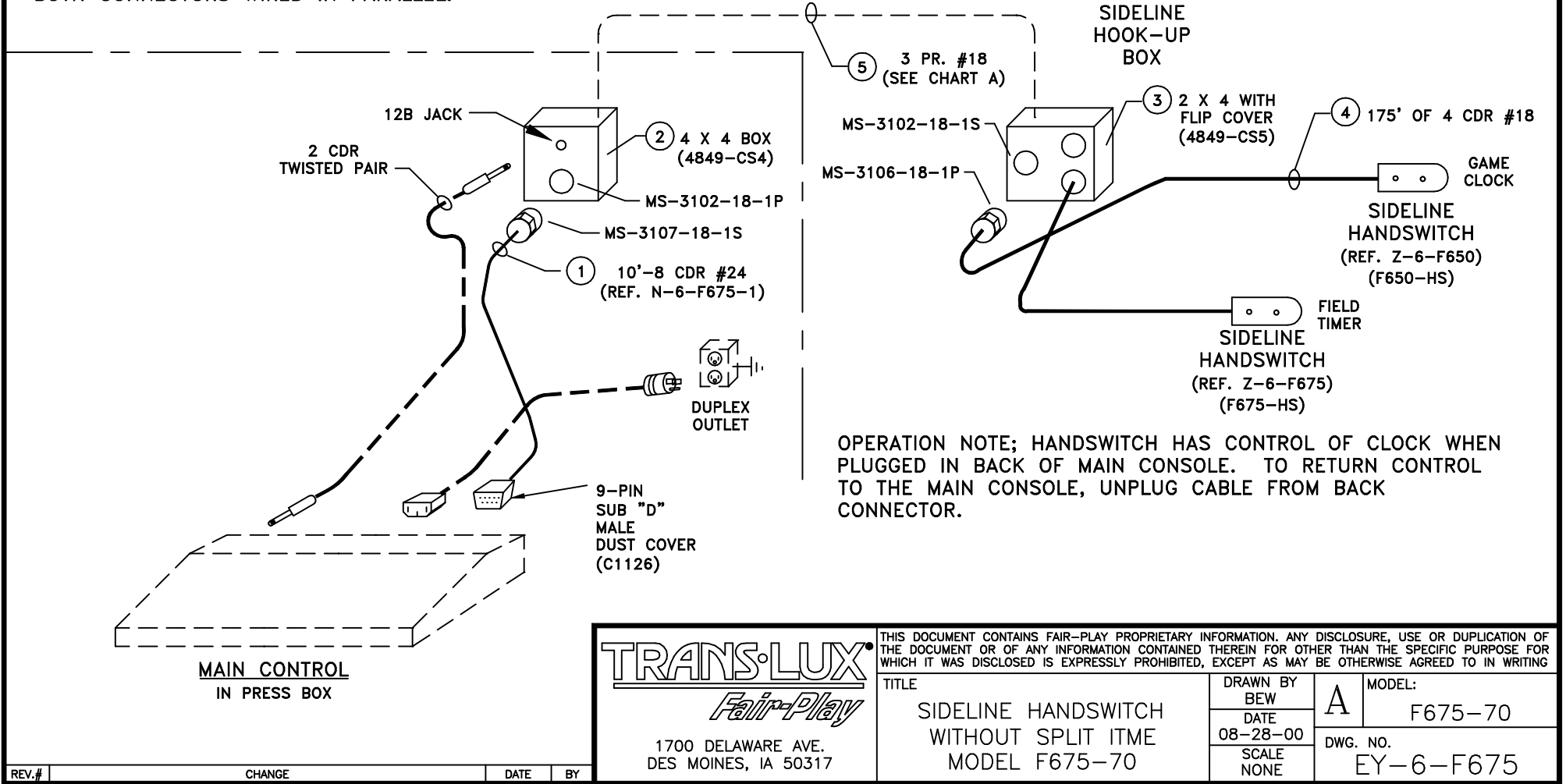
**F675-70 SIDELINE HAND SWITCH FOR FIELD TIMER & GAME  
CLOCK USED WITH MP-70 INSTRUCTION MANUAL**

TABLE OF CONTENTS

DESCRIPTION	DRAWING NUMBER
F675-70 SIDELINE HAND SWITCH WITHOUT SPLIT TIME.....	EY-6-F675
F675-70 SIDELINE HAND SWITCH FOR GAME CLOCK WIRING.....	Z-6-F675
F675-70 SIDELINE HAND SWITCH PRESSBOX HOOK-UP DETAIL.....	N-6-F675-1

CHART A HANDSWITCH CONTROL CIRCUITS			PARTS LIST		
PIN#	CIRCUIT	CONDUCTOR COLOR	ITEM	QTY	DESCRIPTION
A	CLOCK RUN	RED	1	1	10' – 8 CDR W/ 9-PIN SUB 'D' (MALE) & MS-3107-18-1S
B	CLOCK SET	WHITE	2	1	4 x 4 BOX W/ 12B JACK & MS-3102-18-1P
G	LOGIC GROUND	BLACK OF RED	3	1	4 x 4 BOX W/ FLIP COVER & MS-3102-18-1S CONNS.
C	FIELD TIMER RUN	GREEN	4	1	HANDSW. W/ 175' OF 4 CDR & MS-3107-18-1P (GAME CLOCK)
D	FIELD TIMER RESET	BLACK OF GREEN	5		6 CDR #18 CABLE BELDON 8690 OR EQUIV.
H	LOGIC GROUND	BLACK OF WHITE	6		
			7		
			8		

NOTE:  
BOTH CONNECTORS WIRED IN PARALLEL.

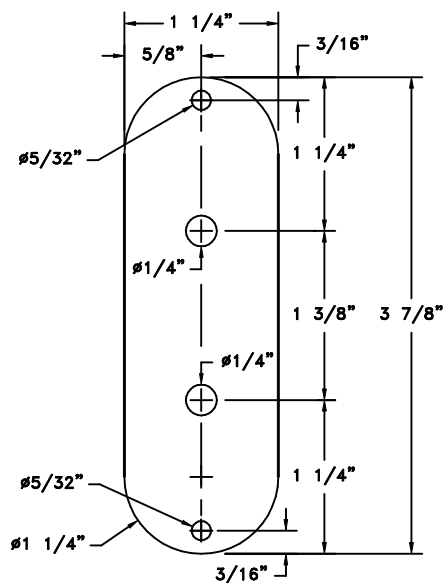
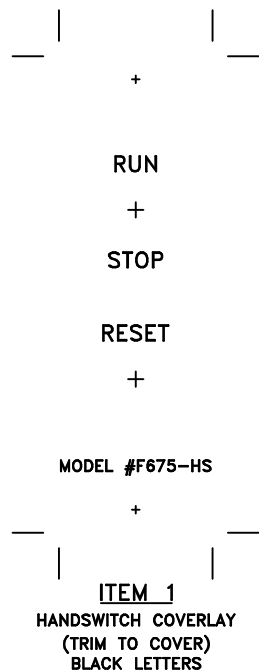


REV.#	CHANGE	DATE	BY
-------	--------	------	----

1700 DELAWARE AVE.  
DES MOINES, IA 50317

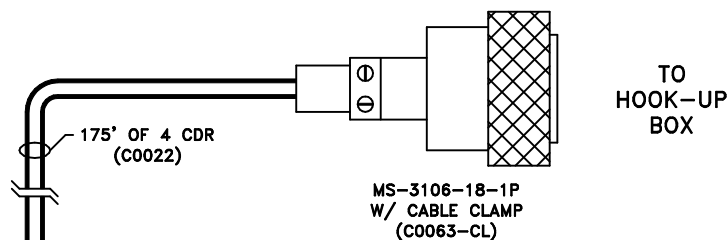
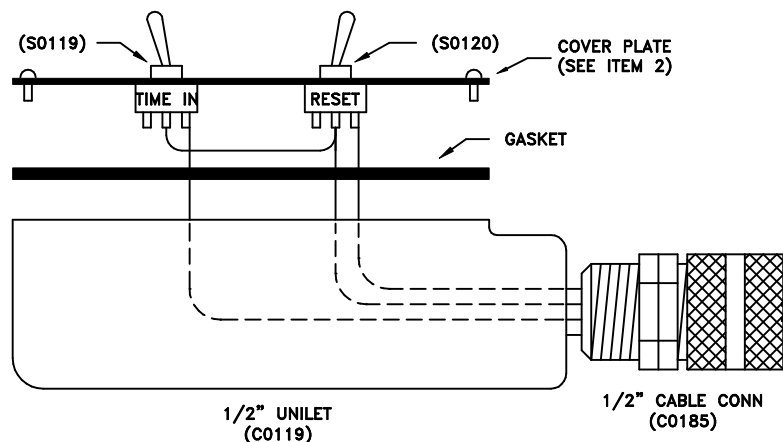
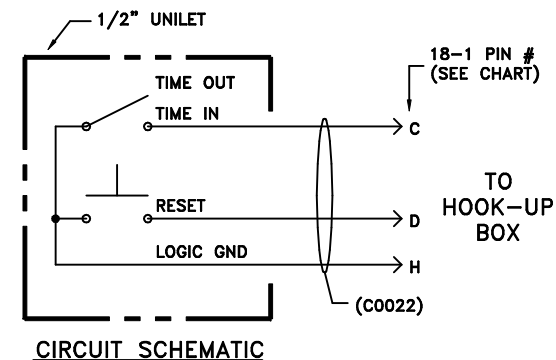
THIS DOCUMENT CONTAINS FAIR-PLAY PROPRIETARY INFORMATION. ANY DISCLOSURE, USE OR DUPLICATION OF THE DOCUMENT OR OF ANY INFORMATION CONTAINED THEREIN FOR OTHER THAN THE SPECIFIC PURPOSE FOR WHICH IT WAS DISCLOSED IS EXPRESSLY PROHIBITED, EXCEPT AS MAY BE OTHERWISE AGREED TO IN WRITING

TITLE	DRAWN BY	DATE	MODEL:
SIDELINE HANDSWITCH WITHOUT SPLIT ITME MODEL F675-70	BEW	08-28-00	A F675-70
	SCALE	NONE	DWG. NO.
			EY-6-F675

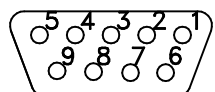


MODEL: F650-HS  
CODE: HH95

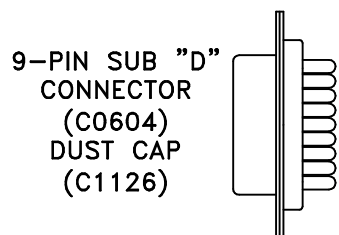
CONTROL CIRCUIT		
PIN#	CIRCUIT	COLOR
A	---	---
B	---	---
C	FIELD TIMER	RED
D	FIELD TIMER RESET	BLACK
E	---	---
F	---	---
H	LOGIC GND	GREEN



<b>TRANS-LUX</b> <i>Fair-Play</i> 1700 DELAWARE AVE. DES MOINES, IA 50317	THIS DOCUMENT CONTAINS FAIR-PLAY PROPRIETARY INFORMATION. ANY DISCLOSURE, USE OR DUPLICATION OF THE DOCUMENT OR OF ANY INFORMATION CONTAINED THEREIN FOR OTHER THAN THE SPECIFIC PURPOSE FOR WHICH IT WAS DISCLOSED IS EXPRESSLY PROHIBITED, EXCEPT AS MAY BE OTHERWISE AGREED TO IN WRITING.
TITLE SIDELINE HANDSWITCH FOR FIELD TIMER CONTROL MODEL F675-70	DRAWN BY BEW DATE 08-28-00 SCALE NONE
MODEL: F675-70 DWG. NO. Z-6-F675	



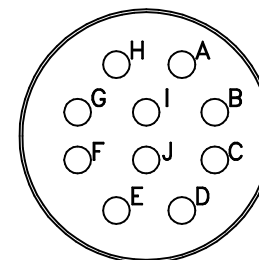
9-PIN SUB "D"  
BACK VIEW



9-PIN SUB "D"  
CONNECTOR  
(C0604)  
DUST CAP  
(C1126)

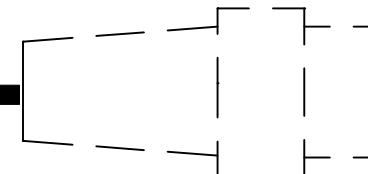
- PIN 1 - BLACK (GND)  
 PIN 2 - WHITE (GAME CLOCK RESET)  
 PIN 3 -  
 PIN 4 - ORANGE (FIELD TIMER RUN)  
 PIN 5 - GREEN (GND)  
 PIN 6 - RED (GAME CLOCK RUN)  
 PIN 7 -  
 PIN 8 -  
 PIN 9 - BLUE (FIELD TIMER RESET)

- PIN A - GAME CLOCK RUN - RED  
 PIN B - GAME CLOCK RESET - WHITE  
 PIN C - FIELD TIMER RUN - ORANGE  
 PIN D - FIELD TIMER RESET - BLUE  
 PIN G - (GND) - BLACK  
 PIN H - (GND) - GREEN



3107-18-1S  
FRONT VIEW

(10') 8 CDR #24 (C0520)



3107-18-1S  
(C0072-CL)

TO CONTROL  
9-PIN SUB "D" CONNECTOR

TO 4 X 4 HOOK-UP BOX  
10-PIN AMPHENOL CONNECTOR

**TRANS·LUX**  
*Fair-Play*

1700 DELAWARE AVE.  
 DES MOINES, IA 50317

THIS DOCUMENT CONTAINS FAIR-PLAY PROPRIETARY INFORMATION. ANY DISCLOSURE, USE OR DUPLICATION OF THE DOCUMENT OR OF ANY INFORMATION CONTAINED THEREIN FOR OTHER THAN THE SPECIFIC PURPOSE FOR WHICH IT WAS DISCLOSED IS EXPRESSLY PROHIBITED, EXCEPT AS MAY BE OTHERWISE AGREED TO IN WRITING

TITLE  PRESSBOX HOOK-UP FOR MODELS F675-70 SIDELINE HANDSWITCHES	DRAWN BY BEW	A	MODEL:  F675-70
	DATE 08-28-00		DWG. NO.  N-6-F675-1
	SCALE NONE		

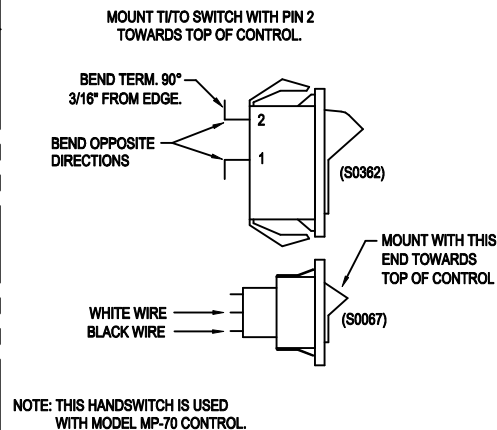
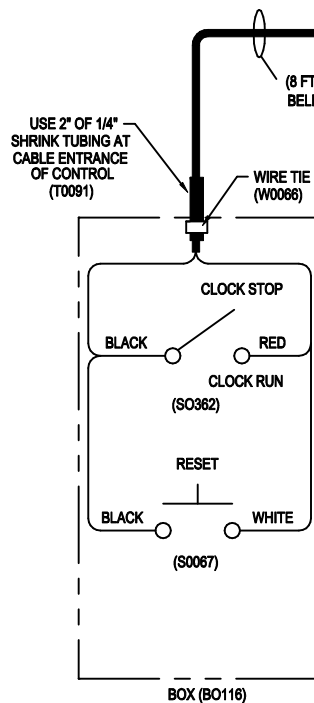


**HC-70 GAME CLOCK RESET HAND SWITCH  
USED WITH MP-70  
INSTRUCTION MANUAL**

**TABLE OF CONTENTS**

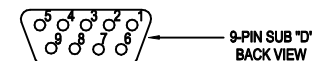
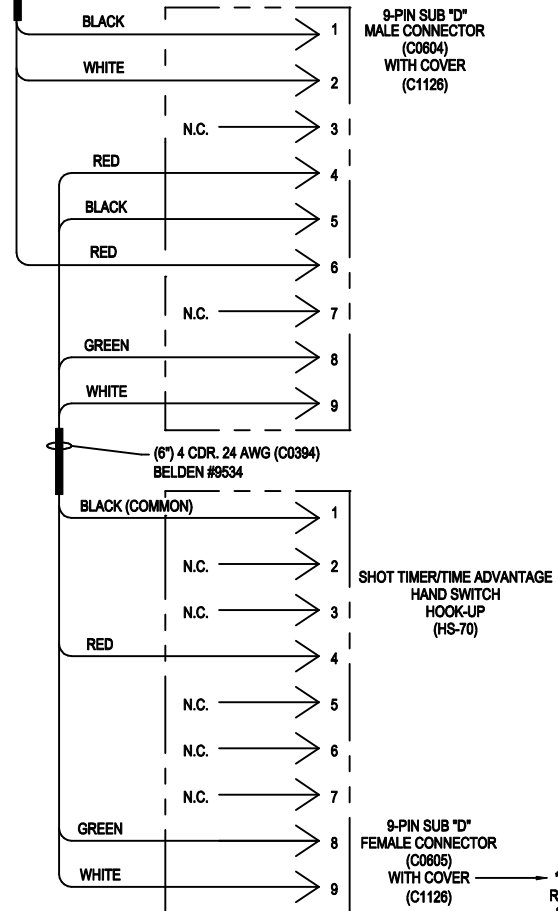
<b>DESCRIPTION</b>	<b>DRAWING NUMBER</b>
HC-70 CLOCK HAND SWITCH WIRING & ASSEMBLY.....	Z-6-F100-6
HC-70 CLOCK HAND SWITCH COVERLAY DETAILS.....	Z-8-F100-3 (REFER TO 4615-ST2 SECTION)





CLOCK HANDSWITCH  
MODEL: HC-70  
CODE: H99  
COVERLAY: L0797

NOTE: REF. Z-7-F100-1 FOR BOX DIMENSIONS  
REF. Z-8-F100-1 FOR LABEL LOCATIONS  
REF. Z-8-F100-3 FOR COVERLAY DETAILS



\* ON THIS COVER ONLY  
REMOVE THUMB SCREWS  
& USE SCREWLOCK KIT  
(C0911)

<b>Fair-Play</b> A <b>TEK-LUX</b> Company 1700 DELAWARE AVE. DES MOINES, IA 50317		THIS DOCUMENT CONTAINS FAIR-PLAY PROPRIETARY INFORMATION. ANY DISCLOSURE, USE OR DUPLICATION OF THE DOCUMENT OR OF ANY INFORMATION CONTAINED THEREIN FOR OTHER THAN THE SPECIFIC PURPOSE FOR WHICH IT WAS DISCLOSED IS EXPRESSLY PROHIBITED, EXCEPT AS MAY BE OTHERWISE AGREED TO IN WRITING.	
TITLE CLOCK HANDSWITCH WIRING & ASSEMBLY MODEL: HC-70		DRAWN BY BEW DATE 09-24-99 SCALE NONE	MODEL: B HC-70 DWG. NO. Z-6-F100-6

REVISION 1. ADD GREEN WIRE ON SUB-D CONNECTOR 5/04/00 MEB

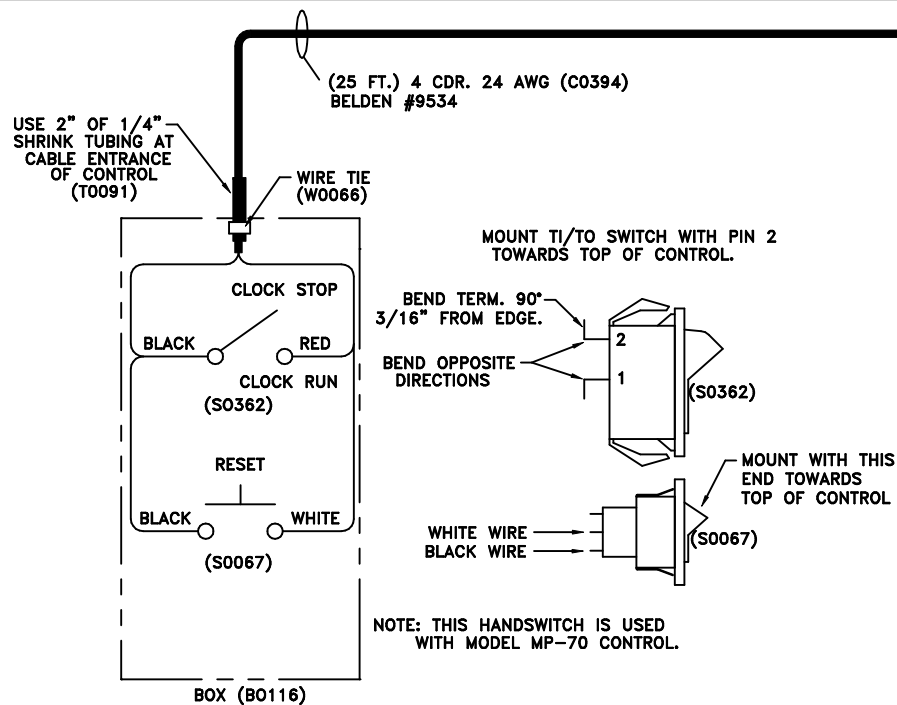
ITEM	CHANGE	DATE	BY
------	--------	------	----



**HC-70-1 GAME CLOCK RESET HAND SWITCH  
USED WITH MP-70 WITH 25'-0" CABLE  
INSTRUCTION MANUAL**

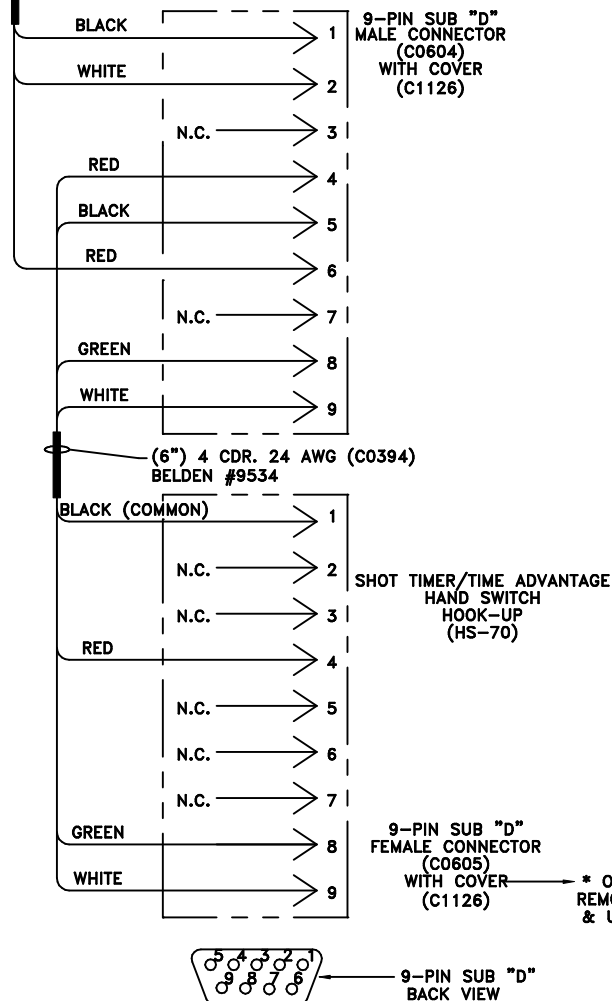
**TABLE OF CONTENTS**

<b>DESCRIPTION</b>	<b>DRAWING NUMBER</b>
HC-70-1 CLOCK HAND SWITCH WIRING & ASSEMBLY .....	Z-6-F100-10
HC-70-1 CLOCK HAND SWITCH COVERLAY DETAILS.....	Z-8-F100-3 (REFER TO 4615-ST2 SECTION)



**CLOCK HANDSWITCH**  
 MODEL: HC-70-1  
 CODE: H99  
 COVERLAY: L0797

NOTE: REF. Z-7-F100-1 FOR BOX DIMENSIONS  
 REF. Z-8-F100-1 FOR LABEL LOCATIONS  
 REF. Z-8-F100-3 FOR COVERLAY DETAILS



<b>TRANS-LUX</b> <i>Fair-Play</i> 1700 DELAWARE AVE. DES MOINES, IA 50317		THIS DOCUMENT CONTAINS FAIR-PLAY PROPRIETARY INFORMATION. ANY DISCLOSURE, USE OR DUPLICATION OF THE DOCUMENT OR OF ANY INFORMATION CONTAINED THEREIN FOR OTHER THAN THE SPECIFIC PURPOSE FOR WHICH IT WAS DISCLOSED IS EXPRESSLY PROHIBITED, EXCEPT AS MAY BE OTHERWISE AGREED TO IN WRITING.	
TITLE CLOCK HAND SWITCH WIRING & ASSEMBLY MODEL: HC-70-1		DRAWN BY BEW DATE 03-09-01 SCALE NONE	MODEL: B HC-70-1 DWG. NO. Z-6-F100-10

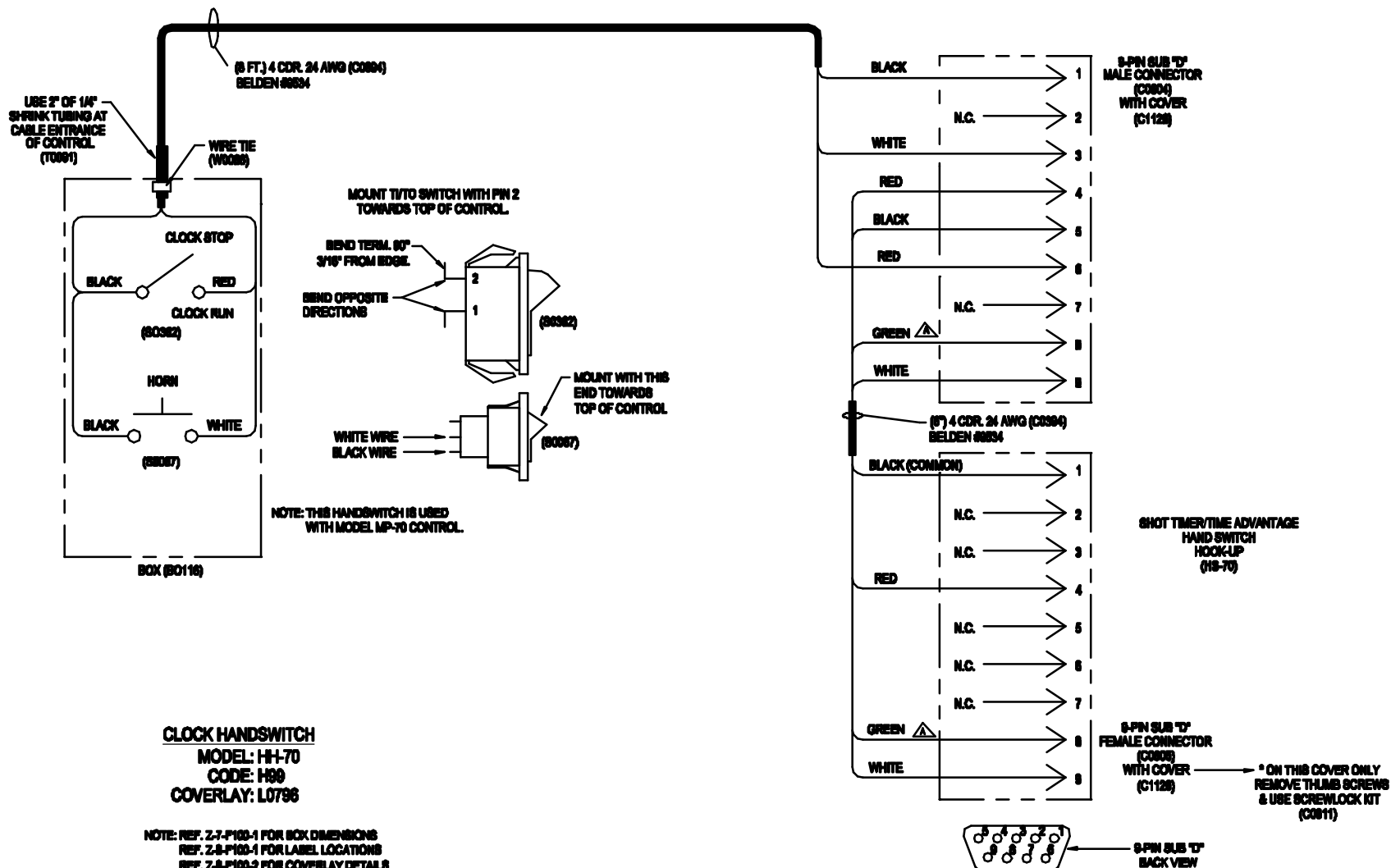
REV. # CHANGE DATE BY



**HH-70 GAME CLOCK & HORN HAND SWITCH  
USED WITH MP-70  
INSTRUCTION MANUAL**

TABLE OF CONTENTS

DESCRIPTION	DRAWING NUMBER
HH-70 CLOCK HAND SWITCH WIRING & ASSEMBLY.....	Z-6-F100-8



<b>Fair-Play</b> A <b>TEK-LOG</b> Company 1700 DELAWARE AVE. DES MOINES, IA 50317		THIS DOCUMENT CONTAINS FAIR-PLAY PROPRIETARY INFORMATION. ANY DISCLOSURE, USE OR DUPLICATION OF THE DOCUMENT OR OF ANY INFORMATION CONTAINED THEREIN FOR OTHER THAN THE SPECIFIC PURPOSE FOR WHICH IT WAS DISCLOSED IS EXPRESSLY PROHIBITED, EXCEPT AS MAY BE OTHERWISE AGREED TO IN WRITING.	
		TITLE CLOCK HANDSWITCH WIRING & ASSEMBLY MODEL: HH-70	
DRAWN BY MEB DATE 11-11-99 SCALE NONE		MODEL: B HH-70 DWG. NO. Z-6-F100-B	

ITEM	DESCRIPTION & REVISION	DATE	BY
1	ADDED CONNECTION & BROWN WIRE FOR TIME ADV. TO WORK	11-20-01	NAP
	CHANGE		

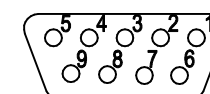
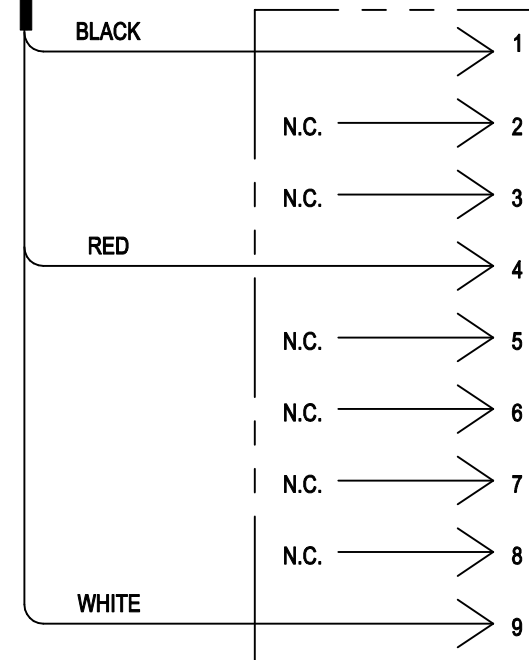


**HS-70 SHOT TIMER HAND SWITCH  
USED WITH MP-70  
INSTRUCTION MANUAL**

TABLE OF CONTENTS

DESCRIPTION	DRAWING NUMBER
HS-70 SHOT TIMER HAND SWITCH WIRING & ASSEMBLY.....	Z-6-F100-7
HS-70 SHOT TIMER HAND SWITCH COVERLAY DETAILS.....	Z-8-F100-3 (REFER TO 4615-ST2 SECTION)

9-PIN SUB "D"  
MALE CONNECTOR  
(C0604)  
WITH COVER  
(C1126)

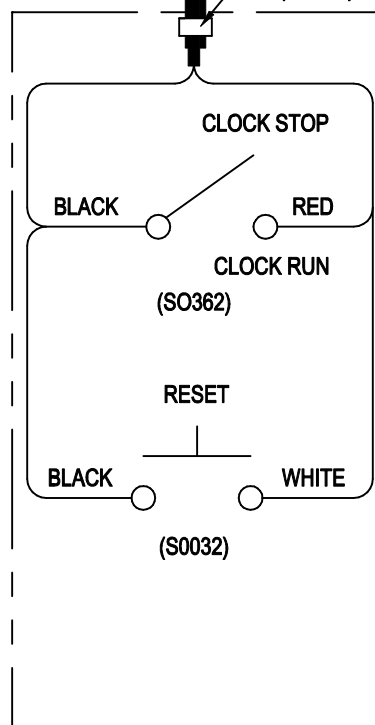


9-PIN SUB "D"  
BACK VIEW

(8 FT.) 4 CDR. 24 AWG (C0394)  
BELDEN #9534

USE 2" OF 1/4"  
SHRINK TUBING AT  
CABLE ENTRANCE  
OF CONTROL  
(T0091)

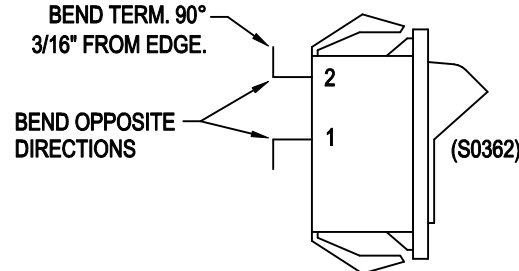
WIRE TIE  
(W0066)



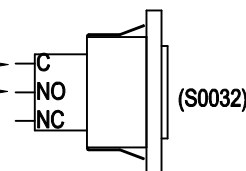
BOX (B0116)

BEND TERM. 90°  
3/16" FROM EDGE.

BEND OPPOSITE  
DIRECTIONS



BLACK WIRE  
WHITE WIRE



# CLOCK HANDSWITCH

MODEL: HS-70

CODE: H99

COVERLAY: L0797

NOTE: REF. Z-7-F100-1 FOR BOX DETAILS  
REF. Z-8-F100-1 FOR LABEL LOCATIONS  
REF. Z-8-F100-3 FOR COVERLAY DETAILS

NOTE: MODEL HS-70 USED ONLY WITH MODEL MP-70 SERIES CONTROL.

**Fair-Play**

A **TRANS-LUX** Company

1700 DELAWARE AVE.  
DES MOINES, IA 50317

THIS DOCUMENT CONTAINS FAIR-PLAY PROPRIETARY INFORMATION. ANY DISCLOSURE, USE OR DUPLICATION OF THE DOCUMENT OR OF ANY INFORMATION CONTAINED THEREIN FOR OTHER THAN THE SPECIFIC PURPOSE FOR WHICH IT WAS DISCLOSED IS EXPRESSLY PROHIBITED, EXCEPT AS MAY BE OTHERWISE AGREED TO IN WRITING

TITLE	DRAWN BY	A	MODEL:
	BEW		
	DATE		
	09-24-99		
SHOT TIMER HAND SWITCH WIRING & ASSEMBLY MODEL: HS-70	SCALE	DWG. NO.	Z-6-F100-7
	NONE		

ITEM	CHANGE	DATE	BY
------	--------	------	----

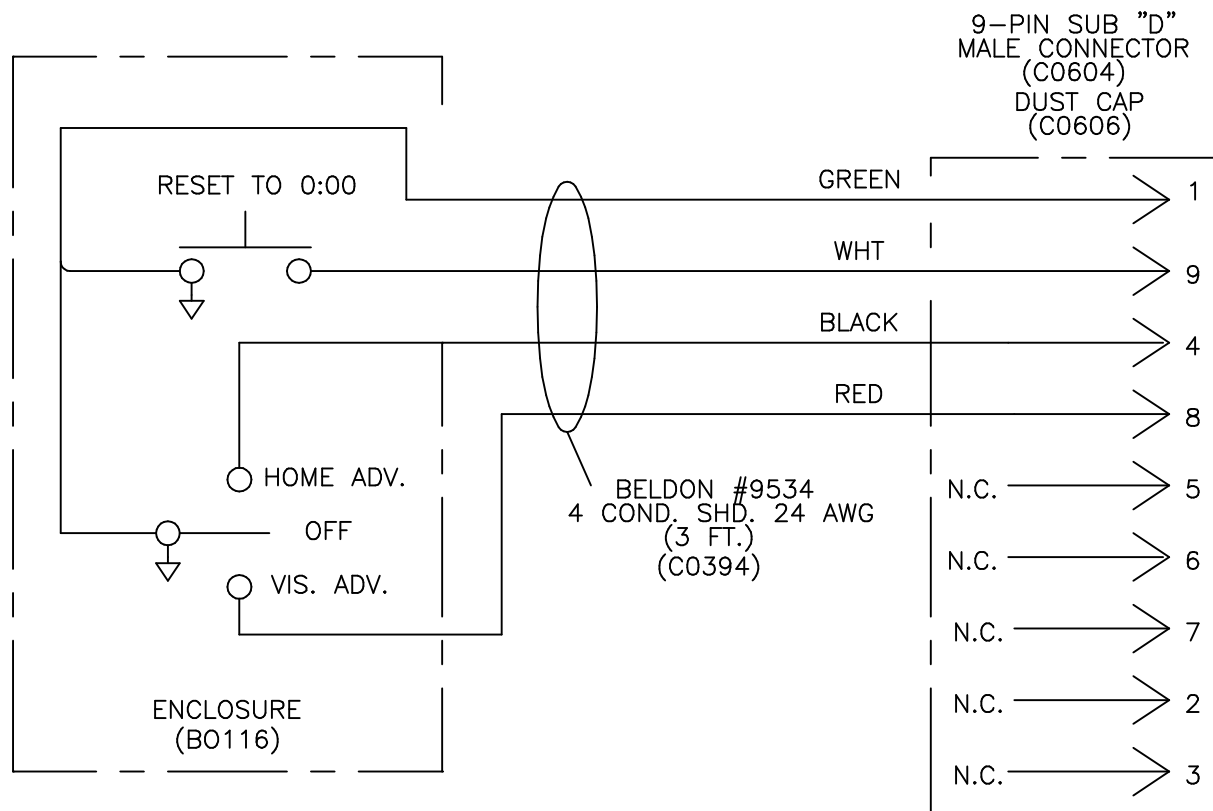


**TA-70 TIME ADVANTAGE HAND SWITCH  
USED WITH MP-70  
INSTRUCTION MANUAL**

TABLE OF CONTENTS

DESCRIPTION	DRAWING NUMBER
TA-70 HAND SWITCH WIRING.....	Z-6-B193-3

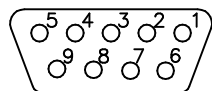




# TIME ADVANTAGE HANDSWITCH

MODEL: TA-70

CODE: J00



9-PIN SUB "D"  
(C0604)  
BACK VIEW

NOTE: USE CONNECTOR FP# C0604  
& COVER FP# C0606.

NOTE: REF. Z-5-B193 FOR CLK. HANDSWITCH ASSEMBLY

**TRANS·LUX**  
*Fair-Play*

1700 DELAWARE AVE.  
DES MOINES, IA 50317

THIS DOCUMENT CONTAINS FAIR-PLAY PROPRIETARY INFORMATION. ANY DISCLOSURE, USE OR DUPLICATION OF THE DOCUMENT OR OF ANY INFORMATION CONTAINED THEREIN FOR OTHER THAN THE SPECIFIC PURPOSE FOR WHICH IT WAS DISCLOSED IS EXPRESSLY PROHIBITED, EXCEPT AS MAY BE OTHERWISE AGREED TO IN WRITING

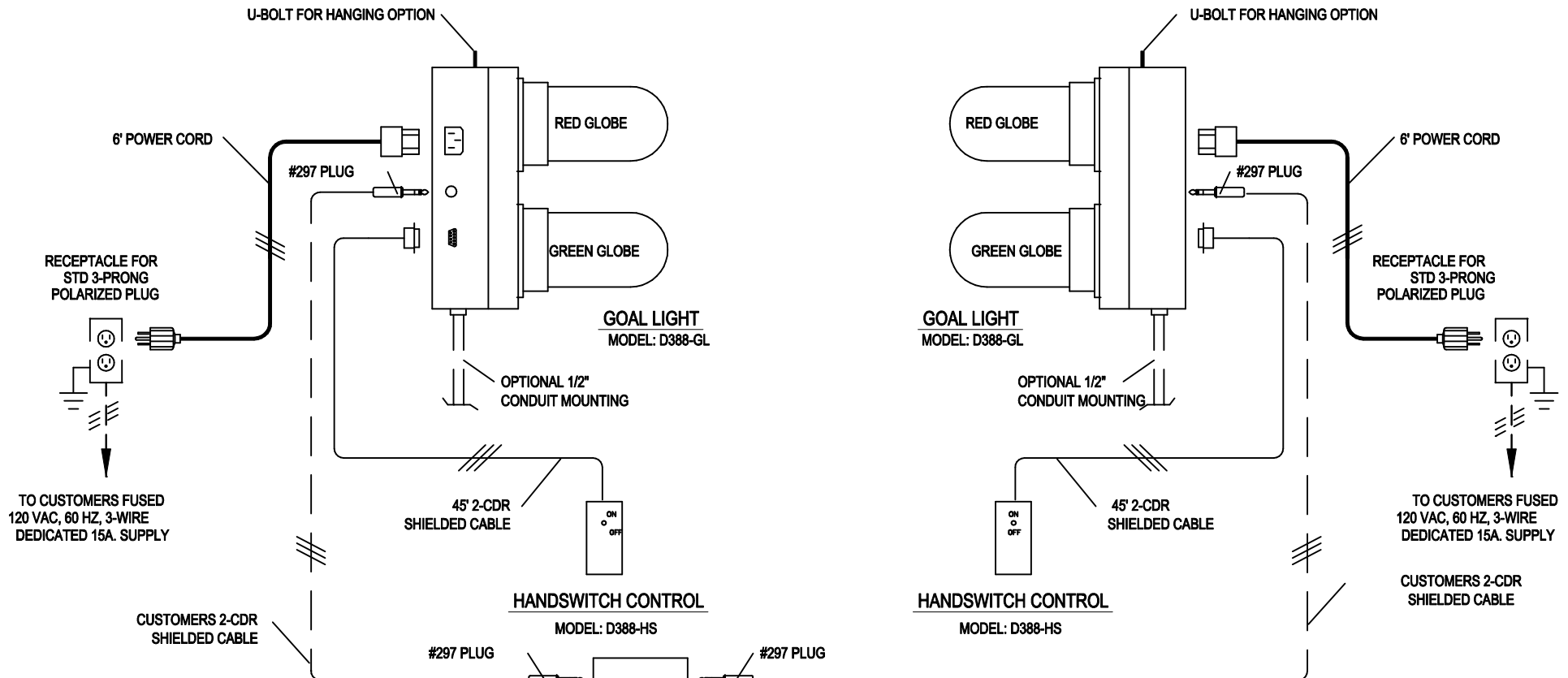
TITLE  TIME ADVANTAGE HAND SWITCH WIRING MODEL: TA-70	DRAWN BY BEW	A	MODEL:  TA-70
	DATE 10-12-00		
	SCALE NONE	DWG. NO. Z-6-B193-3	



## D388 HOCKEY GOAL LIGHT SET INSTRUCTION MANUAL

### TABLE OF CONTENTS

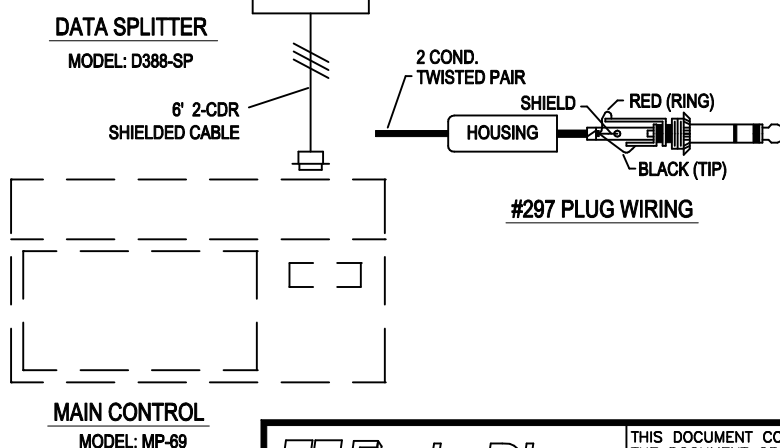
DESCRIPTION	DRAWING NUMBER
D388 INSTALLATION SCHEME FOR HOCKEY GOAL LIGHTS.....	EY-6-D388-1
D388 WIRING FOR HOCKEY GOAL LIGHTS.....	K-6-D388-1



NOTE:  
IF USING A HANDSWITCH WITH THE  
MAIN CONTROL, HANDSWITCH ADAPTOR  
MODEL E091 MUST BE USED.

#### GOAL LIGHT OPERATION

- GREEN LIGHT GOES ON WHEN CLOCK IS STOPPED.
- RED LIGHT (GOAL) CAN BE TURNED ON ANYTIME THE GREEN LIGHT IS OFF.
- WITH CLOCK STOPPED, GREEN LIGHT & RED LIGHT CANNOT BE TURNED ON.
- IF THE RED LIGHT IS ON WHEN THE CLOCK IS STOPPED, & THE GREEN LIGHT COMES ON, THE RED LIGHT WILL REMAIN ON UNTILL TURNED OFF BY THE HAND SWITCH.



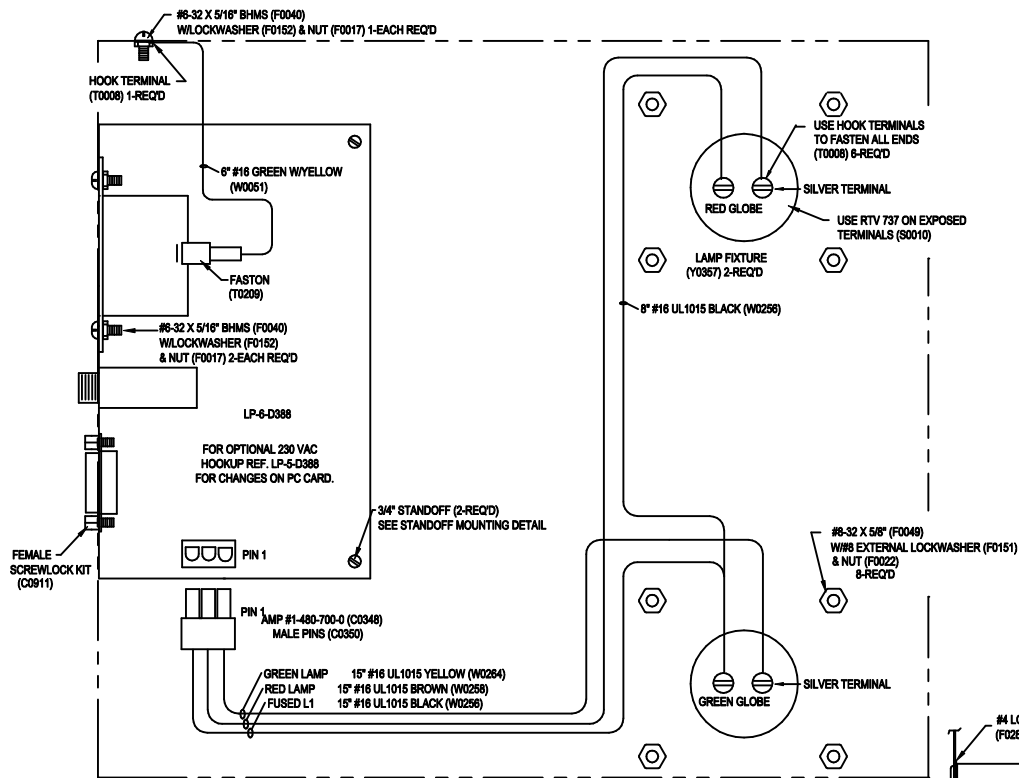
PARTS LIST			
ITEM	QTY	DESCRIPTION	F.P. NO.
1	2	HOCKEY GOAL LIGHT	D388-GL
2	2	HANDSWITCH W/45' CABLE	D388-HS
3	1	DATA SPLITTER BOX	D388-SP
4	2	6' POWER CORD	C0076
5	4	#297 PLUG	C0483
6	( )'	2 CDR. SHIELDED CABLE	C0550

**Fair-Play**  
A **TRANS-LUX** Company  
1700 DELAWARE AVE.  
DES MOINES, IA 50317

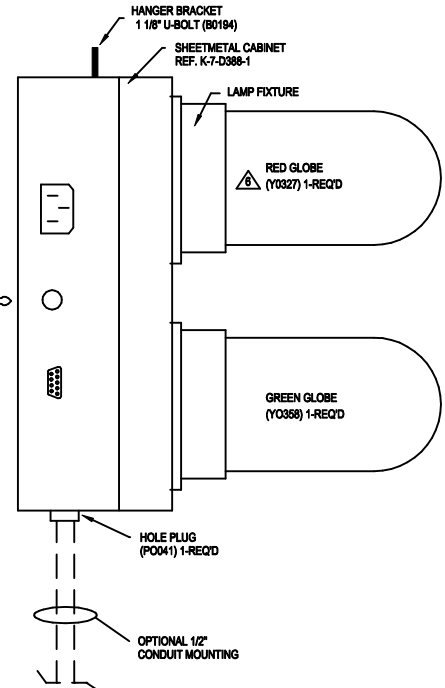
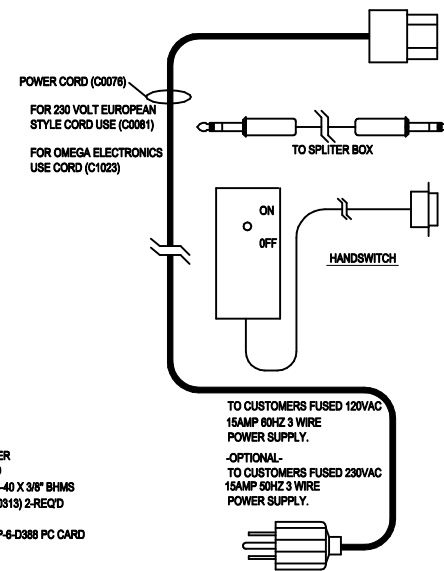
THIS DOCUMENT CONTAINS FAIR-PLAY PROPRIETARY INFORMATION. ANY DISCLOSURE, USE OR DUPLICATION OF THE DOCUMENT OR OF ANY INFORMATION CONTAINED THEREIN FOR OTHER THAN THE SPECIFIC PURPOSE FOR WHICH IT WAS DISCLOSED IS EXPRESSLY PROHIBITED, EXCEPT AS MAY BE OTHERWISE AGREED TO IN WRITING

TITLE INSTALLATION SCHEME HOCKEY GOAL LIGHTS MODEL: D388	DRAWN BY MEB	A	MODEL: D388
	DATE 10-06-95		
	SCALE NONE	DWG. NO. EY-6-D388-1	

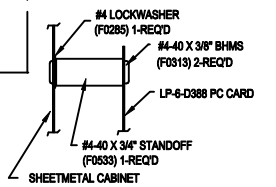
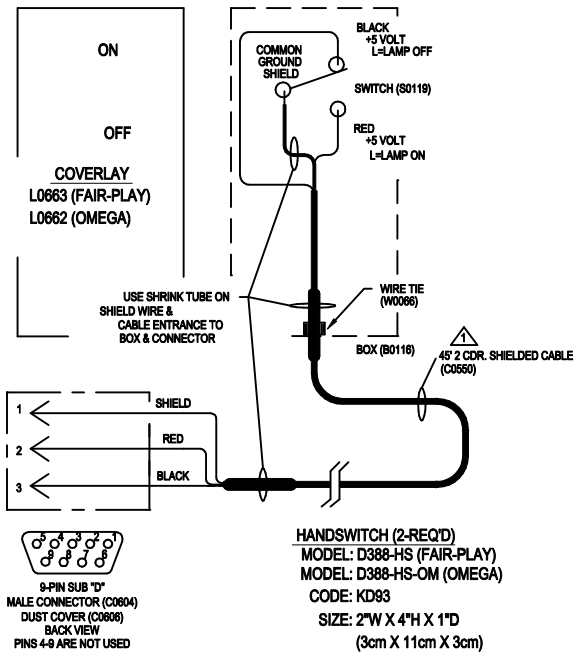
ITEM	CHANGE	DATE	BY
------	--------	------	----



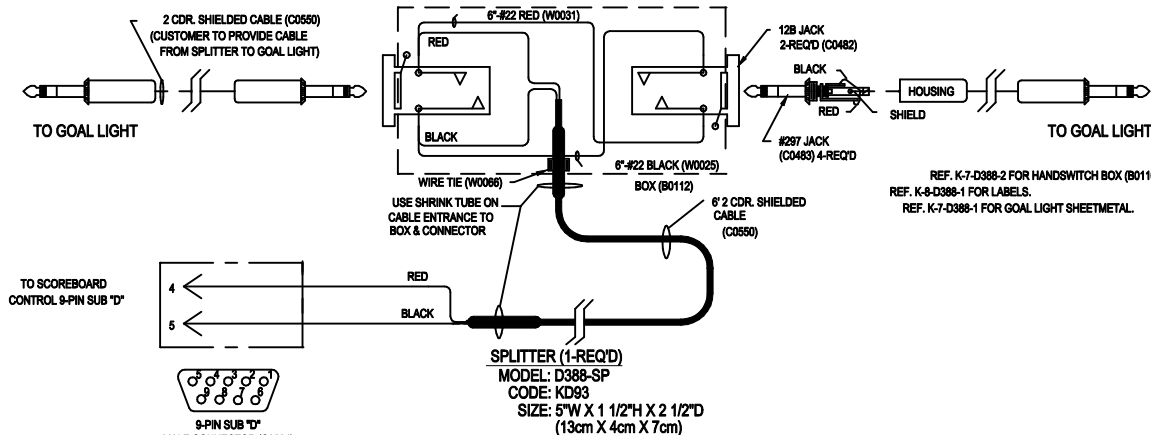
**HOCKEY GOAL LIGHT SET**  
**MODEL: D388 (115VAC OPERATION)**  
**D388-230 (230VAC OPERATION)**  
**CODE: KD93**  
**VOLTS: 115VAC (230VAC OPTIONAL)**  
**HZ: 50/60**  
**WATTS: 200**  
**LAMPS: 60WA19 115VAC (L0059) (100W MAX.)**  
**60WA19 230VAC (L0664) (100W MAX.)**



**GOAL LIGHTS (2-REQ'D)**  
**MODEL: D388-GL (115VAC)**  
**D388-230-GL (230VAC)**  
**CODE: KD93**  
**SIZE: 4 1/2\"/>**



**SIDE DETAIL STANDOFF MOUNTING**  
2-REQ'D



REF. K-7-D388-2 FOR HANDSWITCH BOX (B0116 & B0112) DETAILS.  
 REF. K-6-D388-1 FOR LABELS.  
 REF. K-7-D388-1 FOR GOAL LIGHT SHEETMETAL.

ITEM	CHANGE	DATE	BY
1	CHANGE FROM #Y0350 TO #Y0327	08-03-97	BEV
2	CHANGE #18 WIRE TO #16 WIRE	08-14-95	BET
3	PART NO. FROM W0285 TO W0284	08-14-95	BET
4	PART NO. FROM W0287 TO W0286	08-14-95	BET
5	PART NO. FROM W0286 TO W0285	08-14-95	BET
6	D388-HS CABLE LENGTH TO 49"	10-10-94	MEB

**Fair-Play**  
 A **FAIR-PLAY** Company  
 1700 DELAWARE AVE.  
 DES MOINES, IA 50317

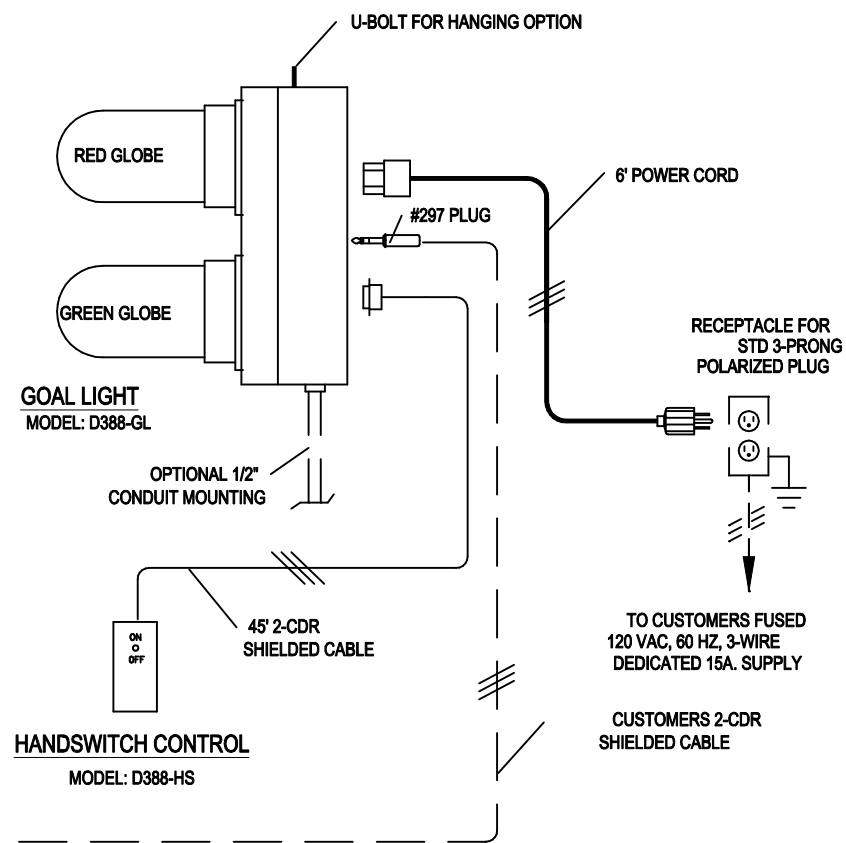
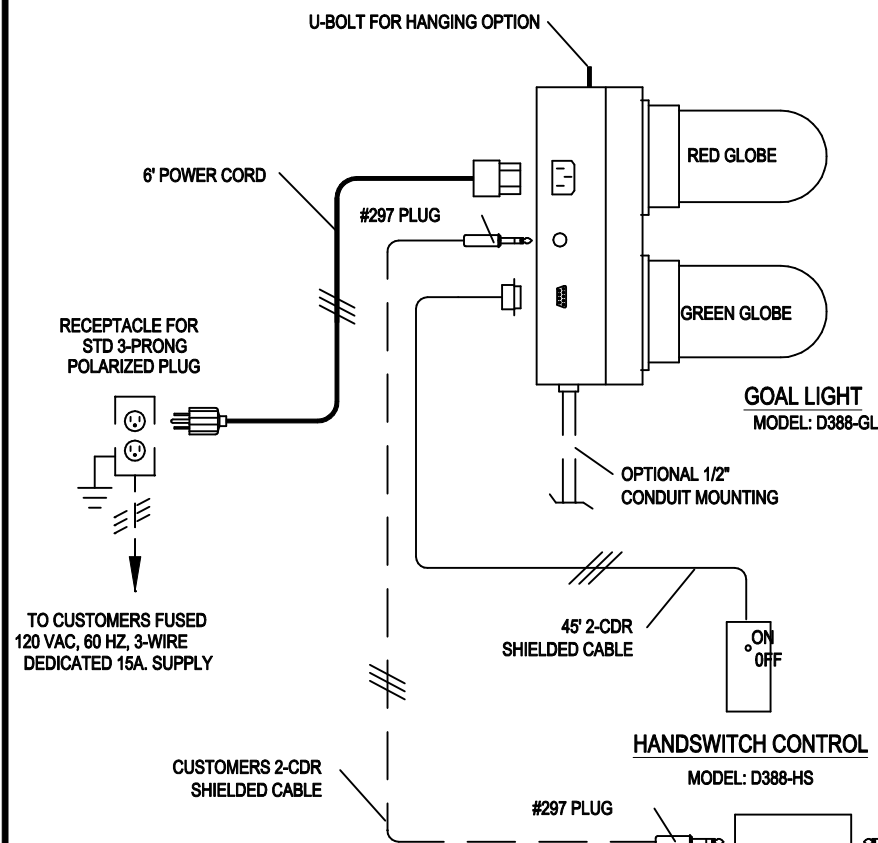
THIS DOCUMENT CONTAINS FAIR-PLAY PROPRIETARY INFORMATION. ANY DISCLOSURE, USE OR DUPLICATION OF THE DOCUMENT OR OF ANY INFORMATION CONTAINED THEREIN FOR OTHER THAN THE SPECIFIC PURPOSE FOR WHICH IT WAS DISCLOSED IS EXPRESSLY PROHIBITED, EXCEPT AS MAY BE OTHERWISE AGREED TO IN WRITING.	
TITLE	WIRING FOR HOCKEY GOAL LIGHTS MODEL: D388
DRAWN BY	MEB
DATE	11-04-93
SCALE	NONE
MODEL	D388
DWG. NO.	K-6-D388-1



**D388-70 HOCKEY GOAL LIGHT SET  
USED WITH MP-70  
INSTRUCTION MANUAL**

TABLE OF CONTENTS

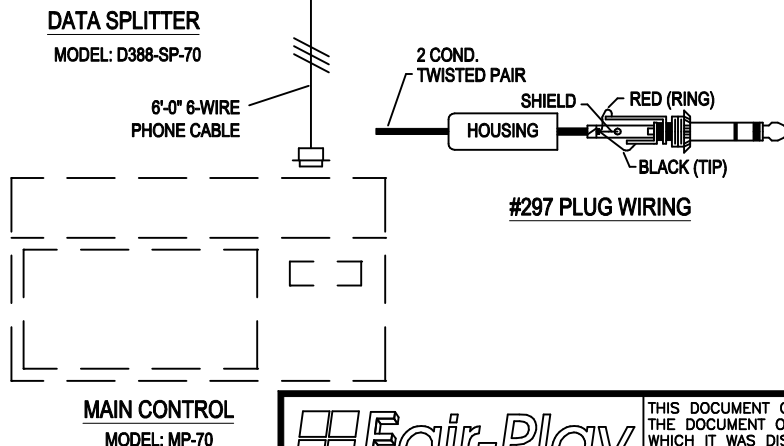
<b>DESCRIPTION</b>	<b>DRAWING NUMBER</b>
D388-70 INSTALLATION SCHEME FOR HOCKEY GOAL LIGHTS.....	EY-6-D388-2
D388-70 WIRING FOR HOCKEY GOAL LIGHTS.....	K-6-D388-2



NOTE:  
IF USING A HANDSWITCH WITH THE  
MAIN CONTROL, HANDSWITCH ADAPTOR  
MODEL E091 MUST BE USED.

### GOAL LIGHT OPERATION

- GREEN LIGHT GOES ON WHEN CLOCK IS STOPPED.
- RED LIGHT (GOAL) CAN BE TURNED ON ANYTIME THE GREEN LIGHT IS OFF.
- WITH CLOCK STOPPED, GREEN LIGHT & RED LIGHT CANNOT BE TURNED ON.
- IF THE RED LIGHT IS ON WHEN THE CLOCK IS STOPPED, & THE GREEN LIGHT COMES ON, THE RED LIGHT WILL REMAIN ON UNTILL TURNED OFF BY THE HAND SWITCH.



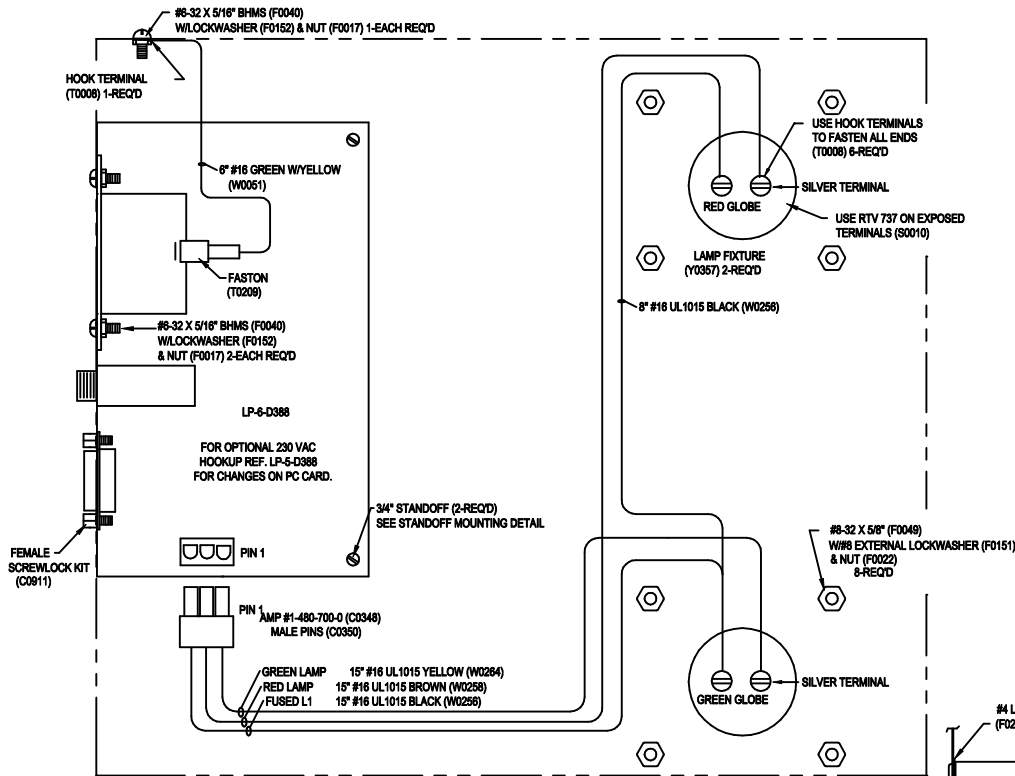
PARTS LIST			
ITEM	QTY	DESCRIPTION	F.P. NO.
1	2	HOCKEY GOAL LIGHT	D388-GL
2	2	HANDSWITCH W/45' CABLE	D388-HS
3	1	DATA SPLITTER BOX	D388-SP-70
4	2	6' POWER CORD	C0076
5	4	#297 PLUG	C0483
6	( )'	2 CDR. SHIELDED CABLE	C0550

ITEM	CHANGE	DATE	BY
------	--------	------	----

**Fair-Play**  
A **TRANS-LUX** Company  
1700 DELAWARE AVE.  
DES MOINES, IA 50317

THIS DOCUMENT CONTAINS FAIR-PLAY PROPRIETARY INFORMATION. ANY DISCLOSURE, USE OR DUPLICATION OF THE DOCUMENT OR OF ANY INFORMATION CONTAINED THEREIN FOR OTHER THAN THE SPECIFIC PURPOSE FOR WHICH IT WAS DISCLOSED IS EXPRESSLY PROHIBITED, EXCEPT AS MAY BE OTHERWISE AGREED TO IN WRITING

TITLE  INSTALLATION SCHEME HOCKEY GOAL LIGHTS MODEL D388-70	DRAWN BY BEW	A	MODEL:  D388-70
	DATE 10-06-99		
	SCALE NONE	DWG. NO. EY-6-D388-2	

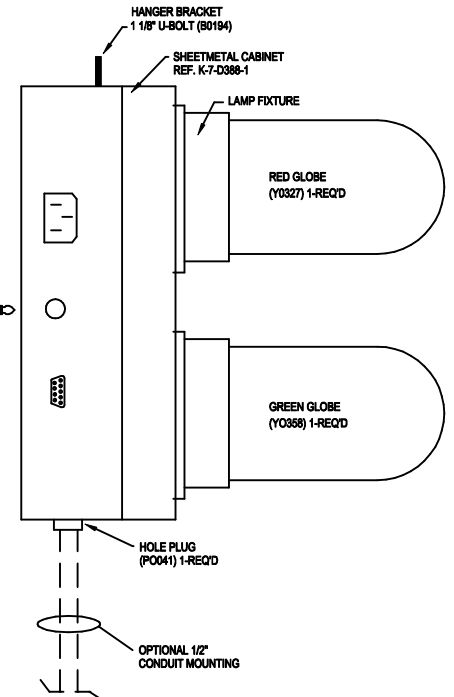
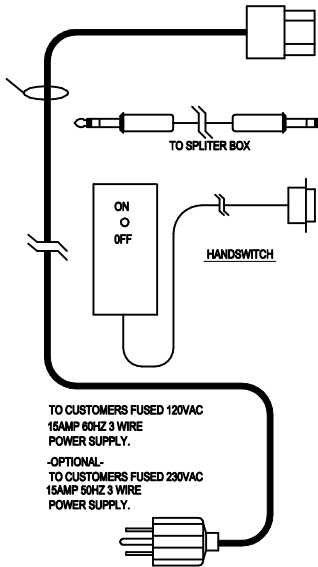


# **HOCKEY GOAL LIGHT SET**

MODEL: D388-70 (115VAC OPERATION)  
D388-70-230 (230VAC OPERATION)  
CODE: JA99  
VOLTS: 115VAC (230VAC OPTIONAL)  
HZ: 50/60  
WATTS: 200  
LAMPS: 60WA19 115VAC (L0059) (100W MAX.)  
60WA19 230VAC (L0664) (100W MAX.)

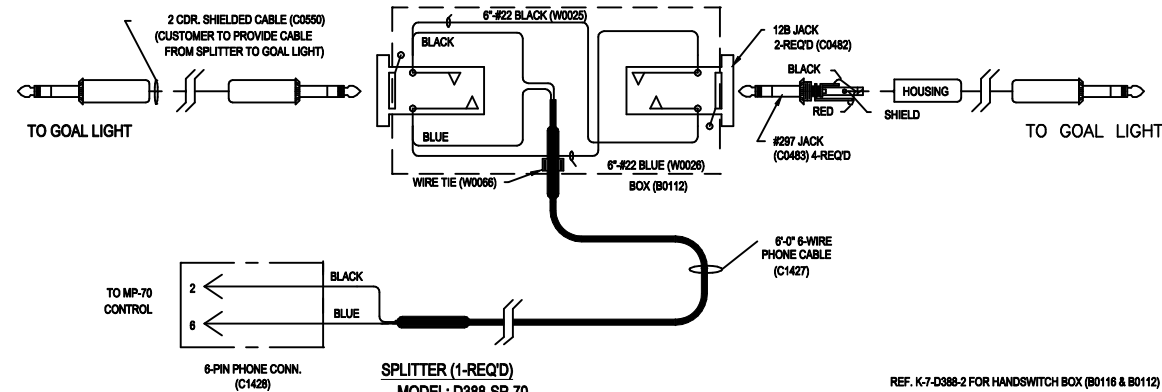
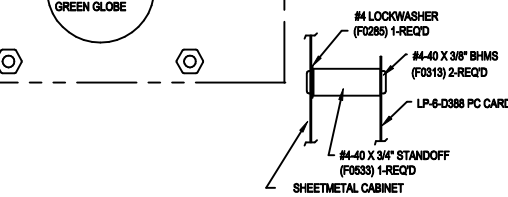
## **POWER CORD (C0076)**

FOR 230 VOLT EUROPEAN STYLE CORD USE (C0081)  
FOR OMEGA ELECTRONICS USE CORD (C1023)



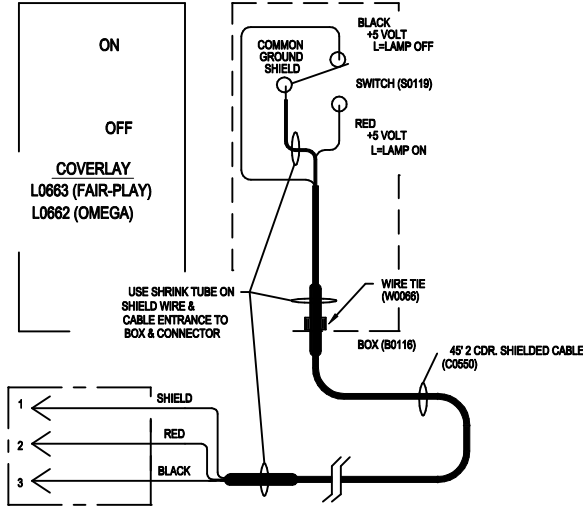
**GOAL LIGHTS (2-REQ'D)**  
MODEL: D388-GL (115VAC)  
D388-230-GL (230VAC)  
CODE: KD93  
SIZE: 4 1/2"W X 10 1/2"H X 10"D  
(11.43cm X 26.67cm X 25.4cm)  
WEIGHT: 4LBS

## **SIDE DETAIL STANDOFF MOUNTING 2-REQ'D**



**SPLITTER (1-REQ'D)**  
MODEL: D388-SP-70  
CODE: JA99  
SIZE: 5"W X 1 1/2"H X 2 1/2"D  
(13cm X 4cm X 7cm)

**HANDSWITCH (2-REQ'D)**  
MODEL: D388-HS (FAIR-PLAY)  
MODEL: D388-HS-OM (OMEGA)  
CODE: KD93  
SIZE: 2"W X 4"H X 1"D  
(3cm X 11cm X 3cm)



REF. K-7-D388-2 FOR HANDSWITCH BOX (B0116 & B0112) DETAILS.  
REF. K-6-D388-1 FOR LABELS.  
REF. K-7-D388-1 FOR GOAL LIGHT SHEETMETAL.

<b>Fair-Play</b> A Fair-Play Company 1700 DELAWARE AVE. DES MOINES, IA 50317		THIS DOCUMENT CONTAINS FAIR-PLAY PROPRIETARY INFORMATION. ANY DISCLOSURE, USE OR DUPLICATION OF THE DOCUMENT OR OF ANY INFORMATION CONTAINED THEREIN FOR OTHER THAN THE SPECIFIC PURPOSE FOR WHICH IT WAS DISCLOSED IS EXPRESSLY PROHIBITED, EXCEPT AS MAY BE OTHERWISE AGREED TO IN WRITING.
TITLE	WIRING FOR HOCKEY GOAL LIGHT MODEL: D388-70	DRAWN BY DATE 10-06-99 SCALE NONE
C	MODEL: D388-70	DWG. NO. K-6-D388-2



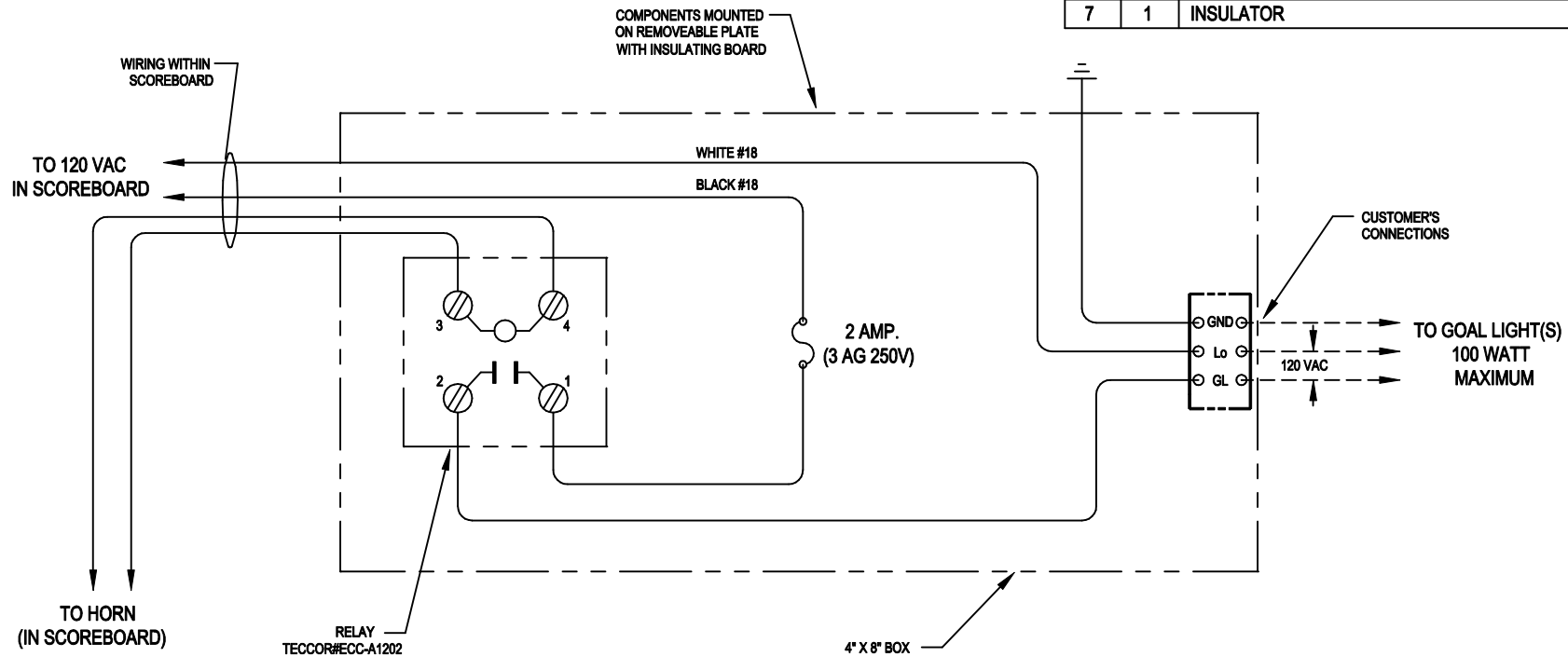
**BB-6000-GL BOX RELAY GOAL LIGHTS  
INSTRUCTION MANUAL**

TABLE OF CONTENTS

DESCRIPTION	DRAWING NUMBER
BB-6000-GL AUXILIARY SIGNAL CIRCUIT WIRING.....	N-6-3100



ITEM	QTY	PARTS	F.P. NO.
1	1	S.S. RELAY A12102A	R0012
2	1	FUSE HOLDER	F0272
3	1	FUSE 2A. 3AG	F0142
4	3	TERM BLOCK	T0135
5	1	TERM BLOCK END	T0069
6	1	PARTS MTG PLATE	N-7-4261
7	1	INSULATOR	N-7-4261



## OPERATIONS

GOAL LIGHTS (OR OTHER AUXILIARY SIGNAL) WILL ILLUMINATE AUTOMATICALLY WHENEVER SCOREBOARD HORN IS SOUNDED.

## NOTE

LABEL ON TOP OF BOX TO READ:  
"FOR GOAL LIGHTS 100 WATT MAX."

MODEL: BB-6000-GL  
CODE: JD80

RENAME TO MODEL BB-6000-GL	03-07-98	BEW
CHANGE	DATE	BY

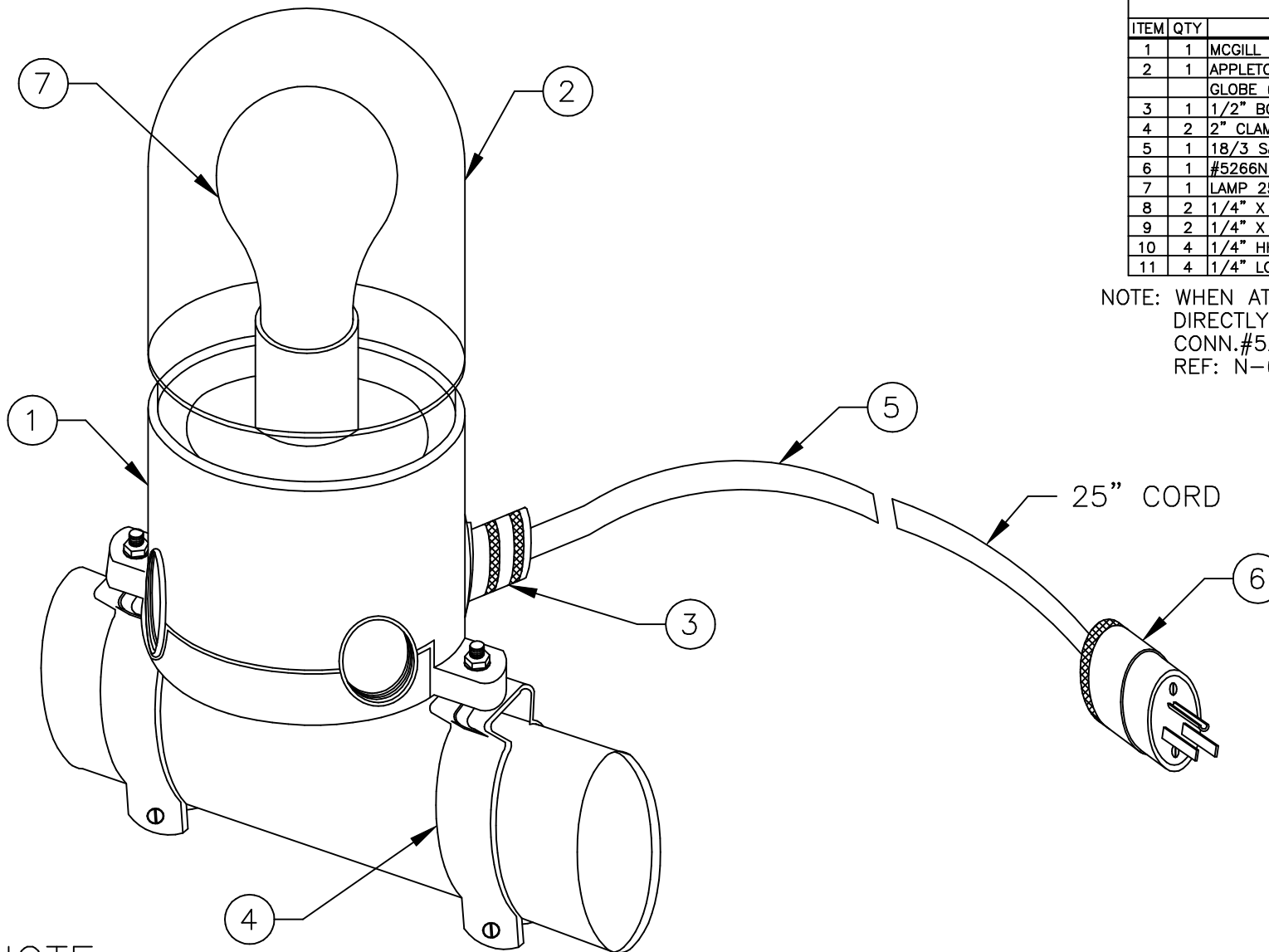
<b>Fair-Play</b> A <b>TESS-LO</b> Company 1700 DELAWARE AVE. DES MOINES, IA 50317	THIS DOCUMENT CONTAINS FAIR-PLAY PROPRIETARY INFORMATION. ANY DISCLOSURE, USE OR DUPLICATION OF THE DOCUMENT OR OF ANY INFORMATION CONTAINED THEREIN FOR OTHER THAN THE SPECIFIC PURPOSE FOR WHICH IT WAS DISCLOSED IS EXPRESSLY PROHIBITED, EXCEPT AS MAY BE OTHERWISE AGREED TO IN WRITING.	
	TITLE	MODEL:
	AUXILIARY SIGNAL (GOAL LIGHTS)	BB-6000-GL
	CIRCUIT FOR 6000 SERIES	DWG. NO.
MODEL: BB-6000-GL	SCALE NONE	N-6-3100



**GL-612 BASKETBALL GOAL LIGHT  
INSTRUCTION MANUAL**

**TABLE OF CONTENTS**

<b>DESCRIPTION</b>	<b>DRAWING NUMBER</b>
GL-612 BASKETBALL GOAL LIGHT ASSEMBLY.....	H-5-A360



## PARTS LIST

ITEM	QTY	DESCRIPTION	F.P. NO.
1	1	MCGILL #610 LIGHT FIXTURE	Y0326
2	1	APPLETON VPG-IRE POLYCARBONATE GLOBE (RED)	Y0327
3	1	1/2" BOX CONN. # 3302	C0185
4	2	2" CLAMP #TW-CL200	C0400
5	1	18/3 SJ CORD 25'	C0073
6	1	#5266N 3 WIRE CAP	C0100
7	1	LAMP 25A19/IF	L0015
8	2	1/4" X 1" MACHINE SCREW	F0311
9	2	1/4" X 1 1/2" MACHINE SCREW	F0221
10	4	1/4" HH NUT	F0134
11	4	1/4" LOCK WASHER	F0089

NOTE: WHEN ATTACHING GOAL LIGHTS DIRECTLY TO SCBD., ELIMINATE CONN.#5266N.  
REF: N-6-3100 FOR WIRING.

## NOTE:

1. 100 WATT LAMP MAXIMUM.
2. QTY'S ARE FOR (1) GOAL LIGHT ONLY, 2 GOAL LIGHTS ARE REQ'D.

**Fair-Play**

A **TRANS-LUX** Company

1700 DELAWARE AVE.  
DES MOINES, IA 50317

THIS DOCUMENT CONTAINS FAIR-PLAY PROPRIETARY INFORMATION. ANY DISCLOSURE, USE OR DUPLICATION OF THE DOCUMENT OR OF ANY INFORMATION CONTAINED THEREIN FOR OTHER THAN THE SPECIFIC PURPOSE FOR WHICH IT WAS DISCLOSED IS EXPRESSLY PROHIBITED, EXCEPT AS MAY BE OTHERWISE AGREED TO IN WRITING

TITLE GOAL LIGHT ASS'Y MODEL GL-612	DRAWN BY TAS	A MODEL: DWG. NO. H-5-A360
	DATE 3-5-90	
	SCALE 1/4"=1"	

1	UPDATED TO CAD	9-29-95	SEH
ITEM	CHANGE	DATE	BY



**TRANS-LUX MIDWEST CORPORATION**  
**d.b.a. Fair-Play Scoreboards**

**LIMITED SCOREBOARD WARRANTY**

Fair-Play provides a limited five-year warranty when its permanently mounted scoreboards and scoreboard controllers are operated and maintained according to the owner's instructions furnished with the equipment. Such limited warranty is two years for portable scoreboards. This warranty covers all electronic components, including LEDs, for five or two years as applicable from the date of invoice that prove to be defective in material or workmanship. Our #161 and #655-type indoor lamps are warranted on a ten-year factory exchange basis from the date of invoice.

Warranted for one year are mechanical control panel switches, connectors, horns and visual goal indicators. Wireless control components are warranted for two years. Wireless control devices even if not defective may not function reliably in certain environments or otherwise due to outside causes beyond Seller's control, including but not limited to cell phones or portable computers. In the event it is determined a wireless device during the ninety (90) day period following shipment does not function in accordance with its specification without repeated errors or is otherwise consistently unreliable, and Seller determines repair or replacement thereof is not likely to improve performance, at Purchaser's request, upon return to Seller postage prepaid in like new condition within such time period, Seller's sole obligation shall be to refund the entire purchase price of such device. Thereafter Seller's sole obligation shall be to repair or replace, other non-wireless defective components for the balance of the warranty period without responsibility or liability for claims for unreliable performance not due to defects. Batteries, battery packs and battery recharging equipment are warranted for thirty (30) days, except for defects arising from misuse, abuse, negligence or other exclusions set forth below. In no event will Fair-Play have any obligation for any damage caused by defective batteries, battery packs and battery recharging equipment. Also warranted for 30 days are outdoor portable scoreboard carts.

Fair-Play's sole obligation during the applicable warranty period is to repair or replace any defective items. Defective assemblies or components are to be returned postage prepaid to Fair-Play's service center, after obtaining a return authorization number, for repair or replacement at no cost to the owner during the applicable warranty period. Replacement parts may be either new or like-new. Return shipping costs after repair will be paid by Seller except for overnight, express or special shipping costs which shall be paid by Purchaser. Excluded from this warranty are fuses, major components provided by other manufacturers including, but not limited to, computers, rotating signs, power distribution panels, disconnect switches and components of rear-illuminated or lighted signs. The other manufacturer's warranty will apply to such components. Also excluded from this warranty are electronic signs or message centers and related controls. These items are covered by their own specific warranty. The warranty will be suspended as to units for which the purchaser is in default of payment in accordance with the agreed Terms of Payment. In the event the purchaser remits the full amount due in immediately available funds on a unit for which the warranty was suspended, the warranty will be reinstated for the remaining balance of the original warranty period without allowance for the time period of the suspension. The warranty does not apply to units that have been stolen.

THIS WARRANTY IS IN LIEU OF ALL OTHER WARRANTIES OF SELLER, EXPRESS OR IMPLIED, AND, EXCEPT TO THE EXTENT HEREIN PROVIDED, SELLER DOES NOT MAKE ANY WARRANTY WHATSOEVER INCLUDING, WITHOUT LIMITATION, ANY WARRANTY OF MERCHANTABILITY OR FITNESS FOR ANY PARTICULAR USE OR PURPOSE.

Fair-Play shall not be liable for any incidental, special or consequential damages nor any other loss that may arise in connection with its warranted equipment or any claims under this warranty. (Individual states may have limitations on the length of implied warranties.)

This warranty does not cover shipping damages or problems which result from improper installation of your equipment. (Promptly inspect shipment for visible or concealed damages and report immediately to the delivering carrier.)

Under no circumstances shall this warranty apply if the warranted products have been subject to abuse, misuse, neglect, sabotage, acts of terrorists, negligence, accident, or any casualties or abnormal conditions, including without limitation fire, civil disorders, war, flood, lightning or acts of God. Nor does this warranty cover labor or damage resulting from, or problems caused by, any repair, alteration, modification, or adjustment of the warranted scoreboards or components not performed by Fair-Play.

This warranty extends only to the original end-user purchaser of the warranted products, and is not transferable. For information on extended warranties contact your Fair-Play dealer. In the event authorized Fair-Play dealers make extensions to or provide additional service for Fair-Play products, Fair-Play assumes no liability therefore other than the specific warranty set forth above in this Limited Warranty.

Trans-Lux Midwest Corporation

Fair-Play Scoreboards - A Division of Trans-Lux Midwest Corporation  
For Service contact the Trans-Lux Help Desk  
1700 Delaware Avenue, Des Moines, Iowa 50317  
Telephone: 800-462-2716 • Fax: (515) 263-7105  
Internet Address - [www.fair-play.com](http://www.fair-play.com)

Effective 3-23-07 © 2007, Trans-Lux Midwest, All rights reserved.