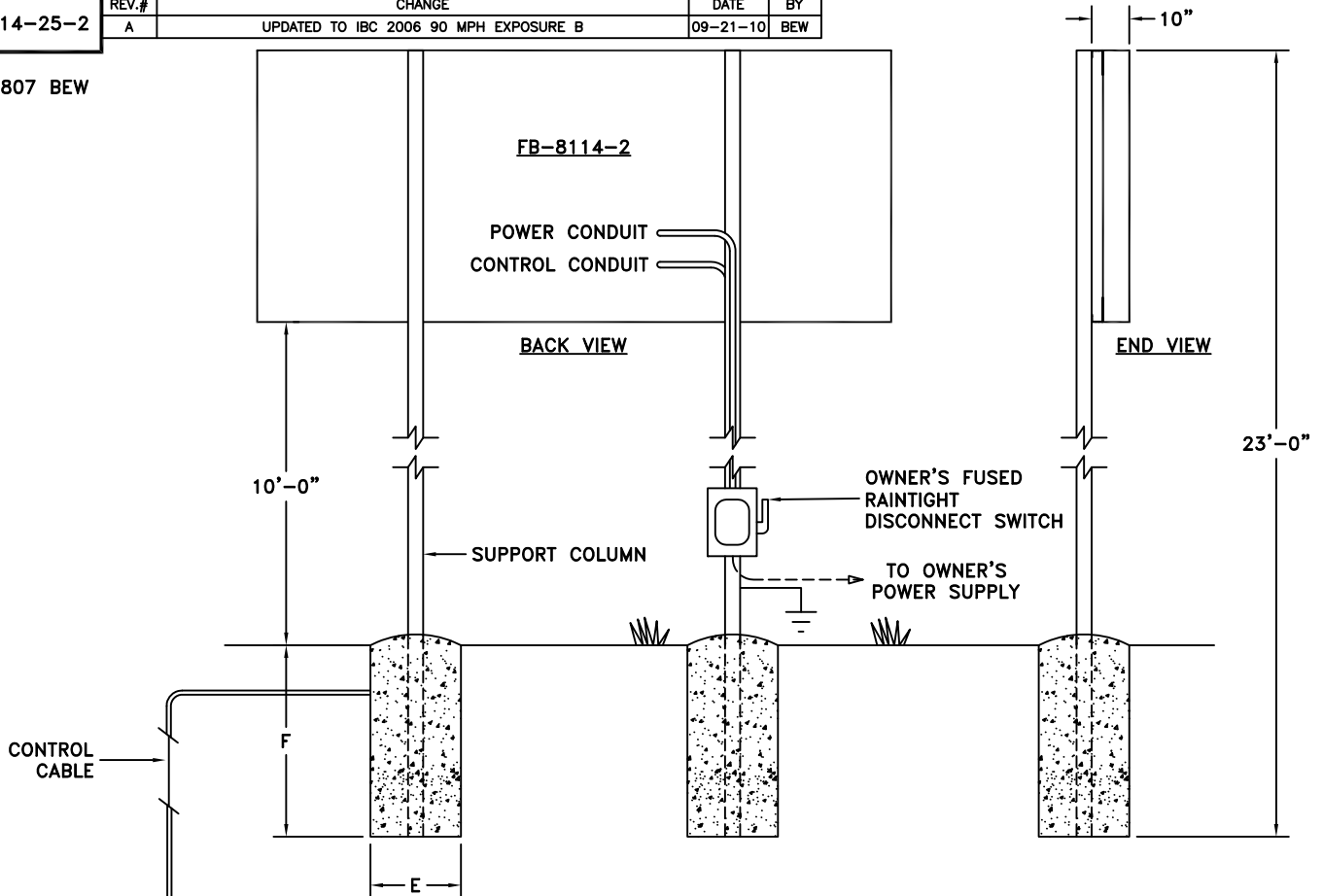


01-8114-25-2

REV.#	CHANGE	DATE	BY
A	UPDATED TO IBC 2006 90 MPH EXPOSURE B	09-21-10	BEW

050807 BEW



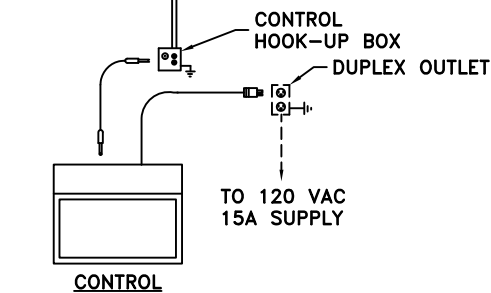
COLUMNS AND FOOTINGS SHOWN HERE, PROVIDED BY OTHERS, ARE SIZED TO COMPLY WITH IBC 2006 90 MPH EXPOSURE B REQUIREMENTS. THE MANUFACTURED PRODUCT EXCEEDS THE REQUIREMENTS OF IBC 2006 90 MPH EXPOSURE B AS MOUNTED HERE. DESIGN SHOULD BE ALTERED FOR DIFFERENT SOIL CONDITIONS, CLEARANCE, OR LOCAL CODES. FAIR-PLAY ASSUMES NO RESPONSIBILITIES FOR INSTALLATIONS DONE BY OTHERS.

CONTROL CABLES- SUGGEST 1/2" CONDUIT BE USED FOR BURIED CABLE IN AREAS WHERE IT MAY BE SUBJECT TO MECHANICAL DAMAGE. POWER WIRES SHOULD BE ROUTED IN SEPARATE CONDUIT FROM POWER CABLE.

INSTALLATION DRAWING SHOULD BE REVIEWED BY A LICENSED PROFESSIONAL ENGINEER IN YOUR AREA PRIOR TO CONSTRUCTION.

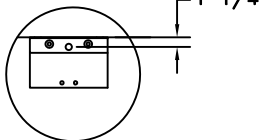
\* REFERENCE 01-0500-01 FOR INSTALLATION NOTES.

NOTE: IF WIRELESS IS ORDERED, 2 CDR CABLE & CONDUIT NOT REQ'D.

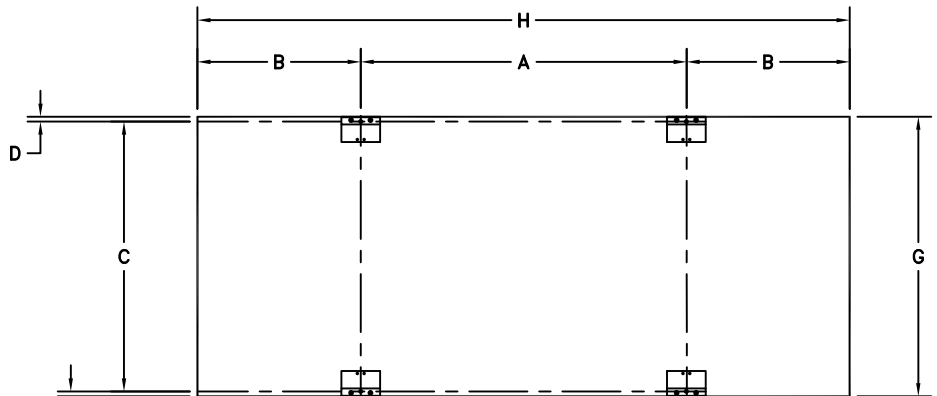


CONTROL

DETAIL A  
(2X SCALE)



STANDARD J BRACKET



FB-8114-2 (7'-0" L HANGER SPACING, STANDARD J BRACKETS)  
HANGER BRACKETS  
BACK VIEW

DIMENSIONS FB-8114-2 (7'-0" L HANGER SPACING, STANDARD J BRACKETS)

A	B	C	D	E	F	G	H	COLUMNS	POWER
7'-0"	3'-6"	5'-9 1/2"	1 1/4"	2'-6"	7'-0"	6'-0"	14'-0"	W8 X 18	REFERENCE 01-8114-25-1