

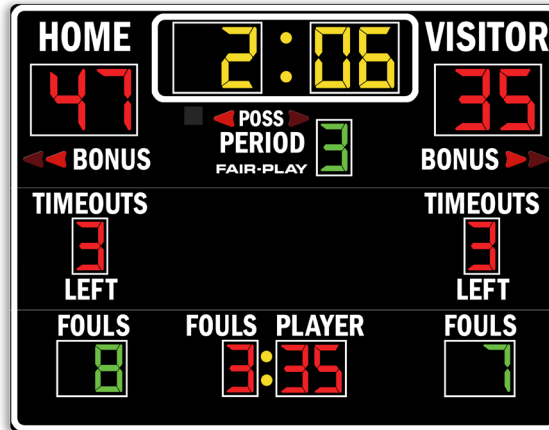
### CAPTIONS (H" x W")

HOME	6" x 18"
VISITOR	6" x 25"
PERIOD	4" x 16"
BONUS	4" x 15"
POSS	3" x 9"
FOULS (Personal)	4" x 14"
FOULS (Team)	4" x 14"
PLAYER	4" x 17"
TIMEOUTS	4" x 23"
LEFT	4" x 11"
Colon Diameter	1.5"

### DIGIT SIZES (H")

Game Clock	12"
Team Scores	12"
Period	10"
Team Fouls	10"
Personal Fouls	10"
Player Number	10"
Timeouts Left	10"

### MODEL: BB-1680-4



### DIMENSIONS

Height	Length	Depth	Weight
7'-0"	9'-0"	4"	236 lbs.

UV resistant custom paint & vinyl trim colors available.

### 15 Fair-Play FREE Standard Trim Tape Colors



### 12 Fair-Play FREE Standard Scoreboard Colors



### STANDARD EQUIPMENT

- Energy efficient LED designs
- Three distinct LED digit colors to visually organize critical game information
- Heavy-duty, vibrating horn (103 dB)
- 4-level control console display brightness adjustment
- 5-year limited warranty
- Easy access built-in service points
- Quality engineered water resistant aluminum
- Complete, secure and durable display mounting
- Built-in lighting suppressor (for standard data direct wire only)
- Request a free project design renderings
- Help Desk Support
- USA Factory authorized national and local sales, service and installation

### OPTIONAL EQUIPMENT

- Full-color electronic message displays
- Integrated scoring and display systems
- Illuminated, non-illuminated identification and sponsorship signage
- Personalized vinyl home team name
- Scoreboard caption color (other than white)
- Custom, unique signage options
- Scoreboard control carrying case
- Truss and decorative steel systems
- Power lighting protector or protective net
- Count side tables options in 8ft, 10ft or 7.7ft long configured with front BB scoreboard
- Synchronized locker room game / time of day clocks
- Protective net

### ELECTRICAL

Voltage	Hertz	Watts	AMPS	Phase	Wiring	Circuits Required	Safety Listing	Scoreboard Display	Control Console
120 VAC	60	134	1.12	1	2-Wire + ground	1	ETL/CETL	-22° to 131° F -30° to 55° C	32° to 131° F 0° to 55° C

All weights and measures are approximate. To confirm specifications please contact your local Fair-Play representative.

### OPERATING TEMPERATURES

For applicable models, consult with a sales representative on the following:

- Choice of Fair-Play's scorekeeper approved score systems
- Electronic Team Names
- Rear-illuminated scoreboard captions or scoreboard sport-conversion captions (electronic)
- Changeable scoreboard game captions — electronic available, operated via control
- Integrated, second operator statistics control