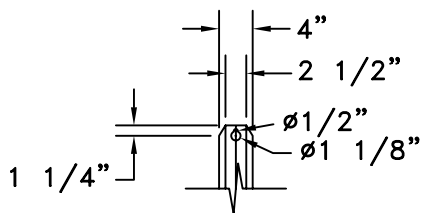


SUGGEST 3/8" TOGGLE BOLT WITH WASHER FOR TILE WALL, OR 3/8" EXPANSION BOLT WITH WASHER FOR MASONRY WALL.



**DETAIL A**  
**MOUNTING BRACKET**  
**SCALE 2X**

**NOTE:**

POWER WIRES SHOULD BE ROUTED IN SEPARATE CONDUIT FROM CONTROL CABLE.  
SUGGEST 1/2" CONDUIT FOR POWER AND CONTROL.

**VENTILATION-** THE SCOREBOARD & MESSAGE BACK INCORPORATES FANS FOR AIR CIRCULATION. INSTALL SCOREBOARD & MESSAGE SO AIR FLOW IS NOT RESTRICTED.

FAIR-PLAY ASSUMES NO RESPONSIBILITIES FOR INSTALLATIONS DONE BY OTHERS.