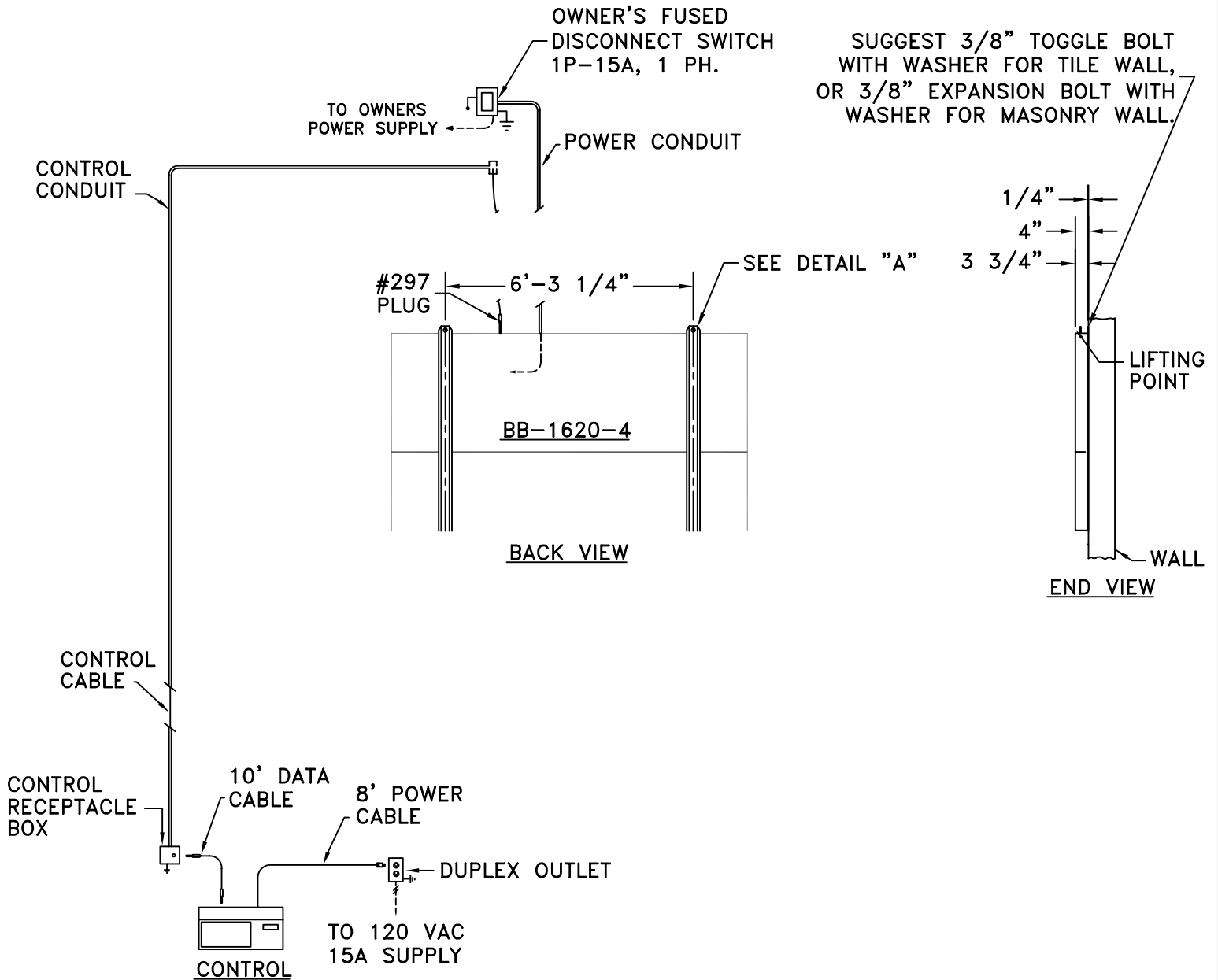
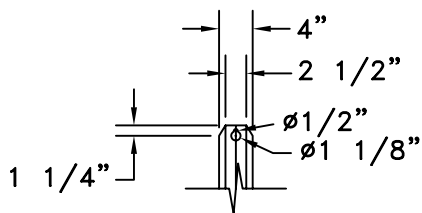


083005 BEW



SUGGEST 3/8" TOGGLE BOLT WITH WASHER FOR TILE WALL, OR 3/8" EXPANSION BOLT WITH WASHER FOR MASONRY WALL.



DETAIL A
MOUNTING BRACKET
SCALE 2X

NOTE:

POWER WIRES SHOULD BE ROUTED IN SEPARATE CONDUIT FROM CONTROL CABLE.
SUGGEST 1/2" CONDUIT FOR POWER AND CONTROL.

VENTILATION- THE SCOREBOARD & MESSAGE BACK INCORPORATES FANS FOR AIR CIRCULATION. INSTALL SCOREBOARD & MESSAGE SO AIR FLOW IS NOT RESTRICTED.

FAIR-PLAY ASSUMES NO RESPONSIBILITIES FOR INSTALLATIONS DONE BY OTHERS.