

REV#	CHANGE	DATE	BY
A	CORRECTED MODEL NUMBER	04-15-19	BEW

041219 BEW

BA-7116PC-2

POWER INPUT

19'-6"

10"

(PITCH COUNT SECTION)

BACK VIEW

END VIEW

10'-0"
OWNER'S FUSE BOX
DISCONNECT SWITCH
LOCATION AT
INSTALLERS DISCRETION

TO OWNER'S
POWER
SUPPLY

F

E

CONTROL CABLE

CONTROL
RECEPTACLE BOX

DUPLEX
OUTLET

TO 120 VAC
15A SUPPLY

SCBD CONTROL

COLUMNS AND FOOTINGS SELECTED FOR LOCATING SCOREBOARD 10'-0" ABOVE GRADE. COLUMNS AND FOOTINGS SHOWN HERE, PROVIDED BY OTHERS, ARE SIZED TO COMPLY WITH IBC 2006 90 MPH EXPOSURE B REQUIREMENTS. SOIL- AVERAGE WITH ALLOWABLE STRESSES OF 2500 psf. DESIGN SHOULD BE ALTERED FOR DIFFERENT SOIL CONDITIONS, CLEARANCE, OR LOCAL CODES. FAIR-PLAY ASSUMES NO RESPONSIBILITIES FOR INSTALLATIONS DONE BY OTHERS.

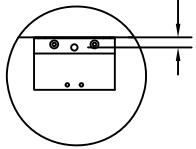
CONTROL CABLES- SUGGEST 3/4" CONDUIT BE USED FOR BURIED CABLE IN AREAS WHERE IT MAY BE SUBJECT TO MECHANICAL DAMAGE. POWER WIRES SHOULD BE ROUTED IN SEPARATE CONDUIT FROM CONTROL CABLE.

INSTALLATION DRAWING SHOULD BE REVIEWED BY A LICENSED PROFESSIONAL ENGINEER IN YOUR AREA PRIOR TO CONSTRUCTION.

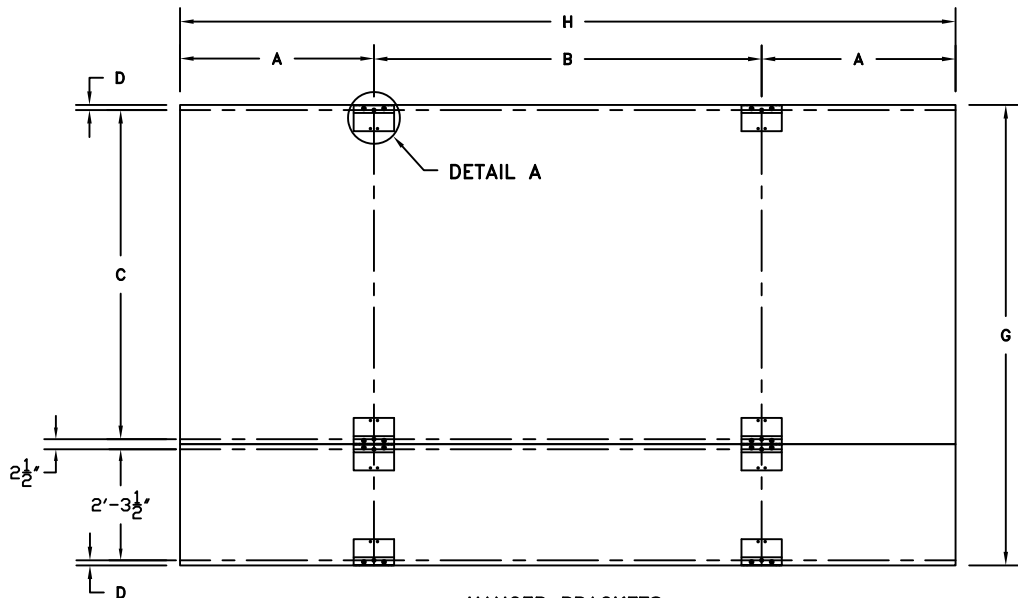
REFERENCE 01-0500-01 FOR INSTALLATION NOTES.

DETAIL A
(2X SCALE)

1 1/4"



STANDARD J BRACKET



HANGER BRACKETS
BACK VIEW

DIMENSIONS

A	B	C	D	E	F	G	H	COLUMNS	POWER
4'-0"	8'-0"	6'-9 1/2"	1 1/4"	3'-0"	9'-0"	9'-6"	16'-0"	W10 X 22	REFERENCE 01-7116-05-1