

Fair-Play

A TRANS·LUX[®] COMPANY

**STANDARD INDOOR SIGNS
INSTRUCTION MANUAL**

REVISION DATE: 10-02-2009

PART#: 98-0016-01

Fair-Play

A TRANS·LUX[®] COMPANY

SERVICE & CUSTOMER INFORMATION

CUSTOMER MUST HAVE PART NUMBER WHEN ORDERING ITEMS THROUGH THE SERVICE DEPARTMENT.

IF FURTHER HELP IS NEEDED CONTACT A FAIR-PLAY SERVICE REP IN YOUR FAIR-PLAY DEALER ORGANIZATION OR PHONE THE FAIR-PLAY HELP DESK AT (800) 462-2716.

TO AID YOU IN YOUR DISCUSSIONS WITH SERVICE REPS, WE SUGGEST THAT YOU RECORD THE FOLLOWING:

MODEL NUMBER: _____

FAIR-PLAY SALES ORDER NUMBER: _____

(THIS NUMBER IS FOUND IN THE UPPER RIGHT HAND CORNER OF THE PACKING SLIP AND INVOICE.)

INSTALLATION DATE: _____

WARRANTY: A COPY OF THE **FIVE-YEAR LIMITED WARRANTY** IS ENCLOSED.

FAIR-PLAY SCOREBOARDS

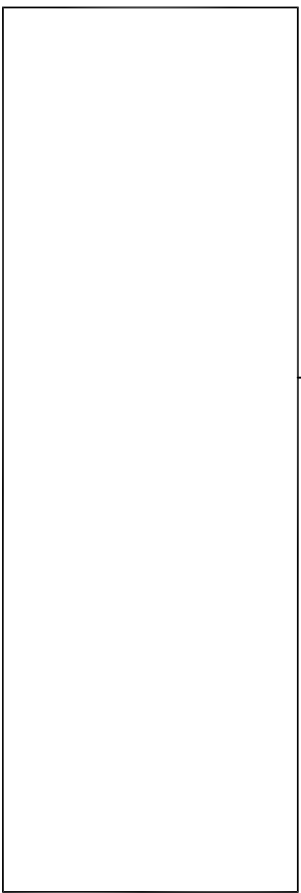
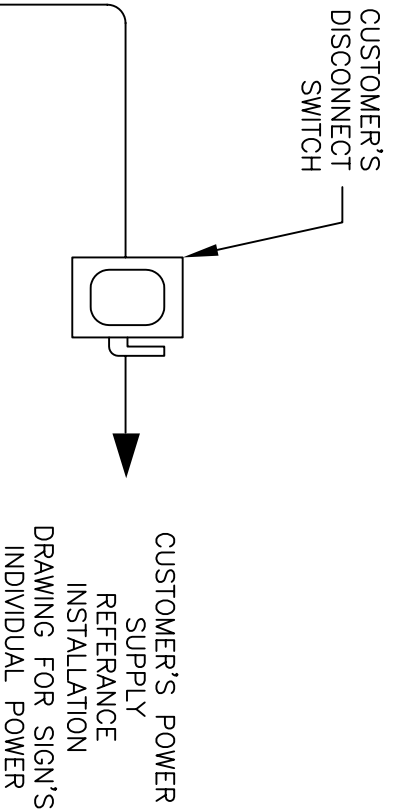
DES MOINES, IOWA

INSTRUCTION DRAWING LIST

STANDARD INDOOR SIGNS

TABLE OF CONTENTS

DESCRIPTION	DRAWING NUMBER
TYPICAL ELETRICAL INSTALLATION.....	01-0017-01
3" DEEP PENDANT ASSEMBLY DETAILS.....	55-0000-01
6.5" DEEP PENDANT WELL-NUT ASSEMBLY.....	H-5-G094-1
STACKING SCHEME FOR MULTIPLE INDOOR PENDANT SIGNS.....	55-0000-02
CHART FOR SIGN DETAILS & TYPICAL INSTALLATION	
WARRANTY	



INDOOR SIGN

IMPORTANT SAFETY & OPERATING INSTRUCTIONS:

1. SIGN POWER SUPPLY – THIS SIGN IS DESIGNED TO OPERATE FROM A 120 VAC SUPPLY. UNREASONABLE VOLTAGES CAN BE DAMAGING. (SEE LAMP LIFE – NOTE #4)
2. POWER WIRES SHOULD BE ROUTED IN SEPARATE CONDUIT FROM CONTROL CABLES.
3. LAMP LIFE – LAMP LIFE MAY BE REDUCED SIGNIFICANTLY WHEN CONDITIONS EXIST THAT CAUSE VIBRATION, KNOCKS, HIGH OPERATING VOLTAGE, OR HIGH OPERATING TEMPERATURES. INSTALL SIGN TO MINIMIZE THESE CONDITIONS.
4. VENTILATION: INSTALL PRODUCT SO THAT AIR FLOW IS NOT RESTRICTED. CUSTOMER'S STRUCTURE MUST ALLOW FOR THE FREE FLOW OF OUTSIDE AMBIENT AIR TO THE PRODUCT, WITHOUT RECIRCULATION OF AIR. WARRANTY WILL BE VOID IF COMPONENTS FAIL DUE TO AIR FLOW RESTRICTIONS.



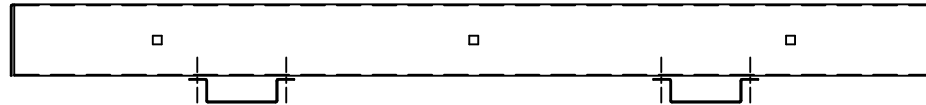
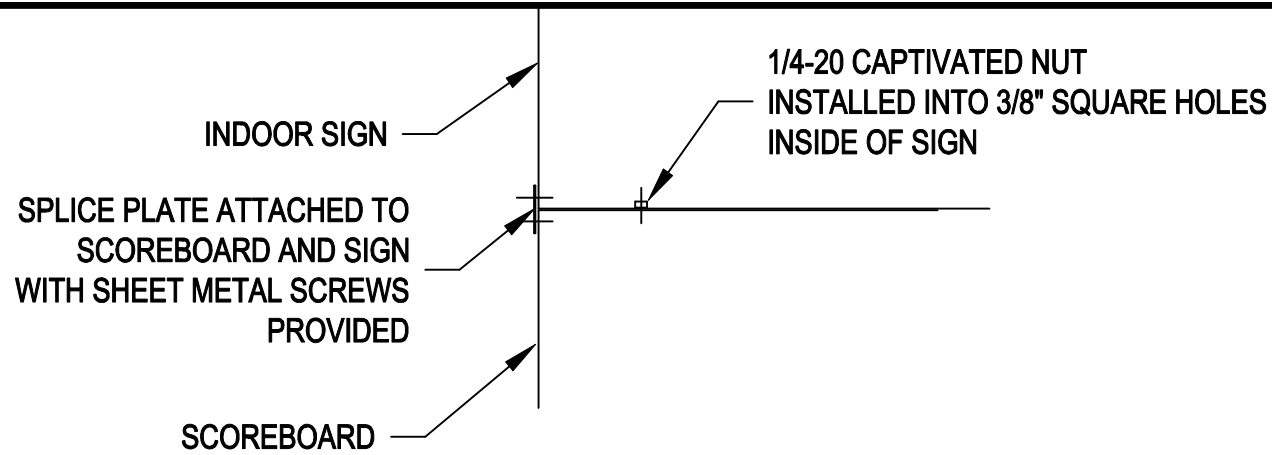
A TRANS-LUX COMPANY

1700 DELAWARE AVE.
DES MOINES, IA 50317

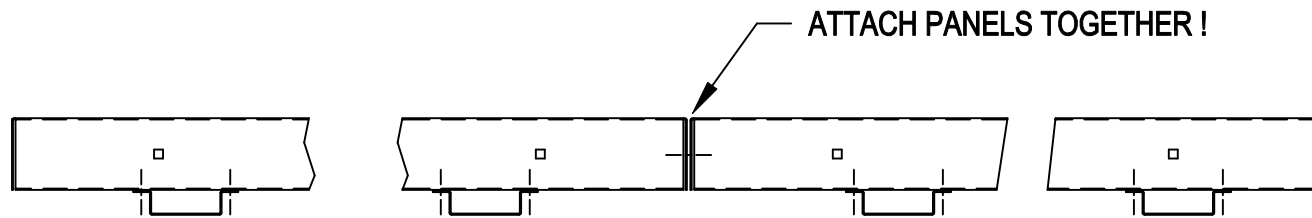
A	ADDED VENTILATION NOTES	09-14-06	BEW
OR	ORIGINAL RELEASE	03-20-00	BEW
REV.#	CHANGE	DATE	BY

THIS DOCUMENT CONTAINS FAIR-PLAY PROPRIETARY INFORMATION. ANY DISCLOSURE, USE OR DUPLICATION OF THE DOCUMENT OR OF ANY INFORMATION CONTAINED THEREIN FOR OTHER THAN THE SPECIFIC PURPOSE FOR WHICH IT WAS DISCLOSED IS EXPRESSLY PROHIBITED. EXCEPT AS MAY BE OTHERWISE AGREED TO IN WRITING. COPYRIGHT 2003.

TITLE	DRAWN BY	DATE	SCALE	MODEL:
ELECTRICAL INSTALLATION SCHEME FOR STANDARD INDOOR SIGNS	BEW	03-20-00	FULL	A
				DWG. NO. 01-0017-01



SINGLE PANEL ASSEMBLY
TOP VIEW



MULTIPLE PANEL ASSEMBLY
TOP VIEW

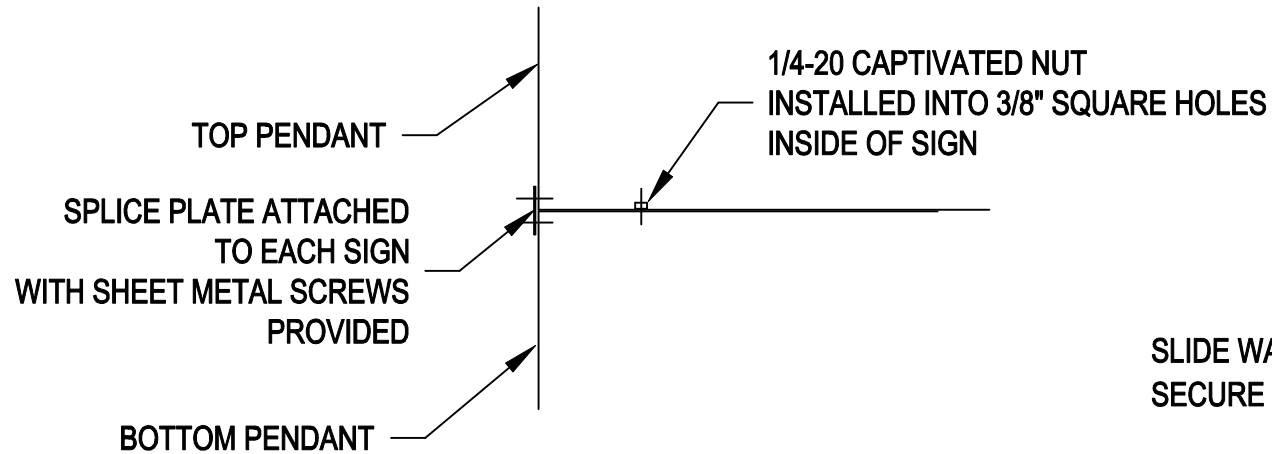
ATTACH SIGNS TO SCOREBOARD AND PANEL TO PANEL
WITH 1/4" HARDWARE PROVIDED

Fair-Play
A **TRANS-LUX** Company
1700 DELAWARE AVE.
DES MOINES, IA 50317

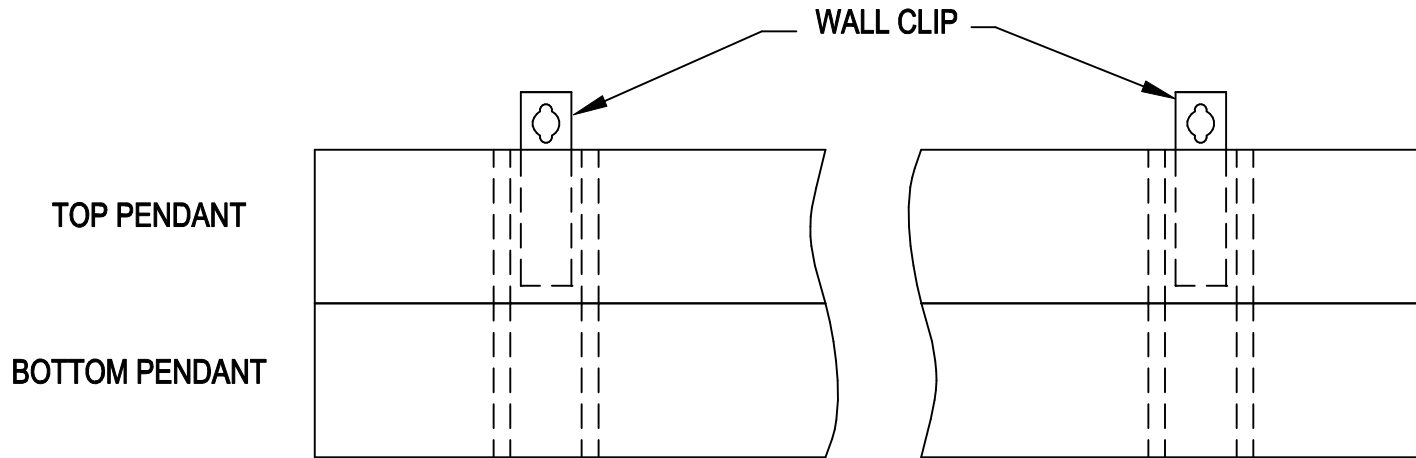
THIS DOCUMENT CONTAINS FAIR-PLAY PROPRIETARY INFORMATION. ANY DISCLOSURE, USE OR DUPLICATION OF THE DOCUMENT OR OF ANY INFORMATION CONTAINED THEREIN FOR OTHER THAN THE SPECIFIC PURPOSE FOR WHICH IT WAS DISCLOSED IS EXPRESSLY PROHIBITED, EXCEPT AS MAY BE OTHERWISE AGREED TO IN WRITING

TITLE	DRAWN BY DMS	A	MODEL:
INDOOR PENDANT SIGN ASSEMBLY	DATE 06/29/99		PDI
	SCALE NONE	DWG. NO. 55-0000-01	

ITEM	CHANGE	DATE	BY
------	--------	------	----



SLIDE WALL CLIP INTO PENDANT HANGER
 SECURE WALL CLIP TO WALL



* STACK NO MORE
 THAN 3 PENDANTS
 TOP OR BOTTOM

ATTACH SIGNS TO SCOREBOARD AND PANEL TO PANEL
 WITH 1/4" HARDWARE PROVIDED

Fair-Play
 A **TRANS-LUX** Company
 1700 DELAWARE AVE.
 DES MOINES, IA 50317

THIS DOCUMENT CONTAINS FAIR-PLAY PROPRIETARY INFORMATION. ANY DISCLOSURE, USE OR DUPLICATION OF THE DOCUMENT OR OF ANY INFORMATION CONTAINED THEREIN FOR OTHER THAN THE SPECIFIC PURPOSE FOR WHICH IT WAS DISCLOSED IS EXPRESSLY PROHIBITED, EXCEPT AS MAY BE OTHERWISE AGREED TO IN WRITING

TITLE	DRAWN BY KGW	MODEL: A
STACKING SCHEME INDOOR PENDANT SIGNS	DATE 10/30/00	PDI
	SCALE NONE	DWG. NO. 55-0000-02

ITEM	CHANGE	DATE	BY
------	--------	------	----

STANDARD INDOOR SIGNS DATA CHART

	SIGN TYPE	SIZE		EST. WT. (LBS.)	POWER		LAMPS	BALLAST	HANGER	
		"A" LENGTH	"B" HEIGHT		CIRCUITS REQ'D.	TOTAL WATTS			TYPE	DIM. CTR. TO CTR.
FDI-0320	FDI	3'-0"	1'-8"	12					1	40
FDI-0336	FDI	3'-0"	3'-0"	45					2	28
FDI-0342	FDI	3'-0"	3'-6"	45					2	1
FDI-0360	FDI	3'-0"	5'-0"	60					1	38
FDI-0360-X	FDI	3'-0"	5'-0"	60					1	29
FDI-03132	FDI	3'-0"	11'-0"	50					2	28
FDI-0436	FDI	4'-0"	3'-0"	50					1	
FDI-0460	FDI	4'-0"	5'-0"	44					2	
FDI-0484	FDI	4'-0"	7'-0"	35					1	24
FDI-0566-05	FDI	5'-5"	5'-6"						2	21
FDI-0584	FDI	5'-0"	7'-0"	120					2	10
FDI-0630-2S	FDI	6'-0"	2'-6"	75					1	
FDI-0660	FDI	6'-0"	5'-0"	120					1	
FDI-0918-06-4S	FDI	9'-6"	1'-6"	60						
FDI-0924	FDI	9'-0"	2'-0"	50					2	31
FDI-0924-06-4S	FDI	9'-6"	2'-0"	65						
FDI-0930-06-4S	FDI	9'-6"	2'-6"	119					1	
FDI-1124-4S	FDI	11'-0"	2'-0"	110					1	
FDI-1530	FDI	15'-0"	2'-6"	188					2	27
FDI-2524-02	FDI	25'-2"	2'-0"	130					2	25
PDI-0122-06	PDI	1'-6"	1'-10"	10					1	
PDI-0212-06	PDI	2'-6"	1'-0"	5					1	
PDI-0212-06-3S	PDI	2'-6"	1'-0"	30					1	
PDI-0217	PDI	2'-0"	1'-5"	10					1	
PDI-0218-06	PDI	2'-6"	1'-6"						1	
PDI-0312	PDI	3'-0"	1'-0"	6						
PDI-0324	PDI	3'-0"	2'-0"	20					1	
PDI-0318-06	PDI	3'-6"	1'-6"	20					1	
PDI-0336	PDI	3'-0"	3'-0"	15					2	1
PDI-0360	PDI	3'-0"	5'-0"	25					1	
PDI-0424-24D	PDI	4'-0"	2'-0"	15					1	
PDI-0460	PDI	4'-0"	5'-0"	30					1	
PDI-0514	PDI	5'-0"	1'-2"						2	22
PDI-0612	PDI	6'-0"	1'-0"	11.25					1	
PDI-0618	PDI	6'-0"	1'-6"	15					1	
PDI-0624	PDI	6'-0"	2'-0"	15					1	
PDI-0634	PDI	6'-0"	2'-10"	20					1	
PDI-07-08	PDI	7'-0"	8"	9					1	
PDI-0712	PDI	7'-0"	1'-0"	14					1	
PDI-0718	PDI	7'-0"	1'-6"	20					1	
PDI-0724	PDI	7'-0"	2'-0"	25					1	
PDI-0730	PDI	7'-0"	3'-0"	33					1	
PDI-0824	PDI	8'-0"	2'-0"	25					1	
PDI-0912	PDI	9'-0"	1'-0"	17					1	
PDI-0918	PDI	9'-0"	1'-6"	25					1	
PDI-0924	PDI	9'-0"	2'-0"	30					1	
PDI-0930	PDI	9'-0"	2'-6"	43					1	
PDI-0934	PDI	9'-0"	2'-10"	26					1	
PDI-0934-PN	PDI	9'-0"	2'-10"	40					1	
PDI-1836	PDI	18'-0"	3'-0"	102					1	
PDI-1018	PDI	10'-0"	1'-6"						1	
PDI-1024	PDI	10'-0"	2'-0"	30					1	
PDI-1124-4S	PDI	11'-0"	2'-0"	25					1	
PDI-1218	PDI	12'-0"	1'-6"	30					1	
PDI-1224	PDI	12'-0"	2'-0"	40					1	
PDI-1234	PDI	12'-0"	2'-10"	50					1	
PDI-1234-PN	PDI	12'-0"	2'-10"	50					1	
PDI-1312	PDI	13'-0"	1'-0"	25						
PDI-1317	PDI	5'-1 1/8"	1'-0"	30					1	34
PDI-1512	PDI	15'-0"	1'-0"	29						
PDI-1518	PDI	15'-0"	1'-6"	35					1	
PDI-1524	PDI	15'-0"	2'-0"	45					1	
PDI-1534	PDI	15'-0"	2'-10"	30					1	
PDI-1548	PDI	15'-0"	4'-0"						1	
PDI-1806	PDI	18'-0"	0'-6"	20					1	
PDI-18075	PDI	18'-0"	0'-7 1/2"	22					1	
PDI-1818	PDI	18'-0"	1'-6"	45					1	
PDI-1824	PDI	18'-0"	2'-0"	60					1	
PDI-2118	PDI	21'-0"	1'-6"	50					1	
PDI-2124	PDI	21'-0"	2'-0"	65					1	
PDI-2224	PDI	22'-0"	2'-0"	70					1	
PDI-3736	PDI	37'-0"	3'-0"	209					1	
RII-0336-06	RII	3'-6"	3'-0"	60	1	90	2	6	2	23
RII-0428-06	RII	4'-6"	2'-4"	65	1	80	4	2	2	23
RII-0442	RII	4'-0"	3'-6"	50	1	105	3	6	2	26
RII-0460	RII	4'-0"	5'-0"	163	1	175	3	1	2	26
RII-0472	RII	4'-0"	6'-0"	195	1	300	3	6	2	36
RII-0536-01	RII	5'-1"	3'-0"		1	180	2	6	2	20
RII-0568	RII	5'-0"	5'-8"	125	1	200	4	2, 6	2	2
RII-0624	RII	6'-0"	2'-0"	75	1	140	4	6	2	19
RII-0630-2S	RII	6'-0"	2'-6"	122	1	210	1	6		
RII-0718	RII	7'-0"	1'-6"	55	1	80	4	6	2	3
RII-0720	RII	7'-0"	1'-8"	60	1	80	4	6	2	3
RII-0724	RII	7'-0"	2'-0"	90	1	160	4	6	2	3

STANDARD INDOOR SIGNS DATA CHART

SIGN TYPE	SIZE		EST. WT. (LBS.)	POWER		LAMPS	BALLAST	HANGER	
	"A" LENGTH	"B" HEIGHT		CIRCUITS	TOTAL			TYPE	DIM. CTR. TO CTR.
				REQ'D.	WATTS				
RII-0736	7'-0"	3'-0"	95	1	160	4	6	2	3
RII-0921-06-4S	9'-6"	1'-9"	400	1	640	4	1		
RII-0924	9'-0"	2'-0"	85	1	200	5	4	2	4
RII-0924-06-4S	9'-6"	2'-0"	62	1	640	4	6		
RII-0928	9'-0"	2'-4"	125	1	200	5	4	2	4
RII-0936	9'-0"	3'-0"	90	1	300	5	4	2	4
RII-1024	11'-0"	2'-0"	163	1	200	6	4	2	37
RII-1124-4S	11'-0"	2'-0"	125	1	320	6	4	2	39
RII-1124-4S	11'-0"	2'-0"	500	1	800	5	4	1	
RII-1122-4S	11'-0"	1'-8"	450	1	800	5	4	1	
RII-1224	12'-0"	2'-0"	105	1	220	6	3	2	32
RII-1524	15'-0"	2'-0"	110	1	240	8	3	2	16
RII-1824	18'-0"	2'-0"	125	1	350	6, 7	3	2	17
RII-2124	21'-0"	2'-0"	140	1	380	7, 8	3	2	18
SN-1212	FDI 12'-8 1/2"	2'-0"	24					2	30
SN-1267	RII 15'-0"	2'-6"	600	1	1	8	3	1	
SN-1310	RII 8'-0"	8'-0"	520	2	560	4	8	2	33
SN-1350	RII 15'-0"	2'-0"	80					1	
SN-1353	RII 9'-10 1/4"	2'-0"	100	1	200	5	4	2	35
SN-6016	RII 6'-6"	2'-0"	80	1	110	6	4	2	5
SN-6039	PDI 18'-2"	1'-6"	60					1	
SN-6527	PDI 6'-5"	1'-5 1/2"	15					1	
SN-6532	RII 6'-6"	6'-6 1/2"	45	1	55	6	5	2	6
SN-6543	PDI 6'-5"	1'-7"	10					1	
SN-6582	PDI 4'-0"	9"	10					1	
SN-6602	RII 9'-0"	2'-0"	76	1	200	5	4	2	7
SN-6603	PDI 9'-0"	2'-0"	23					1	
SN-6604	RII 9'-0"	1'-6"	85	1	200	5	4	2	7
SN-6605	PDI 9'-0"	1'-6"	17					1	
SN-6606	PDI 9'-0"	2'-10"	40					1	
SN-6607	PDI 9'-0"	1'-0"	25					1	
SN-6625	PDI 15'-0"	2'-0"	36					1	
SN-6627	PDI 15'-0"	1'-6"	35					1	
SN-6639	FDI 4'-0"	2'-10"	25						
SN-6702	RII 11'-10"	2'-0"	80	1	220	6	3		
SN-6704	PDI 11'-10"	2'-0"	35					1	
SN-6717	PDI 11'-10"	1'-6"	25					1	
SN-F688	RII 9'-0"	1'-0"	60	1	100	5	4	2	7
SN-F996	RII 18'-2"	2'-0"	200	1	360	5, 7	3, 4	2	9
SN-G083	RII 1'-11 1/2"	2'-7"	35	1	40	1	6	2	
SN-G084	RII 2'-2 1/2"	2'-6"	35	1	40	1	6	2	
SN-G176	FDI 3'-0"	4'-0"	45					2	10
SN-G403	RII 5'-0"	6'-0"	165	1	200	5	4		
SN-G417	RII 5'-0"	2'-6"	75	1	80	4	6	2	2
SN-G571	RII 4'-1"	2'-8"	75	1	80	4	6	2	11
SN-G572	RII 6'-0"	2'-0"	75	1	120	2	6	2	12
SN-H157	RII 7'-0"	4'-0"	160	1	210	3	6	2	7
SN-H158	RII 8'-0"	1'-6"	75	1	160	4	6		
SN-H279	FDI 18'-2"	2'-0"	125					2	9
SN-J026	PDI 9'-0"	2'-6"	75					2	13
SN-J394	RII 4'-6"	2'-10"	75	1	80	4	6	2	14
SN-J577	PDI 17'-10"	2'-0"	80					1	
SN-J636	RII 5'-1"	2'-10"	100	1	100	5	4	2	15
SN-K056	FDI 4'-11 3/8"	1'-4 1/8"	30						
SN-K057	FDI 4'-11 3/8"	1'-4 1/8"	45						
PN-6606	FDI 9'-0"	2'-10"	150					1	

MODEL #: FDI= FULL DEPTH INDOOR
PDI= PENDANT INDOOR
RII= REAR ILLUMINATED INDOOR

* POWER IS 120 VAC, 60 Hz, 2 WIRE.

BALLAST TYPE: 1= SM-2E40-S-TP
2= 539-TCP
3= 806-SHL-TCP
4= 881-BR-TCP or GE-260-IS-MV-N
5= 822-BR-TC-P
6= 213-TCP
7= R-2E75-S-TP

LAMP TYPE: 1= F24T12/CW
2= F36T12/CW
3= F42T12/CW
4= F48T12/CW
5= F60T12/CW
5.5= F64T12/CW
6= F72T12/CW
7= F84T12/CW
8= F96T12/CW

HANGER TYPE:

- 1= ATTACHES TO SCOREBOARD
- 2= HAT

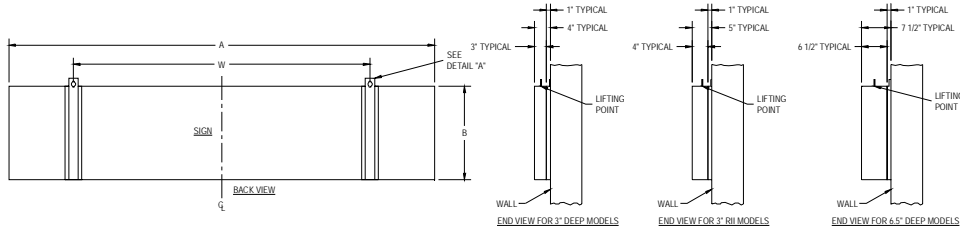
HANGER SPACING:

- 1= W=32" ON CENTER
- 2= W=3'-0" ON CENTER
- 3= W=2'-1 5/8", 2'-1 5/8"
- 4= W=3'-1 5/8", 3'-1 5/8"
- 5= W=6'-3 9/16" ON CENTER
- 6= W=4'-1 13/32" ON CENTER
- 7= W=75 1/4" ON CENTER
- 8= W=6'-7", 6'-7"
- 9= W=5'-4", 5'-11", 5'-11"
- 10= W=1'-8" ON CENTER
- 11= W=3'-4" ON CENTER
- 12= W=5'-3" ON CENTER
- 13= W=4'-6" ON CENTER
- 14= W=2'-0" ON CENTER

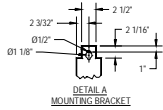
- 15= W=2'-6" ON CENTER
- 16= W=6'-3 1/4" ON CENTER
- 17= W=7'-11 1/4" ON CENTER
- 18= W=8'-11 1/4" ON CENTER
- 19= W=3'-3 1/4" ON CENTER
- 20= W=1'-2 1/8", 1'-2 1/8" ON CENTER
- 21= W=2'-8 1/4" ON CENTER
- 22= W=4'-8" ON CENTER
- 23= W=17 1/4" ON CENTER
- 24= W=3'-8" ON CENTER
- 25= W=125 1/8" ON CENTER
- 26= W=1'-11 1/4" ON CENTER
- 27= W=7'-6" ON CENTER
- 28= W=2'-8" ON CENTER
- 29= W=2'-2 1/8" CTR TO CTR
- 30= W=3'-2 1/8", X (2) 6'-4 1/4" L CABS

- 31= W=8'-8"
- 32= W=6'-0" ON CENTER
- 33= W=4'-0" X= 7'-5 1/2"
- 34= W=3'-10 15/16"
- 35= W=4'-9 3/4"
- 36= W=2'-3" ON CENTER
- 37= W=6'-10" ON CENTER
- 38= W=3'-8 1/8" ON CENTER
- 39= W=66" ON CENTER
- 40= W=31 7/8" ON CENTER

TYPICAL INDOOR SIGN INSTALLATION



NOTE:
POWER WIRES SHOULD BE ROUTED IN SEPARATE CONDUIT FROM CONTROL CABLE. SUGGEST 1/2\"/>



Fair-Play

A TRANS-LUX® COMPANY

**TRANS-LUX MIDWEST CORPORATION
d.b.a. Fair-Play Scoreboards**

LIMITED SCOREBOARD WARRANTY

Fair-Play provides a limited five-year warranty when its permanently mounted scoreboards and scoreboard controllers are operated and maintained according to the owner's instructions furnished with the equipment. Such limited warranty is two years for portable scoreboards. This warranty covers all electronic components, including LEDs, for five or two years as applicable from the date of invoice that prove to be defective in material or workmanship. Our #161 and #655-type indoor lamps are warranted on a ten-year factory exchange basis from the date of invoice.

Warranted for one year are mechanical control panel switches, connectors, horns and visual goal indicators. Wireless control components are warranted for two years. Wireless control devices even if not defective may not function reliably in certain environments or otherwise due to outside causes beyond Seller's control, including but not limited to cell phones or portable computers. In the event it is determined a wireless device during the ninety (90) day period following shipment does not function in accordance with its specification without repeated errors or is otherwise consistently unreliable, and Seller determines repair or replacement thereof is not likely to improve performance, at Purchaser's request, upon return to Seller postage prepaid in like new condition within such time period, Seller's sole obligation shall be to refund the entire purchase price of such device. Thereafter Seller's sole obligation shall be to repair or replace, other non-wireless defective components for the balance of the warranty period without responsibility or liability for claims for unreliable performance not due to defects. Batteries, battery packs and battery recharging equipment are warranted for thirty (30) days, except for defects arising from misuse, abuse, negligence or other exclusions set forth below. In no event will Fair-Play have any obligation for any damage caused by defective batteries, battery packs and battery recharging equipment. Also warranted for 30 days are outdoor portable scoreboard carts.

Fair-Play's sole obligation during the applicable warranty period is to repair or replace any defective items. Defective assemblies or components are to be returned postage prepaid to Fair-Play's service center, after obtaining a return authorization number, for repair or replacement at no cost to the owner during the applicable warranty period. Replacement parts may be either new or like-new. Return shipping costs after repair will be paid by Seller except for overnight, express or special shipping costs which shall be paid by Purchaser. Excluded from this warranty are fuses, major components provided by other manufacturers including, but not limited to, computers, rotating signs, power distribution panels, disconnect switches and components of rear-illuminated or lighted signs. The other manufacturer's warranty will apply to such components. Also excluded from this warranty are electronic signs or message centers and related controls. These items are covered by their own specific warranty. The warranty will be suspended as to units for which the purchaser is in default of payment in accordance with the agreed Terms of Payment. In the event the purchaser remits the full amount due in immediately available funds on a unit for which the warranty was suspended, the warranty will be reinstated for the remaining balance of the original warranty period without allowance for the time period of the suspension. The warranty does not apply to units that have been stolen.

THIS WARRANTY IS IN LIEU OF ALL OTHER WARRANTIES OF SELLER, EXPRESS OR IMPLIED, AND, EXCEPT TO THE EXTENT HEREIN PROVIDED, SELLER DOES NOT MAKE ANY WARRANTY WHATSOEVER INCLUDING, WITHOUT LIMITATION, ANY WARRANTY OF MERCHANTABILITY OR FITNESS FOR ANY PARTICULAR USE OR PURPOSE.

Fair-Play shall not be liable for any incidental, special or consequential damages nor any other loss that may arise in connection with its warranted equipment or any claims under this warranty. (Individual states may have limitations on the length of implied warranties.)

This warranty does not cover shipping damages or problems which result from improper installation of your equipment. (Promptly inspect shipment for visible or concealed damages and report immediately to the delivering carrier.)

Under no circumstances shall this warranty apply if the warranted products have been subject to abuse, misuse, neglect, sabotage, acts of terrorists, negligence, accident, or any casualties or abnormal conditions, including without limitation fire, civil disorders, war, flood, lightning or acts of God. Nor does this warranty cover labor or damage resulting from, or problems caused by, any repair, alteration, modification, or adjustment of the warranted scoreboards or components not performed by Fair-Play.

This warranty extends only to the original end-user purchaser of the warranted products, and is not transferable. For information on extended warranties contact your Fair-Play dealer. In the event authorized Fair-Play dealers make extensions to or provide additional service for Fair-Play products, Fair-Play assumes no liability therefore other than the specific warranty set forth above in this Limited Warranty.

Trans-Lux Midwest Corporation

Fair-Play Scoreboards - A Division of Trans-Lux Midwest Corporation
For Service contact the Trans-Lux Help Desk
1700 Delaware Avenue, Des Moines, Iowa 50317
Telephone: 800-462-2716 • Fax: (515) 263-7105
Internet Address - www.fair-play.com

Effective 3-23-07 © 2007, Trans-Lux Midwest, All rights reserved.