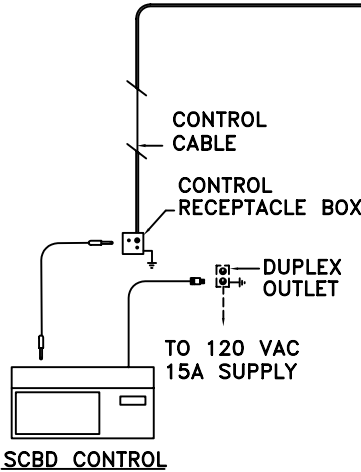
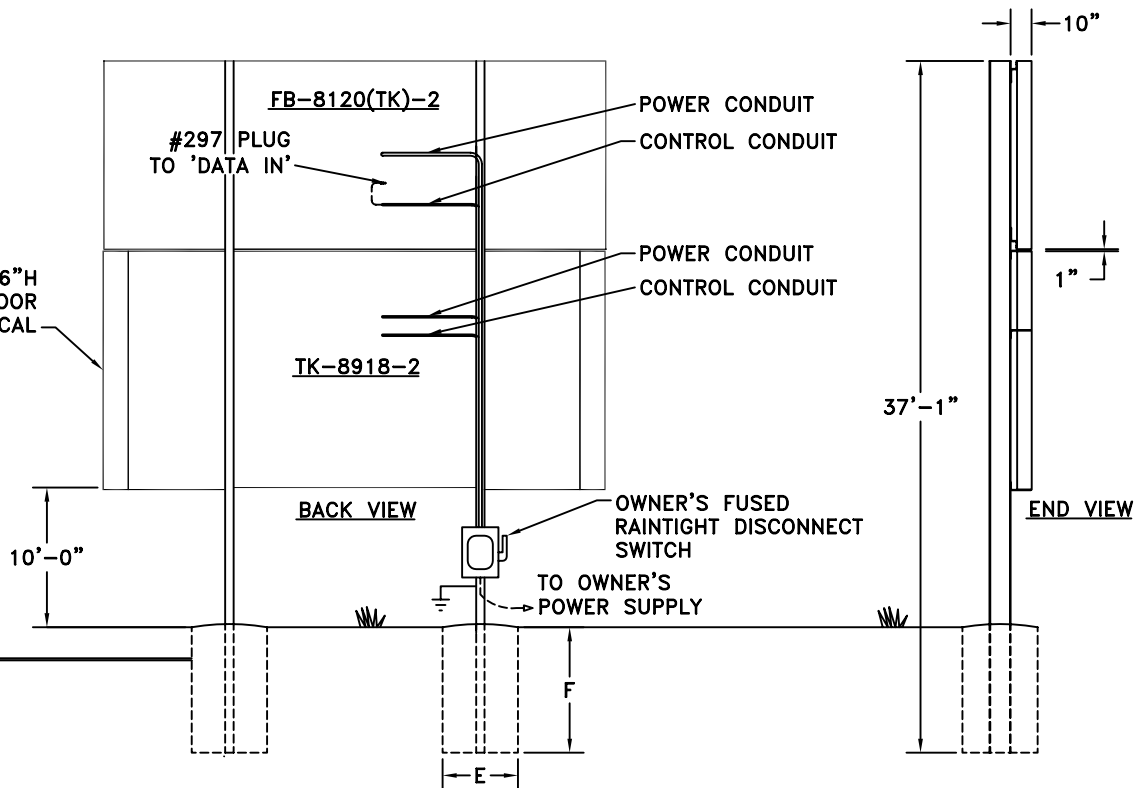


110206 BEW

1'-0" L X 9'-6" H
FULL DEPTH OUTDOOR
SIGN, TYPICAL



COLUMNS AND FOOTINGS SELECTED FOR LOCATING SCOREBOARD 10'-0" ABOVE GRADE. WIND LOAD- 30 psf (80 mph). SOIL- AVERAGE WITH ALLOWABLE STRESSES OF 2500 psf. DESIGN SHOULD BE ALTERED FOR DIFFERENT SOIL CONDITIONS, CLEARANCE, OR LOCAL CODES.

FAIR-PLAY ASSUMES NO RESPONSIBILITIES FOR INSTALLATIONS DONE BY OTHERS. CONTROL CABLES- SUGGEST 1/2" CONDUIT BE USED FOR BURIED CABLE IN AREAS WHERE IT MAY BE SUBJECT TO MECHANICAL DAMAGE. POWER WIRES SHOULD BE ROUTED IN SEPARATE CONDUIT FROM POWER CABLE.

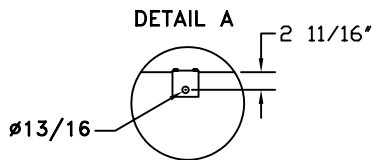
INSTALLATION DRAWING SHOULD BE REVIEWED BY A LICENSED PROFESSIONAL ENGINEER IN YOUR AREA PRIOR TO CONSTRUCTION.

WATER INGRESS

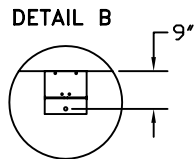
NO ADDITIONAL PENETRATIONS MAY BE CREATED IN THE PRODUCT UNLESS THEY ARE SEALED PER NEMA 4 STANDARD. ALL FIELD PENETRATIONS MUST BE TESTED USING A STREAM OF WATER Poured FROM A CONTAINER LOCATED NOT LESS THAN 6" AWAY HORIZONTALLY. WARRANTY WILL BE VOID IF THIS TESTING IS NOT COMPLETED DURING INSTALLATION, OR IF THERE IS WATER INGRESS FROM FIELD MODIFICATIONS. ANY CABINETS LOCATED ABOVE THE PRODUCT MUST NOT ALLOW WATER TO BUILD UP AND THEN FLOW THROUGH CONDUITS INTO THE PRODUCT. PENETRATIONS BETWEEN PRODUCT AND HIGHER CABINETS MUST BE SEALED BETWEEN THE CABINET INTERNAL SPACES USING WATER TIGHT CABLE TO CONDUIT SEALS. HOLES REMAINING FROM EYE BOLT REMOVAL MUST BE FILLED, SEALED AND TESTED.

VENTILATION

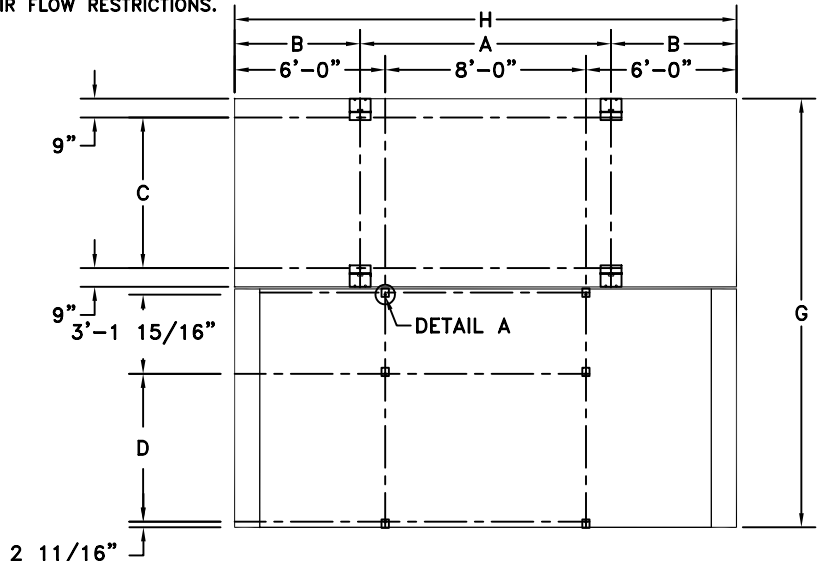
INSTALL PRODUCT SO THAT AIR FLOW IS NOT RESTRICTED. CUSTOMER'S STRUCTURE SHOULD ALLOW FOR THE FREE FLOW OF OUTSIDE AMBIENT AIR TO THE BACK OF THE PRODUCT, WITHOUT RECIRCULATION OF AIR. WARRANTY WILL BE VOID IF COMPONENTS FAIL DUE TO AIR FLOW RESTRICTIONS.



"L" BRACKET
1/4" PLATE STEEL



STANDARD BRACKET
(2X SCALE)



FB-8120(TK)-2 WITH TK-8918-2 & (2) FULL DEPTH SIGNS
HANGER BRACKETS
BACK VIEW

DIMENSIONS FB-8120(TK)-2 WITH TK-8918-2 & (2) FULL DEPTH SIGNS

A	B	C	D	E	F	G	H	COLUMNS	POWER
10'-0"	5'-0"	6'-0"	5'-10 1/16"	3'-0"	10'-0"	17'-1"	20'-0"	W12 X 40	TOTAL WATTS: 1,291 120 VAC, 1ph