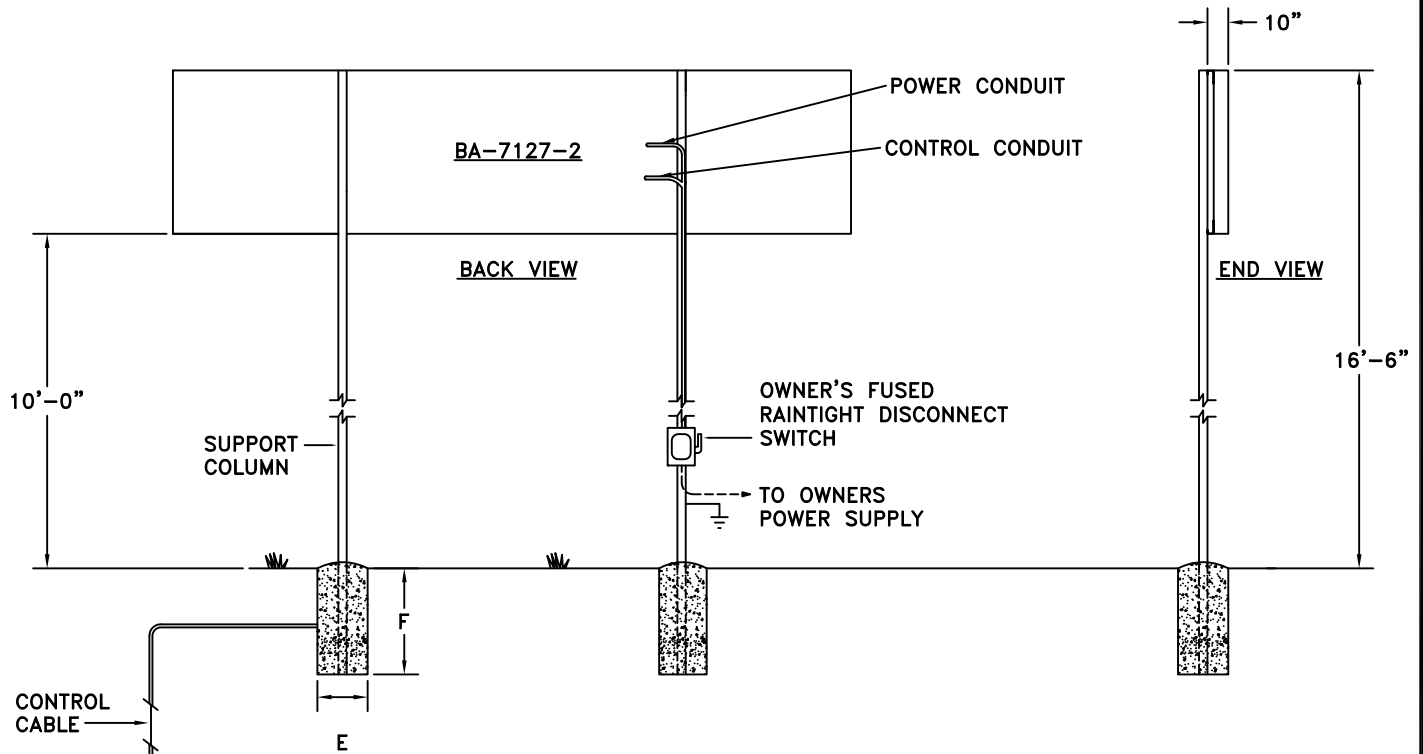


REV.#	CHANGE	DATE	BY
A	GENERAL UPDATES	04-24-09	RMS

121302 BEW



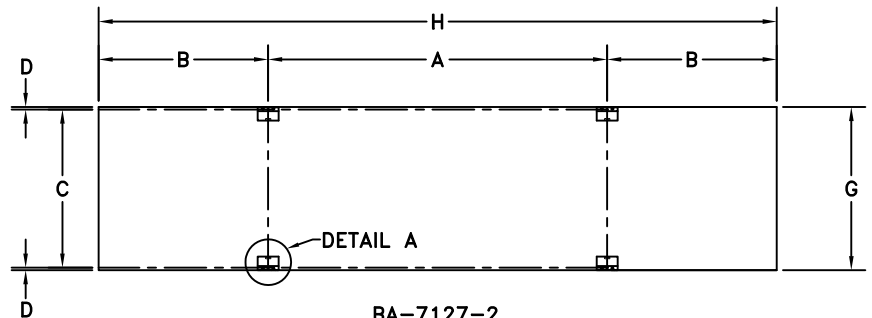
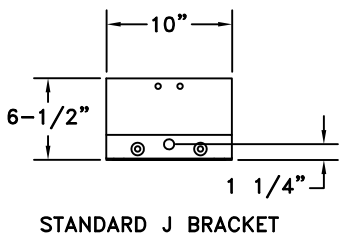
COLUMNS AND FOOTINGS SELECTED FOR LOCATING SCOREBOARD 10'-0" ABOVE GRADE. WIND LOAD-(90 mph). COMPLIES WITH IBC 2006 FOR 90 MPH CLASS B EXPOSURE. SOIL- AVERAGE WITH ALLOWABLE STRESSES OF 2500 psf. DESIGN SHOULD BE ALTERED FOR DIFFERENT SOIL CONDITIONS, CLEARANCE, OR LOCAL CODES. FAIR-PLAY ASSUMES NO RESPONSIBILITIES FOR INSTALLATIONS DONE BY OTHERS.

CONTROL CABLES- SUGGEST 1/2" CONDUIT BE USED FOR BURIED CABLE IN AREAS WHERE IT MAY BE SUBJECT TO MECHANICAL DAMAGE. POWER WIRES SHOULD BE ROUTED IN SEPARATE CONDUIT FROM POWER CABLE.

INSTALLATION DRAWING SHOULD BE REVIEWED BY A LICENSED PROFESSIONAL ENGINEER IN YOUR AREA PRIOR TO CONSTRUCTION.

REF. 01-0500-01 FOR INSTALLATION NOTES.

DETAIL A (3X SCALE)



BA-7127-2
HANGER DETAIL
BACK VIEW

DIMENSIONS BA-7127-2

A	B	C	D	E	F	G	H	COLUMNS	POWER
13'-6"	6'-9"	6'-3 1/2"	1 1/4"	3'-0"	9'-6"	6'-6"	27'-0"	W10 X 26	REFERENCE 01-7127-20-1