

121302 BEW

MP-7114-2

POWER CONDUIT
CONTROL CONDUIT
(#297 PLUG)

BACK VIEW

END VIEW

OWNER'S FUSED RAINTIGHT
DISCONNECT SWITCH

TO OWNER'S
POWER
SUPPLY

10'-0"

21'-5"

10 1/4"

F

E

CONTROL CABLE

CONTROL
RECEPTACLE BOX

DUPLEX
OUTLET

TO 120 VAC
15A SUPPLY

SCBD CONTROL

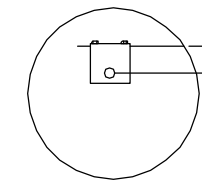
COLUMNS AND FOOTINGS SELECTED FOR LOCATING SCOREBOARD 10'-0" ABOVE GRADE. WIND LOAD- 30 psf (80 mph). SOIL- AVERAGE WITH ALLOWABLE STRESSES OF 2500 psf. DESIGN SHOULD BE ALTERED FOR DIFFERENT SOIL CONDITIONS, CLEARANCE, OR LOCAL CODES. FAIR-PLAY ASSUMES NO RESPONSIBILITIES FOR INSTALLATIONS DONE BY OTHERS.

CONTROL CABLES- SUGGEST 3/4" CONDUIT BE USED FOR BURIED CABLE IN AREAS WHERE IT MAY BE SUBJECT TO MECHANICAL DAMAGE. POWER WIRES SHOULD BE ROUTED IN SEPARATE CONDUIT FROM CONTROL CABLE.

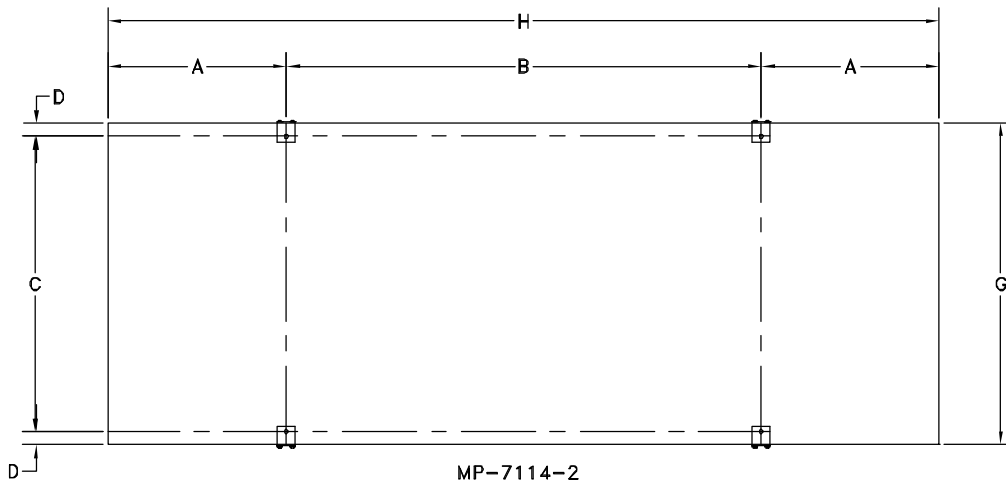
INSTALLATION DRAWING SHOULD BE REVIEWED BY A LICENSED PROFESSIONAL ENGINEER IN YOUR AREA PRIOR TO CONSTRUCTION.

DETAIL A

2 11/16"



"L" BRACKET
1/4" PLATE STEEL



MP-7114-2
HANGER BRACKETS
BACK VIEW

DIMENSIONS MP-7114-2

A	B	C	D	E	F	G	H	COLUMNS	POWER
3'-0"	8'-0"	4'-11 5/8"	2 11/16"	2'-6"	6'-0"	5'-5"	14'-0"	W10 X 15	120 VAC, 1PH 1P-15A